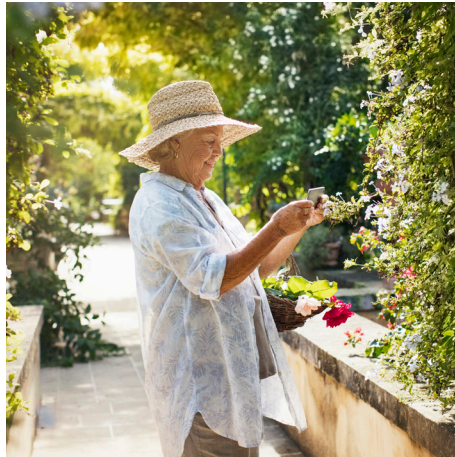




Wound Care Product Guide



Left blank intentionally

Table of Contents

About Mölnlycke®

Mölnlycke 6

Safetac® Technology

Safetac® Technology 7

Pain at dressing changes matters 8

Pain causes stress. Stress delays healing 9

Safetac® technology hurts less 10

The science of Safetac® technology 11

Pain on dressing removal 12

Put a smile on with Safetac® technology 13

Experts on wound care pain management 14-15

Bordered Foam Dressings

Mepilex® Border Flex 17

Mepilex® Border Flex Oval 18

Mepilex® Border 19

Mepilex® Border Surgical Sizes 20

Mepilex® Border Sacrum 21-22

Mepilex® Border Heel 23-24

Mepilex® Border Lite 25

Non-Bordered Foam Dressings

Mepilex® XT 27

Mepilex® 28

Mepilex® Heel 29

Mepilex® Lite 30

Lyof foam® Max 31

Wound Contact Layers

Mepitel® One 33

Mepitel® 34

Mepilex® Transfer 35

Post-Operative Dressings

Mepilex® Border Post-Op with 360° Flex technology 37

Mepilex® Border Post-Op 38

Fibre / Alginate Dressings

Exufiber® 40

Melgisorb® Plus 41

Active Dressings

Mesalt® 43

Antimicrobial Dressings

Mepilex® Border Ag 45

Mepilex® Border Ag Sacrum & Post-op sizes 46

Mepilex® Ag 47

Mepilex® Heel Ag 48

Antimicrobial Dressings	Mepilex® Transfer Ag 49
	Melgisorb® Ag 50
	Exufiber® Ag+ 51
Superabsorbents	Mesorb® 53
	Mextra® 54
Film Dressings	Mepitel® Film 56
	Mepore® Film 57
Island Dressings	Mepore® 59
	Mepore® Pro 60
	Mepore® Film & Pad 61
Bandages	Tubifast® TwoWay Stretch 63
	Tubifast® Garments 64
	Tubigrip® 66
	Tubigrip® Shaped Support Bandage (TSSB) 67
	Tubinette® 68
	Elset® & Elset® 'S' 69
	Setopress® 70
Fixation	Mepitac® 72
	Mefix® 73
Scar Therapy	Mepiform® 75
Skin Therapy	Epaderm® Ointment 77
	Epaderm® Cream 79
Other Dressings	Mepore® IV 82
	Lyof foam® Max T 83
Turning and Positioning Systems	Mölnlycke® Z-Flex® Heel Boot 85
	Mölnlycke® Z-Flex® Fluidized Positioner 86
	Mölnlycke® Tortoise® Turning & Positioning 87
Other Bandages	Collar 'n' Cuff® 89
Application Guides	Mepilex® application guide 91
	Mepilex® Border Lite application guide 92
	Mepilex® Border Flex application guide 93
	Mepilex® Border Sacrum application guide 94
	Mepilex® Border Heel application guide 96
	Mepilex® Border Post-Op application guide 98
	Mepitac® application guide 100
	Tubifast® application guide 101
	Tubigrip® application guide 102
References	References 103-106

Alphabetical Product Index

Collar 'n' Cuff®	89	Mepilex® Transfer Ag	49
Elset® & Elset® 'S'	69	Mepilex® XT	27
Epaderm® Ointment	77	Mepiform®	75
Epaderm® Cream	79	Mepitac®	72
Exufiber®	40	Mepitel®	34
Exufiber® Ag+	51	Mepitel® One	33
Lyof foam® Max	31	Mepore®	59
Lyof foam® Max T	83	Mepore® Pro	60
Mefix®	73	Mepore® Film&Pad	61
Melgisorb® Ag	50	Mepitel® Film	56
Melgisorb® Plus	41	Mepore® Film	57
Mepilex®	28	Mepore® IV	82
Mepilex® Ag	47	Mesalt®	43
Mepilex® Border	19	Mesorb®	53
Mepilex® Border Ag	45	Mextra®	54
Mepilex® Border Ag Sacrum & Post-op sizes	46	Mölnlycke® Z-Flex® Heel Boot	85
Mepilex® Border Flex	17	Mölnlycke® Z-Flex® Fluidized Positioner	86
Mepilex® Border Flex Oval	18	Mölnlycke® Tortoise® Turning & Positioning	87
Mepilex® Border Heel	23-24	Tubifast® TwoWay Stretch	63
Mepilex® Border Lite	25	Tubifast® Garments TwoWay Stretch	64
Mepilex® Border Post-Op	38	Tubigrip®	66
Mepilex® Border Post-Op with 360° Flex technology. ...	37	Tubigrip® Shaped Support Bandage (TSSB)	67
Mepilex® Border Sacrum	21-22	Tubinette®	68
Mepilex® Border Surgical sizes	20	Setopress®	70
Mepilex® Heel	29		
Mepilex® Heel Ag	48		
Mepilex® Lite	30		
Mepilex® Transfer	35		

About Mölnlycke®

Around the world, healthcare systems and professionals are under pressure to deliver better care, to more people, for better value. They need innovative solutions they can trust.

As a world-leading medical solutions company, we are here to advance performance in healthcare. We design and supply medical solutions; solutions that deliver the outcomes healthcare professionals or patients need – and are backed by evidence and health economic data. We are always on the lookout for new ways to improve. We focus on the details that make our solutions more effective, enhance outcomes and offer better value for money.

Who we are

Mölnlycke is a world-leading medical solutions company. Customers use our solutions in over 100 countries – we are the number one global provider of advanced wound care and single-use surgical products, by sales volume, and Europe's largest provider of customised packs. Mölnlycke is a global company with a Swedish heritage. We are owned by the Swedish investment company, Investor AB, and we have nearly 7,900 people employed around the world.

What we do

Our medical solutions advance performance at every point of care – from the hospital to the home:

1. Wound management

We advance wound healing with wound care solutions that are backed by clinical evidence, including dressings with Safetac®. We also provide education and expert support.

2. Preventing pressure injuries

We reduce the risk of pressure injuries, with prevention solutions such as prophylactic dressings, devices that help healthcare professionals turn and re-position patients and supporting educational and consultancy services.

3. Surgical solutions

We improve safety and efficiency in and around the operating theatre with customised packs including surgical instruments. We also protect staff and patients from infection with surgical drapes, staff clothing, antiseptics and surgical gloves and provide education and expert support.

A pioneering history

Mölnlycke was founded in 1849 in Sweden as a textile manufacturer and has a long history of being at the forefront of healthcare. We pioneered the industrial manufacture of wound dressings, and were the first to offer single-use drapes, tubular bandages and polymer-coated powder-free surgical gloves. We are also the company behind Safetac® – the revolutionary soft silicone-based technology used in many of our wound care dressings – that results in less pain for patients. Now we are leading the way in preventing pressure injuries, with prophylactic dressings and devices for turning and re-positioning patients.

Throughout our history, we have retained the name Mölnlycke, reflecting the town of Mölnlycke, which grew up around the company. Our headquarters are now in the city of Gothenburg, only a short distance from our birthplace.

Advancing performance in healthcare


Because we are here to advance performance in healthcare, we go beyond selling products. We help healthcare professionals identify their needs. Then we use our deep expertise to develop solutions that are right for them and improve healthcare outcomes. We expand knowledge about clinical areas with a wealth of specialist training, information, videos, demonstrations and online and offline seminars. We help raise standards of care by collaborating with others to shape healthcare policies and protocols.

Who we support

We support all healthcare professionals – from nurses and doctors through to hospital managers, homecare providers and procurement professionals. We also sell our products directly to patients mainly through pharmacies.

Innovating into the future

Driven by our relentless focus on finding solutions for unmet needs in healthcare, we will continue to innovate and develop high-quality, cost-effective solutions that set new standards. We will work closely with industry bodies, healthcare organisations and governments around the world to shape healthcare policies, protocols, and raise standards of care. From nurses and doctors through to hospital managers, homecare providers and procurement professionals, we will equip everybody in healthcare to achieve the best outcomes.



'It is essential that we cause no harm to the patient and as such we must choose a dressing that can help to prevent pain during application and removal, one that does not damage the peri wound area.'

Dr. Karen Ousey, PhD, RGN
Reader Advancing Clinical Practice
School of Human and Health Sciences
University of Huddersfield
United Kingdom

Proven choice for a better outcome

Safetac*, pioneered by Mölnlycke Health Care, delivers above and beyond the ordinary. Proven to help optimise the wound healing journey and even prevent wounds, dressings with Safetac are the safe choice¹ for patients and a champion for higher standards in wound care. In fact, we have a wealth of evidence that supports the clinical and economic benefits of dressings with Safetac, including Mepilex®, Mepitel®, Mepiform® and Mepitac®. To date, these dressings have helped millions of patients worldwide¹⁻³.

* A unique proprietary technology exclusive to Mölnlycke Health Care

Safetac
TECHNOLOGY

Pain at dressing changes matters

More than 40% of patients in one survey considered pain at dressing changes to be the worst part of living with a wound.¹

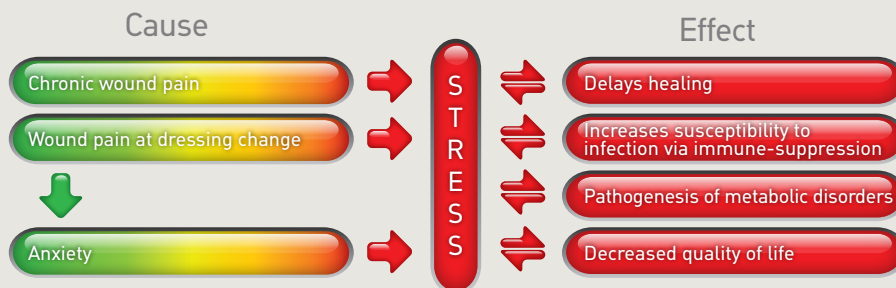
WUWHS – World Union of Wound Healing Societies recommendations

- 1) Assume all wounds are painful²
- 2) Always assess pain²
- 3) Select a dressing that is atraumatic to the wound and surrounding skin²



Pain causes stress. Stress delays healing.

It is now widely recognised that pain and the anticipation of pain is highly stressful for patients³. Studies have also clearly shown that stress can delay wound healing. Patients with higher levels of stress can experience elevated levels of cortisone release and suppressed inflammatory responses, impeding the speed and viability of wound healing³.

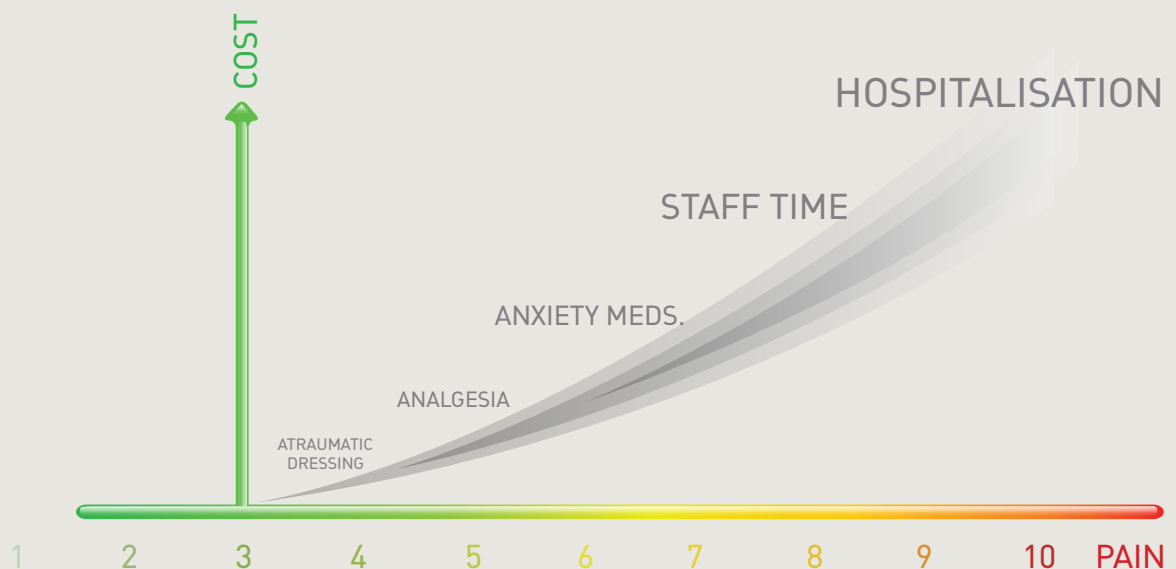


Pain: the most important stress factor you can influence

Assessment and management of wound pain is an opportunity for the clinician to influence stress factors that have been proven to delay healing. Delayed wound healing increases treatment costs and takes more valuable staff time.

The high cost of pain

Both the psychological and physical impacts of pain require added staff time and analgesic, pain or anxiety medication costs that contribute significantly to the overall expense of wound care. This financial burden dwarfs the cost of the dressing itself – implying an opportunity to invest in atraumatic-specialised dressings as a way to minimise the true costs of treatment.



Safetac® technology hurts less

Safetac® is a proprietary adhesive technology that minimises pain to patients and trauma to wounds. Safetac technology is available exclusively on Mölnlycke dressings, including **Mepilex® wound care dressings**, **Mepitel®**, **Mepiform®** and **Mepitac®**.

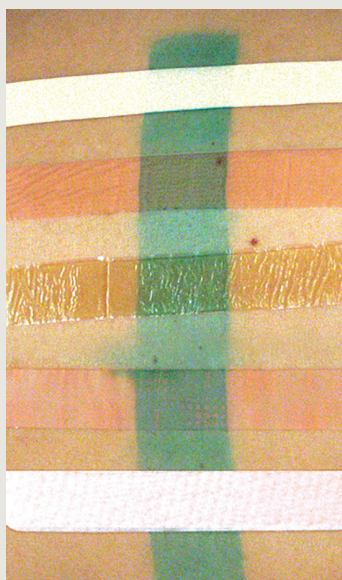
Safetac technology is less painful because it

- 1) adheres gently to dry intact skin, but not to moist wound surfaces⁴
- 2) conforms to the skin's uneven surface thereby covering a larger surface area which spreads peel forces on removal to prevent skin stripping⁵
- 3) seals around wound margins, ensuring exudate does not spread to the surrounding skin thereby minimising maceration⁶

Traditional Adhesive

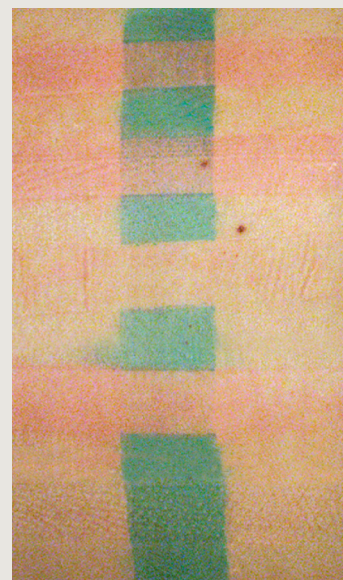


Before removal



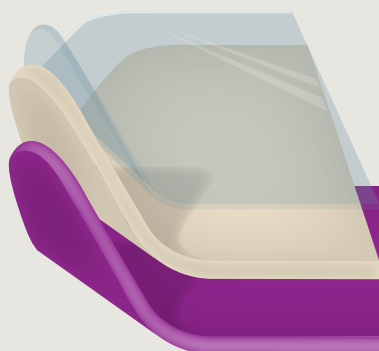
A study compared the effects of a dressing with Safetac technology with four commonly-used adhesive dressings on stripping of epidermal cells. The skin was stained with dye to provide an indicator of the amount of stratum corneum removed by the dressings⁵.

After removal



The amount of dye remaining on the skin at 72 hours was assessed – for the dressing with Safetac technology, the dyed part remained intact. The study proved dressings with Safetac technology are atraumatic and do not cause skin stripping⁵.

Safetac technology



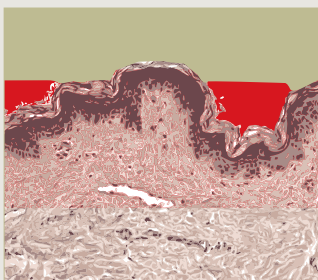
- + Less skin stripping⁵
- + Less wound adherence⁴
- + Less maceration⁶

The science of Safetac[®] technology

Safetac[®] technology conforms to the skin's uneven surface, while other adhesives adhere only to the top of the skin's surface.

This minimises pain at removal, seals the wound margins effectively and helps prevent blister formation.

Adherence



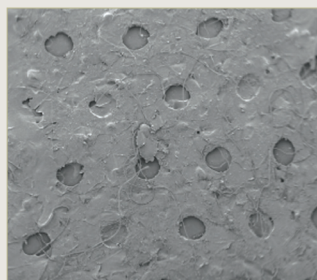
Traditional adhesives only adhere to the top of skin pores, and must stick harder to stay in place.

Sealing



Exudate is able to travel through the dips and valleys between pores, spreading outward and increasing the risk for maceration.

Skin stripping

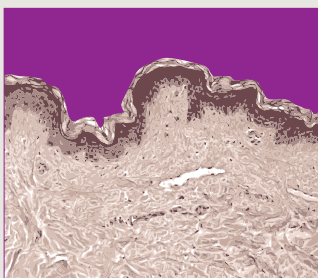


Because of the force needed to stick to the tops of pores and the smaller contact area, sheer forces can strip skin at removal. Electron microscope of acrylate adhesive after dressing removal.

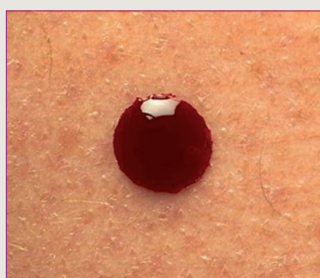
Tissue trauma



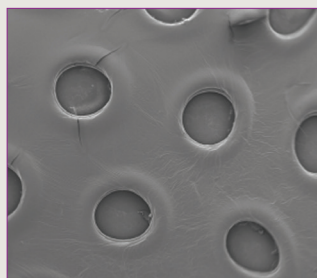
With less skin contact, the adhesive is at risk of slight moves and can lead to the friction that forms blisters.



Safetac conforms to the skin's pores, sealing the wound.



Exudate has nowhere to go, stopping the spread and helping to prevent maceration.



Safetac is in contact with much more skin area, spreading peel forces to avoid skin being stripped at dressing removal. Electron microscope picture of a dressing with Safetac after removal.



More skin contact also eliminates the risk for friction from slighter movement, helping to prevent blistering.

= Less pain to patient and trauma to wound⁷

Safetac[®]
TECHNOLOGY

Pain on dressing removal: Results from a multinational survey

Pain and trauma at dressing removal is a commonly acknowledged issue for patients.

In the study⁷ that has since become the reference for pain management in wound care, 3,034 patients from 20 countries and with a variety of wound types* were interviewed.

Over two visits, each patient was asked:

- 1) the difference in pain between the advanced dressings
- 2) which dressing they preferred

At the same time the caregiver was asked to evaluate wound trauma on removal.

*Wound types:

- 31% pressure injury
- 30% leg ulcer
- 13% skin tear
- 7% diabetic foot ulcer
- 4% burn
- 15% other



Put a smile on with Safetac® technology

Patients prefer dressings with Safetac® technology

The results of the survey showed an overwhelming, statistically significant preference for dressings with Safetac technology. 93% of patients wished to continue with the dressing with Safetac technology. Patients prefer dressings with Safetac technology because they are less painful at dressing removal⁷.

Evaluation of pain

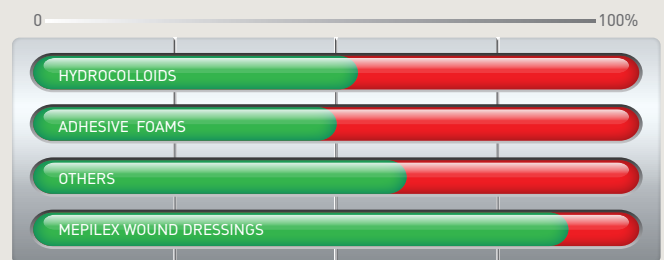


n = 3034 p = 0,01

Pain on removal evaluated by the patient⁷

0 = no pain to 10 = unbearable pain

Evaluation of trauma



Wound trauma on removal evaluated by the care giver⁷

● = no to very slight trauma ● = moderate to high trauma

Minimise pain

- Safetac does not tack to moist surfaces, ensuring the dressing will not stick to the wound on removal
- Safetac technology covers more skin surface, spreading peel forces on removal to prevent skin stripping and blistering

Pain causes stress. Stress delays healing.

Dressings with Safetac help you manage pain at dressing changes, a contributor to the patient stress that delays wound healing⁸.

Minimise trauma

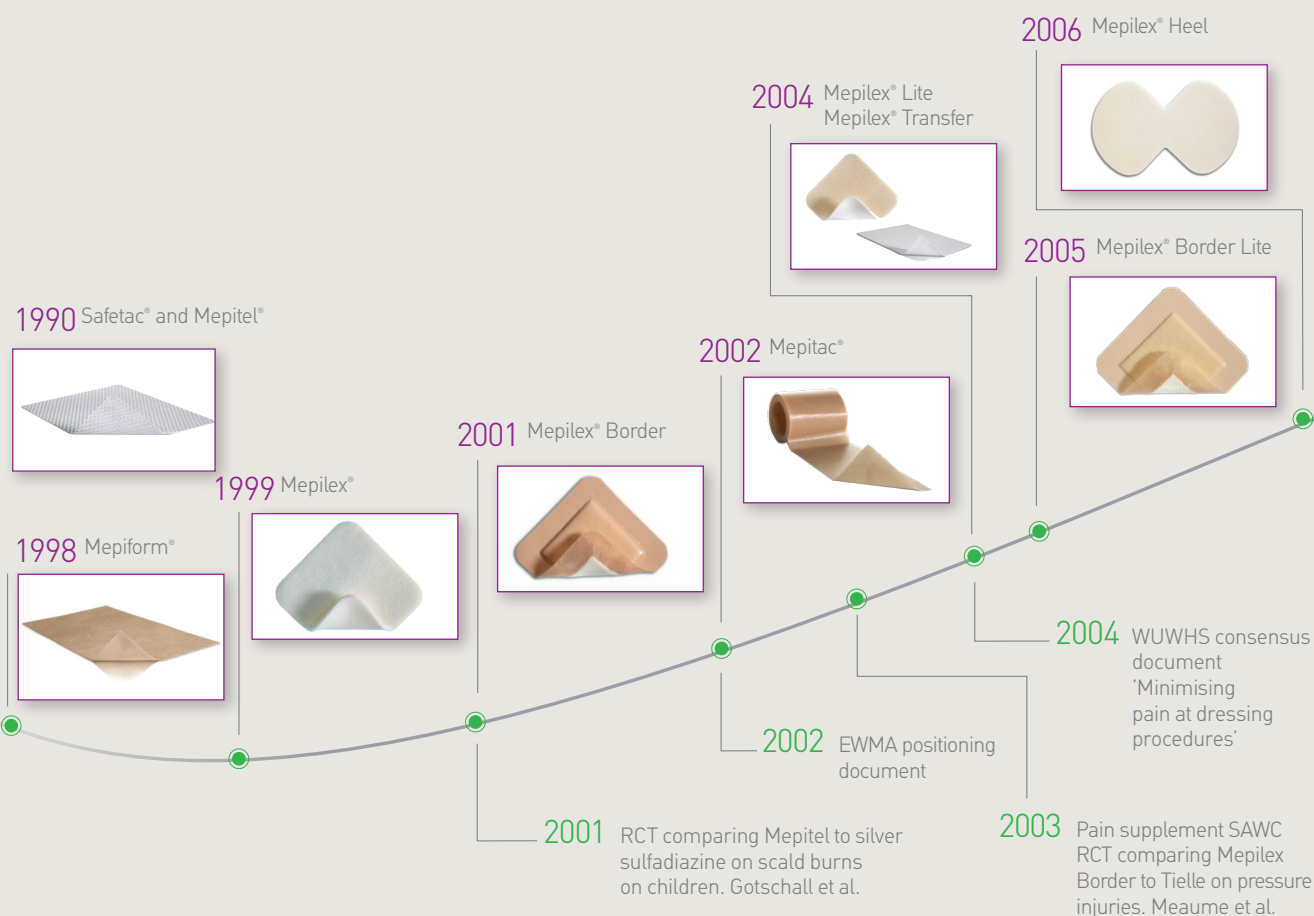
- Safetac technology seals the wound margins, protecting against exudate leaks and maceration
- Seals gently, easily and instantly, but can still be repositioned atraumatically if needed
- Supports optimal moist wound healing conditions

Safetac[®]
TECHNOLOGY

Experts on wound care pain management

Setting the standard for evidence that matters

- Much of the focus of our research, development and product line is dedicated to eradicating unnecessary pain at dressing procedures
- We were the first company to invest in establishing the awareness of pain and trauma at dressing changes as significant considerations to proper healing
- We took a leadership role in establishing the WUWHS consensus documents that guide wound care practice worldwide today
- Mölnlycke has also led the way in the procurement of valid clinical evidence for wound care products
- When we make a claim, we have clinically-relevant proof to back it



2009 Mepitel® One



2007 Mepilex® Border Sacrum
Mepilex® Ag



2007 WUWHS
consensus
document

2008 A multinational survey of the
assessment of pain when
removing dressings.
3,034 patients. White R.

International Pain survey,
2,000 patients. Price P. et al.

2009 WUWHS
consensus
document

2010 RCT comparing Mepilex Ag to silver
sulfadiazine in burns. Silvestein et al.

Randomised trial comparing Mepilex
Lite to standard treatment for
radiotherapy induced skin damage.
Diggelmann et al.

2010 Mepilex® Border Ag



2010 US investigation
comparing Mepilex® Ag
versus Silvadene® in the
treatment of partial
thickness burns.
Silvestein et al.

2011 Mepilex® Border Sacrum Ag



2013 Mepilex® Border Post-Op
Mepilex® Heel Ag



2012 Mepitel® Film



2013 A randomised controlled
trial of the effectiveness
of soft silicone foam
multi-layer dressings
in the prevention of
sacral and heel pressure
ulcers in trauma and
critically ill patients.
Santamaria N. et al.

The cost-benefit of using
soft silicone multilayered
foam dressings to prevent
sacral and heel pressure
ulcers in trauma and
critically ill patients: a
within-trial analysis of the
Border Trial.
Santamaria N. et al.

2017 Mepilex® Border Post-Op
Mepilex® Border Flex



2014 Mepilex® Border Heel
Mepilex® Border Flex Oval



2017



Combined Prevention
Mepilex® Border Sacrum
Mepilex® Border Heel
Mölnlycke® Z-Flex™
Heel Boot
Mölnlycke® Z-Flo™
Fluidized Positioner
Mölnlycke® Tortoise®
Turning&Positioning
System

A randomised control
trial of the clinical
effectiveness of multi-
layer silicone foam
dressings for the
prevention of pressure
injuries in high-risk
aged care residents:
The Border III Trial
Santamaria N. et al.

Bordered Foam Dressings

Mepilex® Border Flex
Mepilex® Border Flex Oval
Mepilex® Border
Mepilex® Border Sacrum
Mepilex® Border Heel
Mepilex® Border Lite

Mepilex® Border Flex

Five-layer foam dressing with a unique combination of Flex Technology and Safetac

Highly-breathable backing film

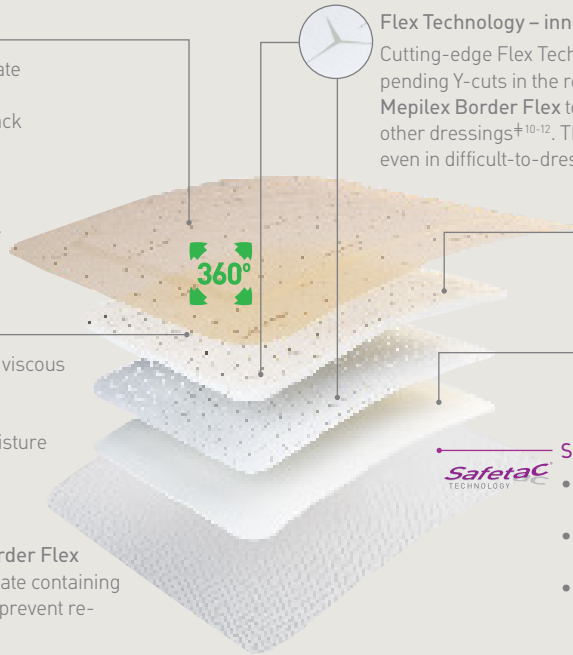
- High moisture vapour transmission rate for longer wear time¹.
- Exudate Progress Monitor lets you track and record exudate progress².
- The backing film allows you to check colour and consistency of exudate.
- Works as a barrier against bacteria³⁻⁶.
- Water resistant so your patients can shower⁷.

Retention layer

- Effectively manages both normal and viscous exudate¹⁻⁸.
- Traps exudate containing bacteria⁹.
- Contributes to the dressing's high moisture vapour transmission rate⁸.

Bacteria trapping

The 5-layer construction of Mepilex Border Flex works to absorb, channel and trap exudate containing bacteria away from the wound bed and prevent re-entry, even under compression⁹.



Flex Technology – innovation that matters

Cutting-edge Flex Technology enables 360° stretch, thanks to patent-pending Y-cuts in the retention and spreading layers. So you can trust Mepilex Border Flex to stay where needed – and for longer, compared to other dressings^{†10-12}. The advanced 5-layer design conforms to the body – even in difficult-to-dress locations – adapting to everyday movements.

† On knees and elbows compared to other square dressings

Spreading layer

- Distributes fluid over a wide surface area to maximise fluid transport to the retention layer and backing film¹³.

Foam layer

- Absorbs fluid and transports it to the spreading layer¹.

Safetac® wound contact layer



- Less painful dressing changes¹⁴ and reduced risk of maceration^{15,16}.
- It's easy to handle – and you can remove the dressing without damaging the skin^{15,16}.
- Safetac also protects new tissue – so wounds remain undisturbed to support natural healing¹⁵⁻¹⁷.



How Mepilex Border Flex works

Mepilex Border Flex with proprietary Flex Technology is proven to be more flexible than comparable bordered foam dressings¹⁸. It adapts to body movements and is comfortable to wear^{11,12}. Safetac technology in the wound contact layer works together with Flex Technology to allow the dressing to stay on longer than non-flexible dressings^{†10,12}, while still reducing pain and trauma^{15,16}, so your patients can get on with life during treatment^{11,12}.

The dressing's longer wear time could also benefit your healthcare facility by reducing dressing-related costs as well as waste.

† On knees and elbows compared to other square dressings

Benefits of Mepilex Border

- Flex Technology provides excellent flexibility¹⁸ and conformability to avoid early detachment¹⁰
- Proven to handle more fluid, than other all-in-one foam dressings¹
- Exudate Progress Monitor lets you track and record fluid², potentially avoiding excess dressing changes
- For use on a wide range of exuding chronic and acute wounds¹⁹

Mepilex Border Flex is proven to have better fluid handling capacity than comparable dressings¹. And it can handle both normal and viscous fluid¹⁸. Our design also achieves a high moisture vapour transmission rate (MVTR)¹. It does all this to deliver a longer wear time^{11,12} and to put you in complete control of exudate management.

Areas of use

You can use Mepilex Border Flex to treat a wide range of exuding chronic and acute wounds¹⁹, such as diabetic foot ulcers, venous leg ulcers, pressure injuries*, skin tears and traumatic wounds. The conformable design maintains a moist wound environment^{15,16}. Available in five sizes in both square and rectangular shapes, it can be used on a wide range of wounds and can be considered your 'go to' all-in-one dressing.

* Where a repositioning or off-loading protocol is used

Note

In case of clinical signs of infection, the use of Mepilex Border Flex may be continued if proper infection treatment is initiated.

Mepilex Border Flex ordering information†

Product Code	Size	Pcs/box
595211	7.5 x 7.5 cm	10
595311	10 x 10 cm	10
595011	12.5 x 12.5 cm	10
595411	15 x 15 cm	10
595611	15 x 20 cm	10

† Packaged sterile in single packs.

Mepilex® Border Flex Oval

Absorbent self-adhesive foam dressing

Highly breathable backing film

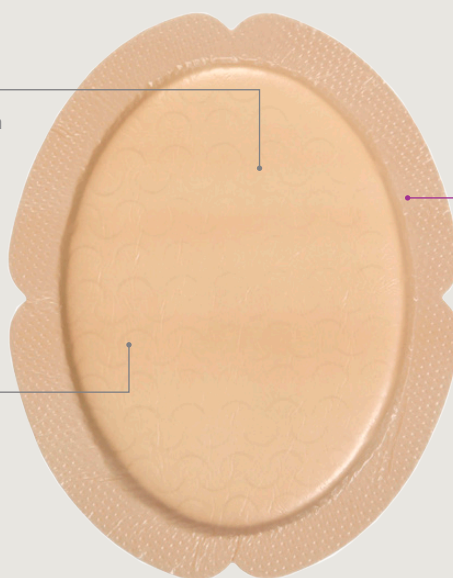
- Engineered border to strengthen adhesion on moveable areas of the body
- Shower-proof^{1,2,3}, bacteria and viral barrier^{4,5,6,†}

† Microbes larger than 25 nm

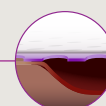


Flex Technology

- Flex cuts to enhance flexibility and conformability⁷



Safetac
TECHNOLOGY



Safetac® wound contact layer

- Less pain during dressing changes⁸
- Does not stick to the wound, for less disturbance⁹
- Seals wound margins to avoid maceration¹⁰



How Mepilex Border Flex Oval works

Mepilex Border Flex Oval is an all-in-one, oval foam dressing that effectively absorbs and retains exudate¹¹ while maintaining a moist wound environment. To minimise rolling and increase conformability, the shape of the border is designed to adapt to body contours. The highly absorbent retention pad of Mepilex Border Flex Oval features Flex Technology. These patterned perforations allow for greater extensibility and flexibility.

The Safetac technology layer seals the wound edges and prevents exudate leakage onto the surrounding skin, thus minimising the risk of maceration¹⁰. The Safetac technology layer also allows the dressing to be changed without causing additional pain to the patient or trauma to the wound and surrounding skin^{8,12}.

Benefits of Mepilex Border Flex Oval

- Highly conformable⁷ to adapt to challenging body contours and better ability to stay in place
- Designed for an enhanced ability to stay in place – to reduce unnecessary dressing changes and contribute to cost-efficient care
- Minimises pain and trauma at dressing changes for optimised healing¹⁰
- Does not adhere to moist wounds
- Adheres gently and securely to dry, intact surrounding skin
- Maintains a moist wound environment
- Minimises the risk of maceration¹⁰
- Promotes patient comfort during wear, and is shower-proof, for a better quality of life for patients
- Can remain in place for several days depending on the condition of the wound

Areas of use

You can use Mepilex Border Flex to treat a wide range of exuding chronic and acute wounds such as:

- Treatment of moderate to highly exuding wounds
- Aid in the prevention of skin damage
- Leg and foot ulcers
- Traumatic wounds
- Aid in the prevention of pressure injuries*

* As part of an overall prevention protocol

Mepilex Border Flex Oval ordering information†

Product Code	Size	Pcs/box
283570	7.8 x 10 cm	5
283300	13 x 16 cm	5
283400	15 x 19 cm	5

† Packaged sterile in single packs.

Mepilex® Border

The self-adherent bordered foam dressing

Multi-layered absorbent foam pad

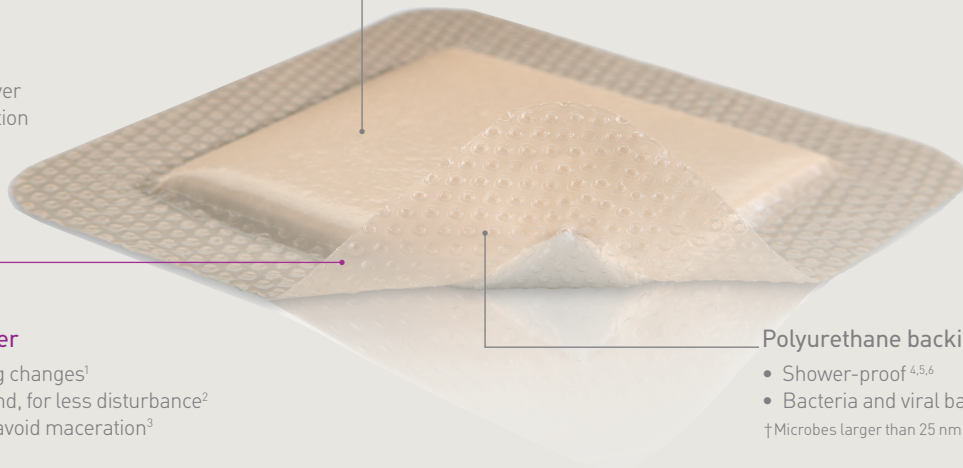
- Polyurethane foam for quick exudate absorption
- Fibre layer for maximum retention
- Non-woven spreading layer for optimising the absorption capacity and leakage prevention



Safetac®
TECHNOLOGY

Safetac® technology layer

- Less pain during dressing changes¹
- Does not stick to the wound, for less disturbance²
- Seals wound margins to avoid maceration³



Polyurethane backing film

- Shower-proof^{4,5,6}
- Bacteria and viral barrier^{7,8,9,†}

† Microbes larger than 25 nm



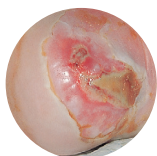
How Mepilex Border works

Mepilex Border has excellent fluid handling properties because of the following:

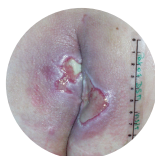
- Safetac technology layer – seals around wound/incision margins
- Absorption layer – ensures quick and effective absorption
- Spreading layer – spreads the exudate into the retention layer
- Retention layer – impedes exudate from being pushed back into the skin; reduces the risk of maceration³
- Backing film – highly breathable; shower- and bacteria-proof to protect the wound from outer contamination

Benefits of Mepilex Border

- Atraumatic to the wound and surrounding skin on removal²
- Does not adhere to a moist wound
- Adheres gently and securely to dry, intact skin
- Maintains a moist wound environment¹⁰
- Minimises the risk of maceration³
- Designed for ease of use and patient comfort
- Barrier to outside moisture, viruses and bacteria



Foot ulcer



Pressure injury

Areas of use

You can use Mepilex Border to treat a wide range of exuding chronic and acute wounds such as:

- Pressure injuries
- Leg and foot ulcers
- Traumatic wounds (e.g. skin tears and wounds healing by secondary intention)
- Aid in the prevention of skin damage
- Incision care

Mepilex Border ordering information†

Product Code	Size	Pcs/box
295200	7.5 x 7.5 cm	5
295300	10 x 10 cm	5
295400	15 x 15 cm	5
295600	15 x 20 cm	5

† Packaged sterile in single packs.

Unique 5-Layer construction

5th layer:

Backing film provides shower^{1,2,3}, viral and bacteria barrier^{4,5,6}, and it has high permeability to allow effective moisture vapour transfer[†].

†Microbes larger than 25 nm

4th layer:

The highly absorbent retention layer stores exudate.

3rd layer:

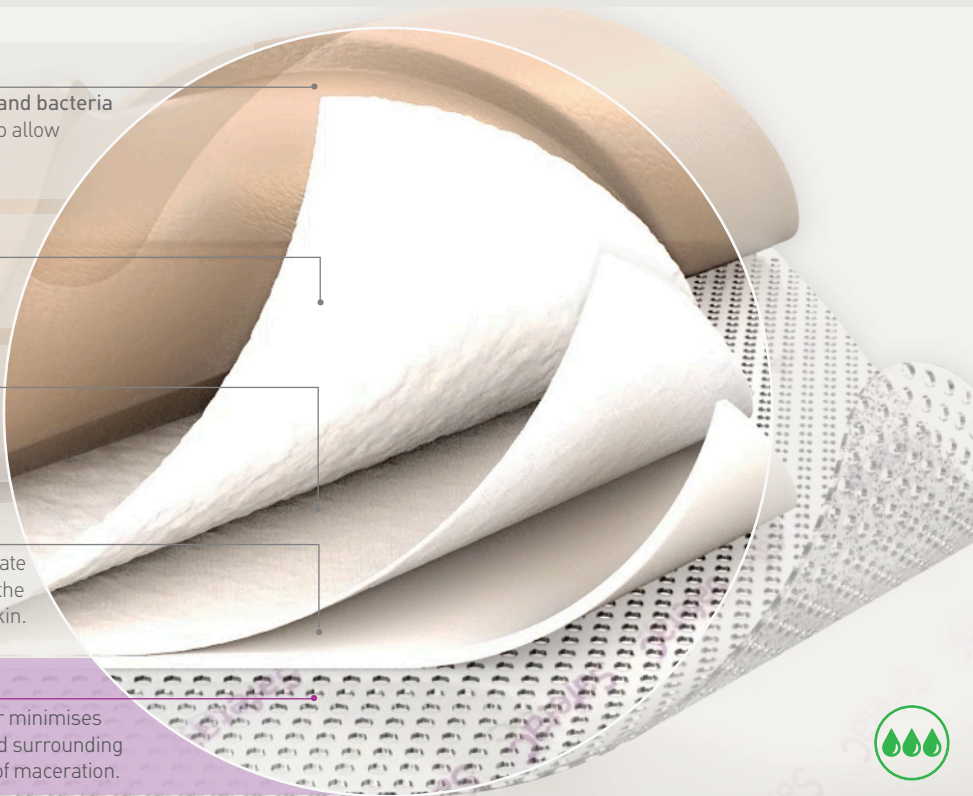
The spreading layer distributes exudate evenly to maximise the full surface area of the retention layer above it.

2nd layer:

Absorption layer attracts moisture/exudate rapidly and prevents it from returning to the wound while protecting the periwound skin.

1st layer:

Safetac[®] technology wound contact layer minimises patient pain and trauma to the wound and surrounding skin on removal while reducing the risk of maceration.



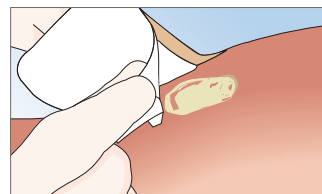
Mepilex[®] Border surgical sizes



Mepilex Border surgical sizes application



Clean the wound area. Skin barrier products not necessary. Remove the release film.



Apply the adherent side to the wound. Do not stretch.

Mepilex Border surgical sizes ordering information[‡]

Product Code	Size	Pcs/box
295800	10 x 20 cm	5
295850	10 x 25 cm	5
295900	10 x 30 cm	5

[‡]Packaged sterile in single packs.



Hip incision



Knee incision



Chest incision

Mepilex® Border Sacrum

Self-adherent bordered foam sacral dressing

Multi-layered absorbent foam pad

- Polyurethane foam for quick exudate absorption
- Fibre layer for maximum retention
- Absorbs exudate
- Non-woven spreading layer for optimising the absorption capacity and leakage prevention

Polyurethane backing film

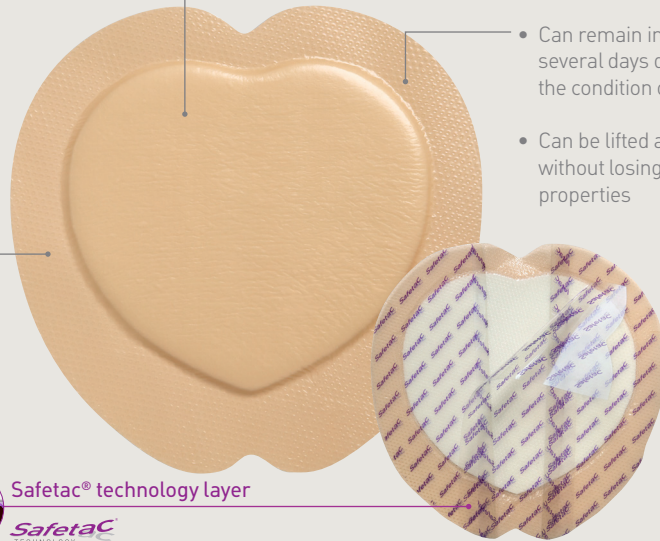
- Breathable
 - Shower-proof^{1,2,3}, bacteria and viral barrier^{4,5,6,†}
- † Microbes larger than 25 nm

Areas of use

Mepilex Border Sacrum is specifically designed to address sacral wounds caused from pressure, friction or shear.

Mepilex Border Sacrum has been proven to aid in the prevention of pressure injuries*.

* When used as part of an individualised, comprehensive pressure injury prevention protocol.



- Can remain in place for several days depending on the condition of the wound.
- Can be lifted and adjusted without losing its adherent properties



SafetaC® technology layer

SafetaC TECHNOLOGY



Understand the problem

Hospital-acquired pressure injuries (HAPI) occur most commonly in the ICU (12% up to 42%)⁷, with the rate of intraoperatively acquired HAPI ranging from 12% up to 66% in surgical patients. These pressure injuries are caused by intense, prolonged and unrelieved pressure, resulting in damage to skin and underlying tissue⁸. The sacrum is generally reported as the most common location for pressure injuries, with an incidence rate in acute care settings of 31%⁹.

Pressure injuries (PI) are largely preventable and can be viewed as an adverse outcome of a healthcare admission, yet they affect millions of people and consume billions of dollars in healthcare spending¹⁰.

Pressure injury treatment costs in Australia are estimated to be \$983 million per annum¹⁰.

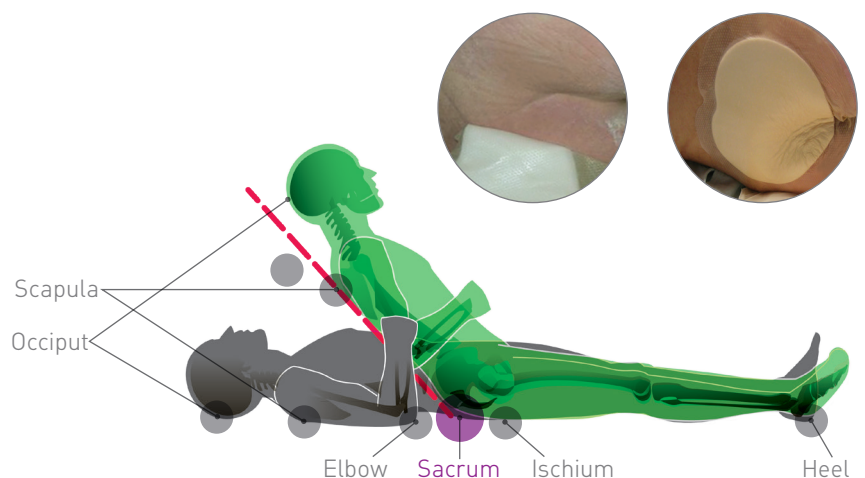
On average, pressure injuries (for a Stage II and Stage III) cost approx \$14,000 per occurrence in Australia. The average cost for managing a Stage IV pressure injury in Australia is over \$22,400¹⁰.

Adding a dressing to your prevention programme may help you to reduce your hospital-acquired pressure injury costs by helping them stop before they start.

Mepilex Border Sacrum ordering information†

Product Code	Size	Pcs/box
282000	18 x 18 cm	5
282400	23 x 23 cm	5

† Packaged sterile in single packs.



Mepilex® Border Sacrum

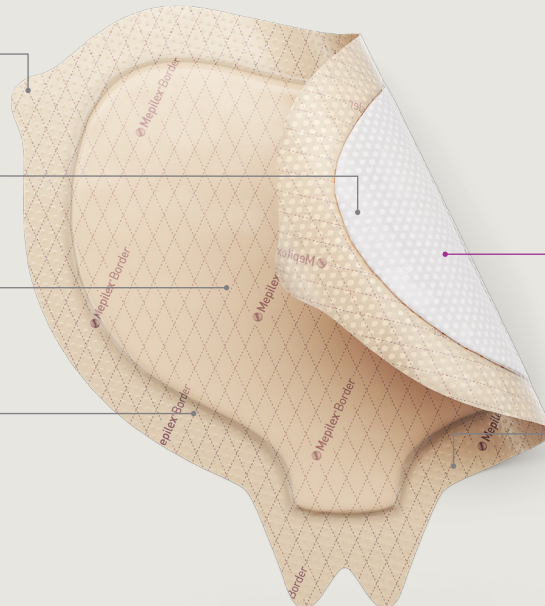
All-in-one sacral shaped absorbent foam dressing

Visual handling tabs provide the user information on dressing 'hold' position

Same unique and protective five-layer design

Optimised gluteal seal for enhanced protection of high-risk sacral areas¹

Enhanced, thicker dressing borders allowing efficient handling¹



Safetac® technology layer

Safetac
TECHNOLOGY



Optimisation of dressing shape for enhanced coverage of high risk areas¹

Mepilex Border Sacrum for prevention

Mepilex Border Sacrum has been demonstrated to help prevent pressure injuries, redistribute shear and friction on tissues, and maintain optimal skin microclimate during wear time²⁻⁴.

Sacral Pressure Injury Prevention Considerations:

- Assess patient for pressure injury risk.
- If patient is at risk, apply **Mepilex Border Sacrum**.
- Inspect skin under dressing daily or per facility protocol by carefully lifting the border edge and repositioning following inspection.
- Change dressing per facility protocol (dressing should be changed if rolled, soiled, saturated, displaced or compromised).

Mepilex Border Sacrum for treatment

Mepilex Border Sacrum is designed for a wide range of exuding wounds such as sacral pressure injuries. May also be used on dry/necrotic wounds in combination with gels.

Patients with faecal incontinence:

- Consult with physician; consider placement of faecal containment or management device.
- Consider applying strip paste to adherent side of dressing where the foam and border meet and where dressing comes closest to anus.
- After dressing is securely in position, apply liquid skin barrier to outside of Safetac technology border and onto intact skin.

Mepilex Border Sacrum ordering information[‡]

Product Code	Size	Pcs/box
282050	16 x 20 cm	5
282450	22 x 25 cm	5

[‡] Packaged sterile in single packs.

Mepilex® Border Heel

All-in-one heel shaped absorbent foam dressing

Shaped foam pad designed to help prevent and manage wound areas on both the back and underneath of the heel

Border is designed to be folded with limited overlay

Shaped to fit the heel – easy to apply and reposition

Safetac® technology layer

Safetac
TECHNOLOGY

Specially engineered border with flaps to enhance adhesion and conform to contours



How Mepilex Border Heel works

Mepilex Border Heel is an all-in-one foam dressing shaped to fit the heel. When used for **prevention** it will aid in protecting the skin from damage caused by pressure, shear and friction.¹ The **Safetac** technology layer protects the skin by maintaining optimal positioning and by limiting friction and shear at the patient-dressing interface.¹ The **Safetac** technology layer allows for repositioning of the dressing after skin inspection.

Mepilex Border Heel when used for **treatment**, effectively absorbs and retains exudate² and maintains a moist wound environment. The **Safetac** technology layer seals the wound edges, prevents exudate leakage onto the surrounding skin, thus minimising the risk of maceration³. The **Safetac** technology layer allows the dressing to be changed without damaging the wound or surrounding skin⁴, or exposing the patient to additional pain⁵.

Benefits of Mepilex Border Heel

- Self-adherent – no secondary fixation needed for quicker and easier care
- Shaped to fit heels – no need to cut or adapt for quicker, cost-efficient care
- Minimises pain and trauma at dressing changes^{4,5}
- Minimises maceration, and effectively manages exudate for optimised wound healing environment^{2,3}
- Designed to promote patient comfort during wear, and is shower-proof, for a better quality of life of patients⁴⁻⁸
- Can remain in place for several days depending on the condition of the wound
- Can be adjusted without losing its adherent properties

Areas of use

Mepilex Border Heel is designed to be applied to the heel for the prevention of skin damage or for treatment of exuding wounds including pressure injuries, diabetic foot ulcers, heel injuries, traumatic wounds, and other wounds healing by secondary intention.

Mepilex Border Heel ordering information†

Product Code	Size	Pcs/box
283250	18.5 x 24 cm	5

† Packaged sterile in single packs.

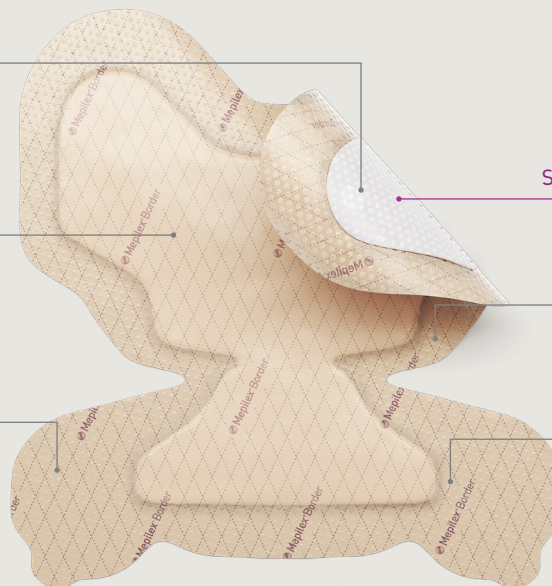
Mepilex® Border Heel

All-in-one heel shaped absorbent foam dressing

Optimisation of dressing shape for enhanced coverage of high risk areas¹

Medial and lateral malleolus coverage providing enhanced protection¹

Enhanced, thicker dressing borders allowing efficient handling¹



Safetac® technology layer

Safetac
TECHNOLOGY

Same unique and protective five-layer design

Visual handling tabs provide the user information on dressing 'hold' position

Mepilex Border Heel for prevention

Mepilex Border Heel is an all-in-one foam dressing shaped to fit the heel and protect the areas around the heel, Achilles and bilateral malleoli. When used for prevention* it will aid in protecting the skin from damage caused by pressure, shear and friction². The Safetac technology layer protects the skin by maintaining optimal positioning and by limiting friction and shear at the patient-dressing interface². The Safetac technology layer allows for repositioning of the dressing after skin inspection.

* When used as a part of an overall prevention protocol.

Mepilex Border Heel for treatment

Mepilex Border Heel, when used for treatment, effectively absorbs and retains exudate³ and maintains a moist wound environment. The Safetac technology layer seals the wound edges, prevents exudate leakage onto the surrounding skin, thus minimising the risk of maceration⁴. The Safetac technology layer allows the dressing to be changed without damaging the wound or surrounding skin³, or exposing the patient to additional pain⁵.

Benefits of Mepilex Border Heel

- Handling tabs for easier skin checks
- Slightly thicker border for better handling and stay-on-ability
- Self-adherent – no secondary fixation needed
- Shaped to fit heels – no need to cut or adapt
- Minimises pain and trauma at dressing changes^{3,5,6}
- Medial and lateral malleolus coverage to provide maximum protection
- Can remain in place for several days
- Can be adjusted without losing its adherent properties

Areas of use

Mepilex Border Heel is designed to be applied on the heel for the prevention of skin damage or during treatment of exuding wounds including pressure injuries, diabetic foot ulcers, heel ulcers, traumatic wounds and other wounds healing by secondary intention.

Mepilex Border Heel ordering information†

Product Code	Size	Pcs/box
282750	22 x 23 cm	6

† Packaged sterile in single packs.

Mepilex® Border Lite

The self-adherent thin bordered foam dressing

Polyurethane backing film

- Shower-proof^{1,2,3}
 - Bacteria and viral barrier^{4,5,6,†}
- † Microbes larger than 25 nm

Two-layer pad

- Hydrophilic polyurethane foam to quickly absorb exudate
- Non-woven spreading layer to optimise the absorption capacity and prevent leakage.



Safetac® wound contact layer

- Less pain during dressing changes⁷
- Does not stick to the wound, for less disturbance⁸
- Seals wound margins to avoid maceration⁹



How Mepilex Border Lite works

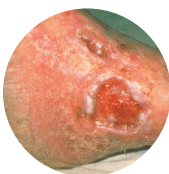
Mepilex Border Lite is a thin and conformable version of Mepilex Border; ideal for body contours and hard-to-dress areas and is available in smaller sizes. It is a self-adherent dressing that absorbs exudate, maintains a moist wound environment and minimises the risk of peri-wound maceration. The Safetac technology layer allows the dressing to be changed without causing additional pain to the patient or trauma to the wound and surrounding skin^{7,8,10}.

Benefits of Mepilex Border Lite

- Minimises trauma to the wound and pain to the patient during dressing changes^{7,8,10}
- Excellent fit to the wound and body contours
- A thin and conformable all-in-one dressing
- Barrier to outside moisture, viruses and bacteria
- Minimises the risk of maceration
- Does not adhere to moist wound
- Adheres gently and securely to dry, intact surrounding skin



Granulating wound



Leg ulcer



Primary wound protection

Areas of use

You can use Mepilex Border Lite to treat a wide range of exuding wounds such as:

- Non to low exuding wounds
- Leg and foot ulcers
- Pressure injuries
- Traumatic wounds (e.g. abrasions, finger injuries, blisters, and skin tears)
- Protection of compromised and/or fragile skin

Mepilex Border Lite ordering information†

Product Code	Size	Pcs/box
281000	4 x 5 cm	10
281100	5 x 12.5 cm	5
281200	7.5 x 7.5 cm	5
281300	10 x 10 cm	5
281500	15 x 15 cm	5

† Packaged sterile in single packs.

Non-Bordered Foam Dressings

Mepilex® XT
Mepilex®
Mepilex® Heel
Mepilex® Lite
Lyof foam® Max

Mepilex® XT

Absorbent foam dressing with exudate channels

Polyurethane foam pad

- Enhanced exudate management capability
- Conformable and flexible foam

Breathable polyurethane backing film

- Shower-proof[†]
 - Barrier to virus and bacteria^{2,3,†}
- †Microbes larger than 25 nm



Safetac® technology layer

- Less pain during dressing changes⁴
- Does not stick to the wound, for less disturbance⁵
- Seals wound margins to avoid maceration⁶



Handles both low and high viscosity fluid^{7,8}

Ultra-absorbent foam with integrated channels absorbs exudate, drawing it away from the wound bed, then spreading and absorbing it across the foam pad.



How Mepilex XT works

Mepilex XT is a soft and conformable⁹ foam dressing with integrated channels, designed to transfer exudate rapidly⁸ into the absorbent foam pad. Safetac technology seals the wound edges, preventing exudate from leaking onto the surrounding skin, thus minimising the risk of maceration. Safetac also ensures that the dressing can be changed with minimised risk of damaging the wound or surrounding skin or exposing the patient to additional pain^{10,11}.

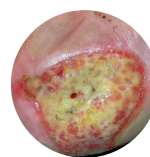
Benefits of Mepilex XT

- Minimises maceration, absorbs both low and high viscosity exudate^{7,8}
- Can be used in all exuding wound healing stages
- Minimises pain and trauma at dressing changes^{4,5}
- Promotes patient comfort
- Well-suited for use under compression bandages^{7,8}
- Can remain in place for several days depending on the condition of the wound^{9,12}
- Can be cut to suit various wound shapes and difficult-to-dress locations
- Stays in place allowing for "hands-free" application of compression or retention bandages⁸
- Can be lifted and adjusted without losing its adherent properties
- Non-sensitising¹³

Areas of use

You can use Mepilex XT to treat a wide range of exuding wounds such as:

- Exuding acute and chronic wounds in all healing stages
- Leg and foot ulcers
- Pressure injuries
- Traumatic wounds



Pressure injury



Foot ulcer

Mepilex XT ordering information[‡]

Product Code	Size	Pcs/box
211015	5 x 5 cm	5
211100	10 x 10 cm	5
211200	10 x 20 cm	5
211300	15 x 15 cm	5
211400	20 x 20 cm	5
211500	20 x 50 cm	2

[‡]Packaged sterile in single packs.

Mepilex®

Effective absorbent foam dressing

Polyurethane foam pad

- Absorbs exudate
- Conformable
- May be used under compression

Polyurethane backing film

- Breathable
- Shower-proof[†]
- Bacteria and viral barrier^{2,3,†}

[†]Microbes larger than 25 nm



Safetac®
TECHNOLOGY



Safetac® wound contact layer

- Less pain during dressing changes⁴
- Does not stick to the wound, for less disturbance⁵
- Seals wound margins to avoid maceration⁶



How Mepilex works

Mepilex is a soft and highly conformable foam dressing that absorbs exudate and maintains a moist wound environment.

The Safetac technology layer seals the wound edges, preventing the exudate from leaking onto the surrounding skin, thus minimising the risk of maceration. The Safetac technology layer ensures that the dressing can be changed without damaging the wound or surrounding skin or exposing the patient to additional pain.

Benefits of Mepilex

- Minimises pain and trauma at dressing changes^{1,4,5}
- Stays in place allowing easy application of compression or retention bandages
- Well-suited for use under compression bandages
- May be cut to suit various wound shapes and difficult-to-dress locations
- Promotes patient comfort during wear
- May remain in place for several days depending on the condition of the wound
- May be adjusted without losing its adherent properties
- Low potential for skin irritation and allergy

Areas of use

You can use Mepilex to treat a wide range of exuding wounds such as:

- Moderately exuding wounds
- Leg and foot ulcers
- Pressure injuries
- Under compression
- Graft and donor sites
- Traumatic wounds (e.g. skin tears and wounds healing by secondary intention)

Mepilex ordering information[†]

Product Code	Size	Pcs/box
294015	5 x 5 cm	5
294100	10 x 10 cm	5
294200	10 x 20 cm	5
294300	15 x 15 cm	5
294400	20 x 20 cm	5
294500	20 x 50 cm	2

[†] Packaged sterile in single packs.

Mepilex® Heel

Effective absorbent heel shaped foam dressing



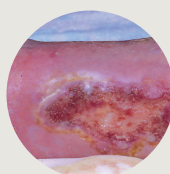
Mepilex Heel is a shaped foam dressing, designed for heels and typically used on pressure injuries.

Mepilex Heel minimises pain and wound or skin damage at dressing change^{4,5}. Mepilex Heel is soft and conformable and will easily and comfortably fit the heel.

Mepilex Heel ordering information[†]

Product Code	Size	Pcs/box
288100	13 x 20 cm	5

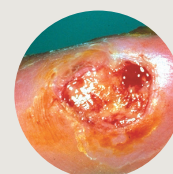
[†] Packaged sterile in single packs.



Leg ulcers



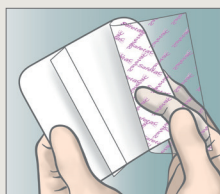
Pressure injuries



Diabetic foot ulcer



Mepilex application



Clean the wound area. Can be cut for customisation, if desired. Remove the larger release film.

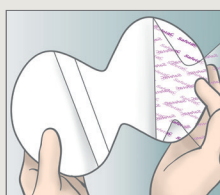


Mepilex should overlap the wound bed by at least 2 cm onto the surrounding skin. Apply the adherent side to the wound. Remove the shorter release film and mold the dressing in place. Do not stretch.

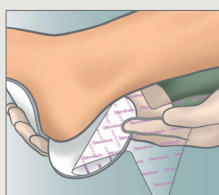


Hold Mepilex securely in place with a light bandage or other dressing retention method (e.g. Tubigrip®, Tubifast®)

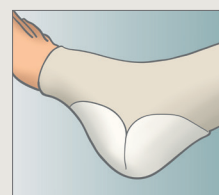
Mepilex Heel application



Clean the wound area. Cut for customisation, if desired. Remove the larger release film.



Fix the dressing under the foot. Remove the shorter release film. Mould the dressing around the heel and bring edges together. Mepilex Heel should overlap the wound bed by at least 2 cm onto the surrounding skin.



Hold Mepilex Heel securely in place with a light bandage or other dressing retention method (e.g. Tubigrip®, Tubifast®)

Mepilex® Lite

Absorbent thin foam dressing

Thin foam pad

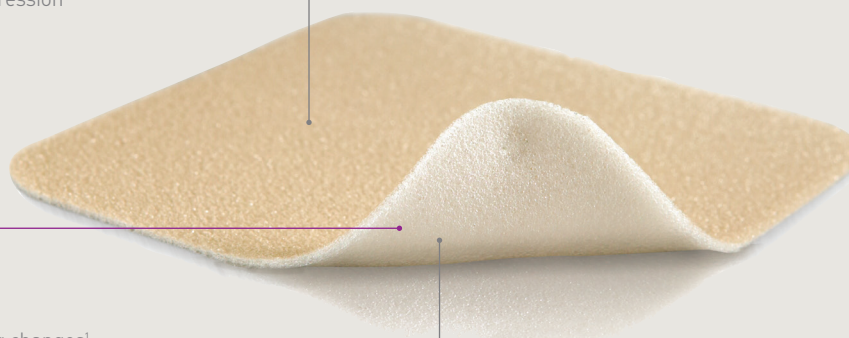
- Absorbs exudate
- May be used under compression
- Conformable



Safetac®
TECHNOLOGY

Safetac® technology layer

- Less pain during dressing changes¹
- Does not stick to the wound, for less disturbance²
- Seals wound margins to avoid maceration³



Polyurethane backing film

- Shower-proof^{4,5}
 - Bacteria and viral barrier^{4,6,7,†}
- † Microbes larger than 25 nm

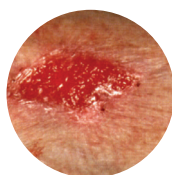


How Mepilex Lite works

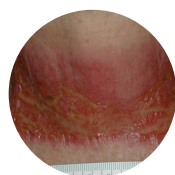
Mepilex Lite is a highly conformable dressing that absorbs exudate and maintains a moist wound environment. The Safetac technology layer seals around the wound edges, preventing the exudate from leaking onto the surrounding skin, thus minimising the risk of maceration. The Safetac technology layer also ensures atraumatic dressing changes. Mepilex Lite may be cut to suit various wound shapes and locations.

Benefits of Mepilex Lite

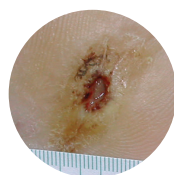
- Atraumatic to the wound and surrounding skin on removal¹
- Promotes patient comfort during wear and minimises pain upon removal¹
- Minimises the risk of maceration³
- Conforms well to body contours
- Thin and comfortable to wear
- Easy to handle; may be cut for customisation
- Maintains a moist wound environment
- Viral and bacterial barrier



Non to low exuding wound



Radiation skin reaction



Foot ulcer

Areas of use

You can use Mepilex Lite to treat a wide range of exuding wounds such as:

- Non to low exuding wounds
- Leg and foot ulcers
- Pressure injuries
- Partial thickness burns
- Radiation skin reactions
- Epidermolysis Bullosa
- Under compression bandaging
- Peristomal irritation
- In combination with gels
- Protection of compromised and/or fragile skin

Mepilex Lite ordering information[†]

Product Code	Size	Pcs/box
284000	6 x 8.5 cm	5
284100	10 x 10 cm	5
284300	15 x 15 cm	5
284500	20 x 50 cm	4

[†] Packaged sterile in single packs.

Lyofoam[®] Max

Highly absorbent polyurethane foam dressing

Polyurethane backing film

- Moisture vapor permeable
- Shower-proof[†]
- Provides bacterial and viral barrier^{2,3,†}
- Passed wet bacterial resistance test

[†]Microbes larger than 25 nm

Hydrophilic polyurethane foam

- High absorbency and fluid retention capacity
- Non-adhesive
- Soft, conformable and easy to apply and remove



How Lyofoam Max works

Lyofoam Max is a highly absorbent dressing. It consists of a polyurethane foam and a shower-proof[†] backing film with high permeability to allow for an effective exudate management of moderate to highly exuding wounds.

Benefits of Lyofoam Max

- Reduced risk of maceration, less potential for leakage and longer wear-time
- Shower-proof[†] backing film acts as a barrier to bacteria and virus penetration^{2,3}
- Works under compression
- Easy to apply and remove
- Soft and conformable and provides comfort to patients
- Non-sensitising
- Wide range of sizes available for different wound types

Areas of use

Lyofoam Max is designed for the management of moderate to heavily exuding wounds such as:

- Leg ulcers
- Pressure injuries

Frequency of change

Lyofoam Max should be changed according to clinical practice or when saturated.

Lyofoam Max ordering information[†]

Product Code	Size	Pcs/box
603200	7.5 x 8.5 cm	10
603201	10 x 10 cm	10
603204	15 x 15 cm	10
603206	20 x 20 cm	10

[†]Packaged sterile in single packs.

Wound Contact Layers

Mepitel® One

Mepitel®

Mepilex® Transfer



Mepitel® One

Soft silicone wound contact layer - single-sided

Supports optimal undisturbed healing¹⁻⁵

- Advanced dressing maintains product properties over time - leaves no residue⁷ and will not dry out
- Safetac adhesive technology provides optimal fixation³ - can remain in place for up to 14 days⁴

Supports healing progress⁴ and care providers

- Pre-printed symbol facilitates safe removal on skin tears with a fully or partially intact flap*
- Transparent net enables optimal wound assessment avoiding unnecessary dressing changes⁵
- Perforated structure allows topical preparations to pass through to wounds effectively^{1,8}

* Available in three sizes 6x7cm, 9x10cm and 13x15cm

Reduces pain and skin damage for patients^{2,3,6}

- One-sided Safetac® interface minimises patient discomfort during dressing removal³
- Safetac technology seals the wound margins and reduces the risk of maceration^{2,3}
- Safetac technology will not adhere to the moist wound bed, only dry skin^{2,3}

Safetac
TECHNOLOGY



How Mepitel One works

Mepitel One can be left in place for up to 14 days⁴ depending on the condition of the wound. This reduces the necessity for frequent primary dressing changes. The open, perforated structure of Mepitel One allows exudate to pass into an outer absorbent dressing. The Safetac layer prevents the outer dressing from sticking to the wound and protects it during the healing phase. The Safetac layer seals around the wound edges preventing exudate from leaking onto the surrounding skin, thus minimising the risk of maceration.

Benefits of Mepitel One

- Minimises pain and trauma at dressing changes^{1,2}
- The Safetac technology layer is on wound contact side only (one-sided) for easy handling and application
- May remain in place for up to 14 days⁴⁻⁸ which allows cost-effective^{9,10} and undisturbed wound healing
- Enables less frequent dressing changes
- Minimises the risk of maceration³
- Leaves no residue and does not dry out
- Transparent for easy wound inspection during application and wear
- Conforms well to body contours, promoting patient comfort during wear
- Stays in place

Precautions: 1. If you see signs of infection, e.g. fever, the wound or surrounding skin becoming red, warm or swollen, consult a healthcare professional for appropriate treatment. 2. Always consult a healthcare professional before using Mepitel One on Epidermolysis Bullosa patients. 3. Do not use Mepitel One on patients with known sensitivity to silicone or polyurethane. 4. Sterile. Do not use if inner package is damaged or opened prior to use. Do not re-sterilise. 5. Do not reuse. If reused performance of the product may deteriorate and cross-contamination can occur.

Areas of use

Mepitel One is a wound contact layer designed for the management of a wide range of exuding wounds such as:

- Skin tears
- Skin abrasions
- Surgical incisions
- Traumatic wounds
- Partial and full thickness grafts
- Radiated Skin
- Leg and foot ulcers

It can also be used as a protective layer on non-exuding wounds, blisters and on areas with fragile skin.

Mepitel One Ordering information†

Product Code	Size	Pcs/box
289100	5 x 7.5 cm	10
289300	7.5 x 10 cm	10
289500	10 x 18 cm	10
289700	17 x 25 cm	5
289670	24 x 27.5 cm	5
289750	27.5 x 50 cm	2
289170*	6 x 7 cm	5
289270*	9 x 10 cm	5
289470*	13 x 15 cm	5

† Packaged sterile in single packs.

* Codes with pre-printed symbols

Mepitel®

Soft silicone wound contact layer - double-sided



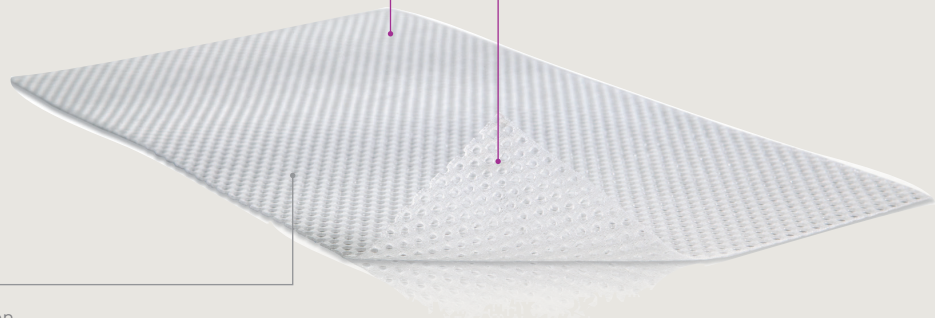
Safetac
TECHNOLOGY

Safetac® technology layer

- Safetac technology on both sides
- Less pain during dressing changes¹
- Does not stick to the wound, for less disturbance²
- Seals wound margins to avoid maceration³

Open mesh structure

- Allows transfer of exudate and application of topical treatment
- Transparent



How Mepitel works

Mepitel may be left in place for up to 14 days⁴⁻⁸, depending on the condition of the wound, which reduces the necessity for frequent primary dressing changes. The porous structure of Mepitel allows exudate to pass into an outer absorbent dressing. The Safetac technology layer prevents the outer dressing from sticking to the wound and ensures atraumatic dressing changes. The Safetac technology layer also seals around the wound edges, preventing the exudate from leaking onto the surrounding skin, thus minimising the risk of maceration.

Benefits of Mepitel

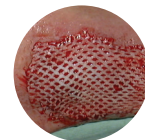
- Minimises trauma and pain during dressing changes^{1,2}
- Prevents damage to newly formed delicate tissue upon removal
- May remain in place for up to 14 days⁴⁻⁸ for cost-effective^{9,10} undisturbed wound healing
- Enables less frequent dressing changes
- Minimises the risk of maceration³
- Does not adhere to moist wound beds, but to dry tissue only
- Transparent for easy wound inspection during application and during wear
- Conforms well to body contours, promoting patient comfort during wear

Precautions: 1. The wound should be inspected for signs of infection according to clinical practice. Consult a healthcare professional for the appropriate medical treatment. 2. Mepitel used on burns treated with meshed grafts: avoid placing unnecessary pressure upon the dressing. 3. Mepitel used after facial resurfacing: avoid placing pressure upon the dressing, lift and reposition the dressing at least every second day. 4. When used on bleeding wounds or wounds with high viscosity exudate, Mepitel should be covered with a moist absorbent dressing pad. 5. When Mepitel is used for the fixation of skin grafts, the dressing should not be changed before the fifth day post application.

Areas of use

Mepitel is a wound contact layer designed for the management of a wide range of exuding wounds such as:

- Skin tears
- Skin abrasions
- Surgical incisions
- Partial thickness burns
- Blistering
- Lacerations
- Venous and arterial leg ulcers
- Diabetic foot ulcers
- Partial and full thickness grafts



Skin grafts



Skin tears

Mepitel Ordering information[‡]

Product Code	Size	Pcs/box
290510	5 x 7.5 cm	10
290710	7.5 x 10 cm	10
291010	10 x 18 cm	10
292005	20 x 30 cm	5

[‡] Packaged sterile in single packs.

Mepilex® Transfer

Soft silicone exudate transfer dressing



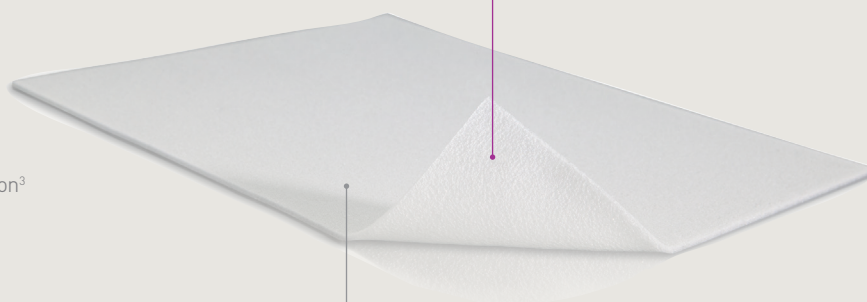
Safetac
TECHNOLOGY

Safetac® technology layer

- Less pain during dressing changes¹
- Does not stick to the wound, for less disturbance²
- Seals wound margins to avoid maceration³

Thin polyurethane foam layer

- Transfers the exudate away from the wound
- Conforms well on difficult-to-dress wounds
- Ideal for large, exuding wounds



How Mepilex Transfer works

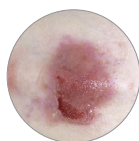
Mepilex Transfer is thin and conformable for even the most difficult-to-dress wounds. The Safetac technology layer ensures direct contact with the wound and the surrounding skin, including uneven surfaces. As the Safetac technology layer seals around the wound, the foam structure of Mepilex Transfer allows the exudate to move vertically into a secondary absorbent pad. Mepilex Transfer maintains a moist wound environment in combination with an appropriate secondary dressing.

Benefits of Mepilex Transfer

- Transfers exudate away from the wound
- Atraumatic to the wound and surrounding skin on removal²
- Conforms well to body contours
- May be cut to shape
- Minimises the risk of maceration³
- Promotes patient comfort during wear and minimises pain upon removal
- Suitable for large areas of fragile skin



Radiation-induced dermatitis



Epidermolysis Bullosa (EB)



Fungating malignant wound

Areas of use

Mepilex Transfer is a wound contact layer designed for the management of a wide range of exuding wounds such as:

- Exuding and difficult-to-dress wounds
- As a protective layer on non-exuding wounds
- Large areas with fragile skin
- Under compression

Apply an appropriate secondary dressing to maintain a moist wound environment.

Mepilex Transfer Ordering information[†]

Product Code	Size	Pcs/box
294600	7.5 x 8.5 cm	5
294700	10 x 12 cm	5
294800	15 x 20 cm	5
294502	20 x 50 cm	4

[†]Packaged sterile in single packs.

Post-Operative Dressings

Mepilex® Border Post-Op with 360° Flex technology
Mepilex® Border Post-Op

Mepilex® Border Post-Op

with 360° Flex technology

Flexible all-in-one post-op dressing

Supports longer wear times and low frequency of dressing changes¹⁻⁴

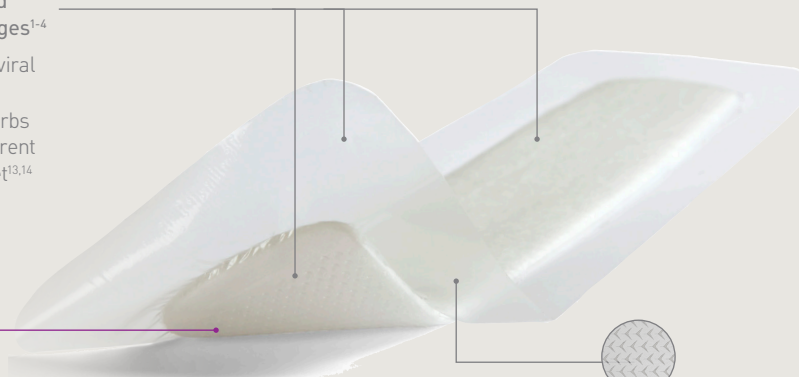
- Shower-proof⁵⁻⁸, bacteria and viral barrier^{5-6,9-10,†}
- Ultra-absorbent material absorbs more blood than any other current leading dressing on the market^{13,14}
- Transparent border allows inspection without removal

† Microbes larger than 25 nm



Clinically shown to minimise dressing-related skin damage and pain¹⁻⁴

The Safetac® interface adheres gently, maintaining skin integrity¹⁻⁴



Supports early patient mobilisation¹⁻⁴
Unique Flex-cut pad stretches in all directions, conforming to the body even as it moves



How Mepilex Border Post-Op works

Mepilex Border Post-Op is an all-in-one post-op dressing that very effectively absorbs and retains surgical exudate. The Safetac interface minimises painful wound and peri-wound skin damage on dressing removal¹⁻⁴. The Safetac interface seals the wound edges, preventing the exudate from leaking onto the surrounding skin, minimising the risk of maceration¹¹⁻¹⁵. The Flex-cut pad gives high flexibility and very good conformability over joints, such as knees or hips, promoting patient mobilisation¹⁻⁴.

Benefits of Mepilex Border Post-Op

- Minimises skin damage, including blistering¹⁻⁴
- Very high absorption capacity leading to fewer dressing changes^{1-4, 11-12,15}
- High flexibility giving excellent comfort and conformability¹⁻³
- Can be lifted and adjusted without losing its adherent properties¹⁶
- Wide transparent borders for easy wound area inspection
- Bacteria and viral barrier^{5-6,9-10} (microbes >25nm)
- Leaves no residues - low potential for skin irritation and allergy¹⁻⁴
- Shower-proof⁵⁻⁸

Areas of use

Mepilex Border Post-Op is designed for exuding wounds. It is intended for acute wounds, such as surgical wounds, cuts and abrasions. It is optimised for post-op use and blood absorption. The design gives very high flexibility and makes it ideal to be used over joints, such as hips and knees.

Frequency of change

Mepilex Border Post-Op may be left in place for several days depending on the condition of the wound and the surrounding skin, or as indicated by accepted clinical practice.

Mepilex Border Post-Op ordering information†

Product Code	Size	Pcs/box
496100	6 x 8 cm	10
496200	9 x 10 cm	10
496300	10 x 15 cm	10
496400	10 x 20 cm	10
496450	10 x 25 cm	10
496600	10 x 30 cm	10
496650	10 x 35 cm	5

† Packaged sterile in single packs.

Mepilex® Border Post-Op

Flexible all-in-one post-op dressing

Multi-layered absorbent pad with Flex Technology

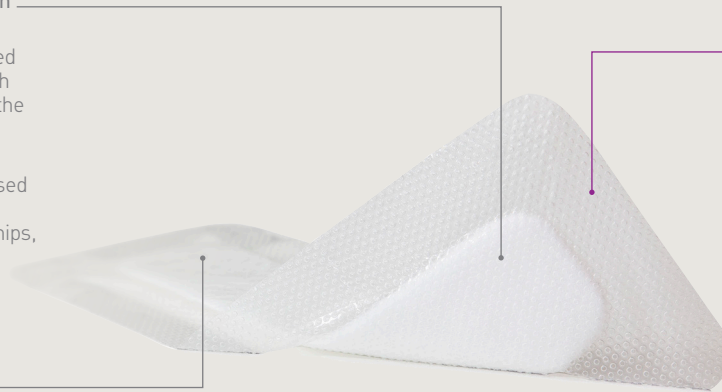
The Flex Technology is a perforated pattern in the absorbent pad which opens up the structure and gives the dressing very high flexibility.

- Superabsorbent fibres for high and fast absorption with optimised retention¹
- Very high flexibility over joints (hips, knees etc.)²

Polyurethane backing film

- Highly breathable
- Shower-proof¹¹⁻¹⁴, bacteria and viral barrier^{11-12, 15-16,†}
- Wide fixation borders

† Microbes larger than 25 nm



Safetac®
TECHNOLOGY

Safetac® technology layer

- Minimises incidence of blisters³
- Minimises pain and trauma at dressing changes⁴
- Does not adhere to the moist wound bed, but to dry skin only⁵
- Seals the wound margins and reduces the risk of maceration⁶⁻⁸
- Minimises the risk of adherence to sutures and staples³
- Minimises the risk of skin stripping^{9,10}

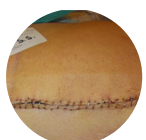


How Mepilex Border Post-Op works

Mepilex Border Post-Op is an innovative surgical wound dressing designed for the challenges of surgical sites. The dressing incorporates Safetac® technology for gentle adhesion, superabsorbent fibres for excellent exudate management and Flex Technology for very high flexibility.

Benefits of Mepilex Border Post-Op

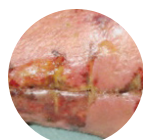
- Minimises incidence of blisters³
- Minimises pain and trauma at dressing changes⁴
- Excellent exudate wound management optimised for post-op wounds¹
- High flexibility giving excellent conformability and patient mobilisation²
- Minimises the risk of adherence to sutures and staples³
- Seals the wound margins and reduces the risk for maceration⁶⁻⁸
- Can be repositioned on application without losing its adherent properties
- Wide transparent borders for easy wound area inspection
- Bacteria and viral barrier^{11-12,15-16} (microbes >25nm)
- Leaves no residues - low potential for skin irritation and allergy
- Shower-proof¹¹⁻¹⁴



Post-op wound



Post-op wound with blisters



Infected post-op wound

Areas of use

Mepilex Border Post-Op is designed for exuding wounds. It is intended for acute wounds, such as surgical wounds, cuts and abrasions. It is optimised for post-op use and blood absorption. The design gives very high flexibility and makes it ideal to be used over joints, such as hips and knees.

Mepilex Border Post-Op ordering information†

Product Code	Size	Pcs/box
495100	6 x 8 cm	10
495200	9 x 10 cm	10
495300	9 x 15 cm	10
495400	10 x 20 cm	10
495450	10 x 25 cm	10
495600	10 x 30 cm	10
495650	10 x 35 cm	10

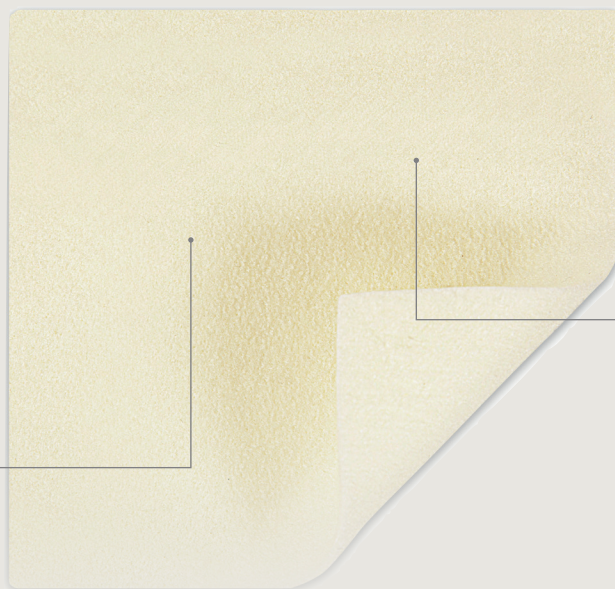
† Packaged sterile in single packs.

Fibre/Alginate Dressings

Exufiber[®]
Melgisorb[®] Plus

Exufiber®

Gelling fibre dressing



High retention capacity¹

- Prevents leakage
- Prevents maceration
- Absorbs and retains exudate, bacteria and blood

PVA material platform incorporating patented Hydrolock® Technology

- Excellent tensile strength
- Dressing removal in one piece
- Saves nursing time and increases patient comfort



How Exufiber works

Exufiber is a sterile non-woven dressing made from highly absorbent polyvinyl alcohol fibres. In contact with wound exudate, **Exufiber** transforms into a gel that facilitates moist wound healing and ease of removal during dressing changes. **Exufiber** absorbs and retains wound exudate. **Exufiber** is available both as sheet and ribbon dressings.

Hydrolock technology

The patented Hydrolock Technology processing method packs each dressing with fibres, leaving less space for fluid to flow freely. This gives the dressings superior fluid retention¹ and reduces the risk of leakage². The mechanically secured fibres are made of a strong synthetic material that swells upon contact with fluid and locks it securely away. This gives Exufiber high retention properties and helps prevent leakage - a major contributor to skin damage, such as maceration.

Benefits of Exufiber

- High tensile strength to enable dressing removal in one piece²
- High retention capacity¹ to prevent leakage and maceration²
- Absorbs and retains exudate, blood and bacteria
- Highly absorbent, also under compression therapy
- Soft and conformable which makes it easy to apply
- Hydrolock Technology
- Can be left in place for up to seven days and up to 14 days on donor sites³

Areas of use

Exufiber wound dressing is intended to be used on a wide range of exuding wounds:

- Leg and foot ulcers
- Pressure injuries
- Partial thickness burns
- Surgical wounds
- Donor sites
- Malignant wounds

Exufiber ordering information[†]

Product Code	Size	Pcs/box
603300	5 x 5 cm	10
603301	10 x 10 cm	10
603302	15 x 15 cm	10
603303	20 x 30 cm	5
603306	4.5 x 20 cm	10
603308	2 x 45 cm	5

[†]Packaged sterile in single packs.

Melgisorb® Plus

Absorbent alginate dressing

Hydrophilic alginate fibres
Soft sterile dressing made of calcium sodium alginate fibres

- Excellent absorption - for highly exuding wounds
- High wet strength - to allow removal in one piece
- High retention - to limit maceration



How Melgisorb Plus works

Melgisorb Plus absorbs large amounts of wound exudate. When absorbing, the alginate fibres become gel-like providing a moist environment conducive to wound healing. The dressing can easily be removed by irrigating with 0.9% normal saline.

Benefits of Melgisorb Plus

- Highly absorbent
- Does not adhere to the wound site when gelled
- Suitable for cavity wounds
- Dressing becomes gel-like on contact with exudate or solutions containing sodium ions (saline)
- Soft/ pliable/ conformable
- Can be cut to shape
- Non-sensitising

Precautions: Melgisorb Plus is not indicated for dry wounds, full-thickness burns or surgical implantations. If infection is suspected, follow facility treatment guidelines.

Areas of use

Melgisorb Plus is intended for a wide range of moderately to heavily exuding wounds, such as:

- Pressure injuries
- Venous and arterial leg ulcers
- Diabetic foot ulcers
- Donor sites
- Post-operative wounds
- Dermal lesions and other external wounds inflicted by trauma

Configurations available both for shallow or deep wounds.

Melgisorb Plus ordering information[†]

Product Code	Size	Pcs/box
252000	5 x 5 cm	10
252200	10 x 10 cm	10
252500	10 x 20 cm	10
253500	3 x 45 cm	5

[†]Packaged sterile in single packs.

Active Dressings

Mesalt®

Mesalt®

Cleansing sodium chloride dressing

Absorbent viscose/
polyester non-woven dressing

- Impregnated with sodium chloride



How Mesalt works

The exudate from the wound releases the sodium chloride from the dressing. **Mesalt** stimulates the cleansing of heavily draining and discharging wounds in the inflammatory phase by absorbing exudate, bacteria and necrotic tissue from the wound, thereby facilitating the natural wound healing process.

Benefits of Mesalt

- Absorbs exudate bacteria and necrotic tissue (slough)
- Effectively stimulates the cleansing of wounds
- Easy application
- Can be cut to shape
- Non-sensitising

Areas of use

You can use **Mesalt** for the management of moderate to heavily exuding non-infected/infected wounds such as:

- Pressure injuries
- Foot ulcers
- Deep wound management including cavity wounds and fistulas



Granulating wound with exudate

Mesalt ordering information†

Product Code	Size	Pcs/box
285580	5 x 5 cm	30
285780	7.5 x 7.5cm	30
286080	10 x 10 cm	30
285280	2 x 100 cm (Ribbon)	10

† Packaged sterile in single packs.

Precaution: Mesalt is not indicated for dry wounds.

Antimicrobial Dressings

Mepilex® Border Ag
Mepilex® Border Sacrum Ag
Mepilex® Ag
Mepilex® Heel Ag
Mepilex® Transfer Ag
Melgisorb® Ag
Exufiber® Ag+

Mepilex® Border Ag

The all-in-one antimicrobial dressing

5th layer:

Backing film provides showerproof¹⁻⁴, viral and bacteria barrier^{1,5-7,†}, and it has high permeability to allow effective moisture vapour transfer.

† Microbes larger than 25 nm.

4th layer:

The non-woven layer helps spread fluid for better vapor transmission. It is coloured grey to distinguish the Ag version from Mepilex Border.

3rd layer:

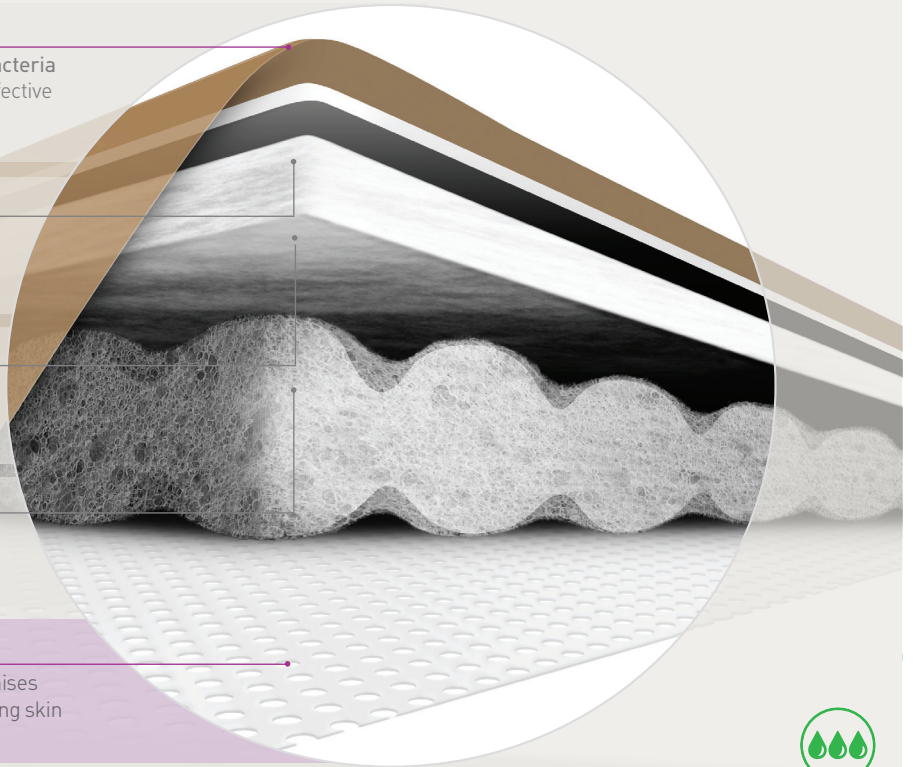
The superabsorbent layer absorbs and stores exudate from the pad below it, keeping it away from the wound and surrounding skin.

2nd layer:

The compressed foam with silver absorbs and spreads exudate while allowing silver to be released.

1st layer:

The Safetac® technology wound contact layer minimises patient pain and trauma to the wound and surrounding skin on removal while reducing the risk of maceration⁸⁻¹⁰.



How Mepilex Border Ag works

Mepilex Border Ag is an antimicrobial all-in-one foam dressing that effectively absorbs and retains exudate and maintains a moist wound environment. The Safetac technology layer seals the wound edges, which prevents the exudate from leaking onto the surrounding skin and minimises the risk of maceration. The Safetac technology layer ensures that the dressing can be changed without damaging the wound or surrounding skin or exposing the patient to additional pain.

Mepilex Border Ag starts to inactivate wound related pathogens within 30 minutes with sustained effect for up to seven days⁴. By reducing the number of microorganisms, Mepilex Border Ag may also reduce odour.

Benefits of Mepilex Border Ag

- Minimises pain and trauma at dressing changes^{8,9}
- Effective and sustained release of silver¹¹
- Self-adherent - no secondary fixation required
- Promotes patient comfort during wear
- May remain in place for several days depending on the condition of the wound
- Low potential for skin irritation and allergy
- Barrier to outside moisture, viruses and bacteria^{1,5-7}

Areas of use

Mepilex Border Ag is designed for the management of medium to high exuding wounds such as:

- Pressure injuries
- Leg and foot ulcers
- Surgical wounds
- Partial thickness burns
- Traumatic wounds (e.g. skin tears and wounds healing by secondary intention)
- Infected wounds as part of a treatment regime under supervision of a qualified healthcare professional

Precautions: 1. Do not use on patients with a known sensitivity to silver. 2. Do not use Mepilex® Border Ag during radiation treatment or examinations, e.g. X-ray, ultrasound or diathermy. 3. Do not use Mepilex® Border Ag together with oxidising agents, such as hypochlorite solutions or hydrogen peroxide.

Mepilex® Border Sacrum Ag

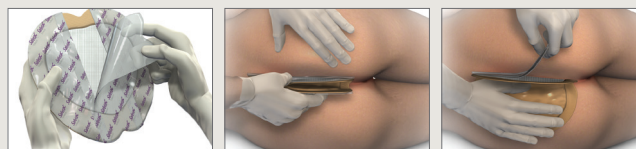
The all-in-one antimicrobial sacral dressing



Benefits of Mepilex® Border Sacrum Ag

- Mepilex Border Sacrum Ag is a shaped sacral dressing with all the benefits of Mepilex Border Ag and SafetaC® technology.
- For wounds with bacterial burden: Mepilex Border Sacrum Ag starts to inactivate bacteria within 30 minutes with sustained release for up to seven days¹⁻⁵.

Mepilex Border Sacrum Ag application



Mepilex Border Sacrum Ag has an innovative release system that makes the dressing easy and hassle-free to apply.

The release paper is divided into three parts. The middle one is removed first. When the center of the dressings is in place, the final two release papers are removed. Application of the dressing is fast and easy.



Mepilex Border Ag is also available in post-op sizes for incision care



Hip incision



Knee incision



Chest incision



Cesarean

Mepilex Border Ag ordering information†

Product Code	Size	Pcs/box
395200	7.5 x 7.5 cm	5
395300	10 x 10 cm	5
395400	15 x 15 cm	5
395600	15 x 20 cm	5

Mepilex Border Ag Surgical ordering Information†

Product Code	Size	Pcs/box
395800	10 x 20 cm	5
395700	10 x 25 cm	5
395900	10 x 30 cm	5

Mepilex Border Sacrum Ag ordering information†

Product Code	Size	Pcs/box
382000	18 x 18 cm	5
382400	23 x 23 cm	5

†Packaged sterile in single packs.

Mepilex® Ag

Absorbent antimicrobial foam dressing

Polyurethane foam pad

- Absorbs exudate
- Conformable
- May be used under compression

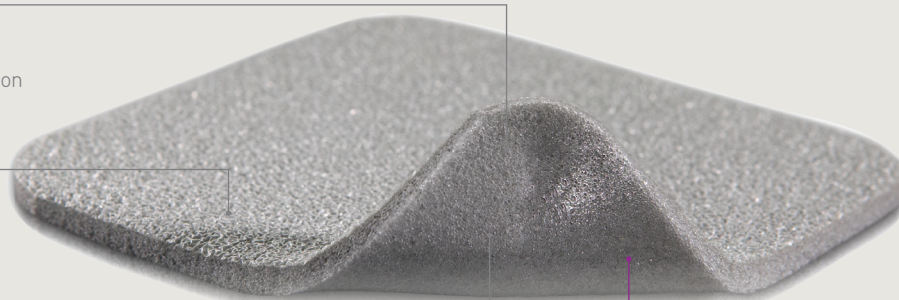
Polyurethane backing film

- Breathable
- Shower-proof[†]
- Bacteria and viral barrier^{1-3,†}

[†]Microbes larger than 25 nm

Powerful silver performance

- Antimicrobial activity within 30 minutes and sustained effect for up to seven days^{1,5-7}



Safetac® technology layer

- Less pain during dressing changes⁸
- Does not stick to the wound, for less disturbance⁹
- Seals wound margins to avoid maceration¹⁰



How Mepilex Ag works

Mepilex Ag is a soft and highly conformable antimicrobial foam dressing that absorbs exudate and maintains a moist wound environment. The Safetac technology layer seals the wound edges, preventing the exudate from leaking onto the surrounding skin, thus minimising the risk of maceration. The Safetac technology layer ensures that the dressing can be changed without damaging the wound or surrounding skin or exposing the patient to additional pain.

Mepilex Ag starts to inactivate wound related pathogens within 30 minutes with sustained effect for up to seven days^{1,5-7}. By reducing the number of microorganisms, Mepilex Ag may also reduce odour.

Benefits of Mepilex Ag

- Minimises pain and trauma at dressing changes^{8,9}
- Stays in place allowing easy application of compression or retention bandages
- Well-suited for use under compression bandages
- May be cut to suit various wound shapes and difficult-to-dress locations
- Promotes patient comfort during wear
- May remain in place for several days depending on the condition of the wound
- May be adjusted without losing its adherent properties
- Low potential for skin irritation and allergy

Areas of use

- Moderately exuding wounds
- Leg and foot ulcers
- Pressure injuries
- Under compression
- Partial thickness burns

Precautions: 1. Do not use on patients with a known sensitivity to silver. 2. Do not use Mepilex Ag or Mepilex Heel Ag during radiation treatment or examinations e.g. X-ray, ultrasound, or diathermy. 3. Do not use Mepilex Ag or Mepilex Heel Ag together with oxidising agents, such as hypochlorite solutions or hydrogen peroxide.

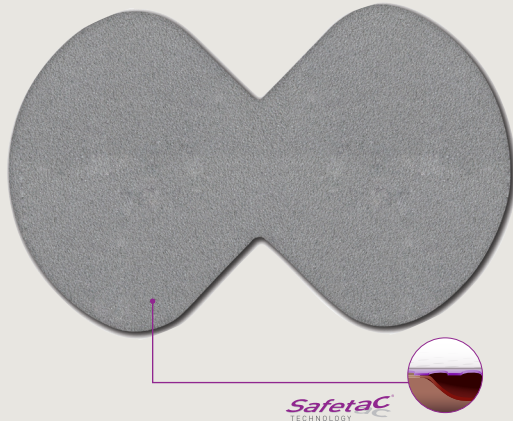
Mepilex Ag ordering information[‡]

Product Code	Size	Pcs/box
287110	10 x 10 cm	5
287210	10 x 20 cm	5
287310	15 x 15 cm	5
287410	20 x 20 cm	5
287510	20 x 50 cm	2

[‡]Packaged sterile in single packs.

Mepilex® Heel Ag

Absorbent antimicrobial heel shaped foam dressing



Shape allows it to fit any heel and minimises the risk of maceration.

Mepilex® Heel Ag ordering information†

Product Code	Size	Pcs/box
388100	13 x 20 cm	5

†Packaged sterile in single packs.

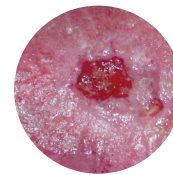


Areas of use

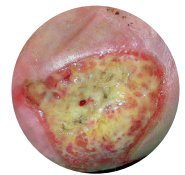
- Moderately exuding wounds
- Leg and foot ulcers
- Pressure injuries
- Under compression
- Partial thickness burns
- Infected wounds as part of a treatment regime under supervision of a qualified healthcare professional



Partial thickness burn

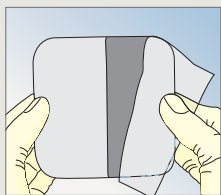


Infected leg ulcer

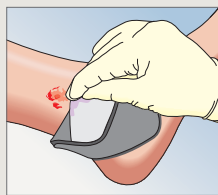


Pressure injury

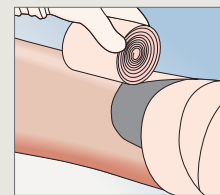
Mepilex Ag application



Clean the wound area. Cut for customisation, if desired. Remove the larger release film.

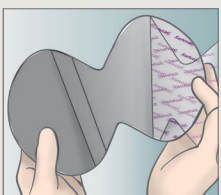


Mepilex Ag should overlap the wound bed by at least 2 cm onto the surrounding skin. Apply the adherent side to the wound. Remove the shorter release film and mould the dressing in place. Do not stretch.

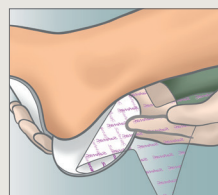


Hold Mepilex Ag securely in place with a light bandage or other dressing retention method (e.g. Tubigrip®, Tubifast®)

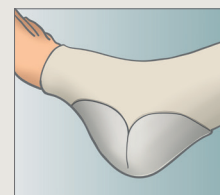
Mepilex Heel Ag application



Clean the wound area. Cut for customisation, if desired. Remove the larger release film.



Fix the dressing under the foot. Remove the shorter release film. Mould the dressing around the heel and bring edges together. Mepilex Heel Ag should overlap the wound bed by at least 2 cm onto the surrounding skin.



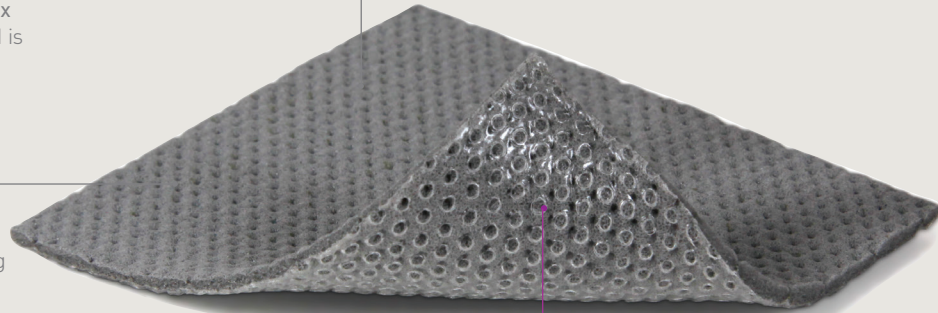
Hold Mepilex Heel Ag securely in place with a light bandage or other dressing retention method (e.g. Tubigrip®, Tubifast®)

Mepilex® Transfer Ag

Antimicrobial soft silicone wound contact layer

- The absence of a backing film allows exudate to transfer into a secondary dressing, that can be changed as needed, while Mepilex Transfer Ag remains in place and is effective for up to 14 days¹

- The antimicrobial silver sulphate impregnated polyurethane foam transfers exudate into a secondary dressing



- Safetac® technology supports less painful and less traumatic dressing changes^{2,3}



How Mepilex Transfer Ag works

Mepilex Transfer Ag is a thin and conformable, antimicrobial wound contact layer. The Safetac technology layer ensures direct contact with the wound and the surrounding skin, including uneven surfaces. As the Safetac technology layer seals around the wound, the foam structure of Mepilex Transfer Ag allows exudate to move vertically into a secondary absorbent dressing. Mepilex Transfer Ag maintains a moist wound environment in combination with an appropriate secondary dressing.

Mepilex Transfer Ag inactivates wound related pathogens within 30 minutes⁴ with a sustained effect for up to 14 days¹. By reducing the number of microorganisms, Mepilex Transfer Ag may also reduce odour.

Benefits of Mepilex Transfer Ag

- Transfers exudate away from the wound
- Minimises pain and trauma at dressing change^{2,3}
- Effective and sustained release of silver provides rapid antimicrobial effect within 30 minutes⁴ that is sustained for up to 14 days¹
- Promotes patient comfort during wear
- Conforms well to body contours
- May be cut to desired shapes
- Effective under compression bandages

Precautions: Please refer to the Instructions for use for details.

Areas of use

Mepilex Transfer Ag is indicated for low to highly exuding wounds including difficult-to-dress areas where an antimicrobial effect is needed, including:

- Partial thickness burns
- Foot and leg ulcers
- Pressure injuries
- Malignant wounds

Mepilex Transfer Ag can be used under compression bandaging.

Mepilex Transfer Ag ordering information[†]

Product Code	Size	Pcs/box
394000	7.5 x 8.5 cm	10
394100	10 x 12.5 cm	5
394700	12.5 x 12.5 cm	5
394800	15 x 20 cm	10
394500	20 x 50 cm	2

[†] Packaged sterile in single packs.

Melgisorb® Ag

Absorbent antimicrobial calcium alginate dressing

Silver containing alginate

- Calcium alginate
- Carboxymethylcellulose (CMC)
- Ionic silver



Alginate with CMC fibres

- Excellent absorption
- High wet strength
- Low lateral wicking

How Melgisorb Ag works

Melgisorb Ag absorbs large amounts of wound exudate. When absorbing, the alginate fibres form a soft moist gel, providing a moist environment conducive to wound healing. The gel can easily be removed by irrigating with normal saline.

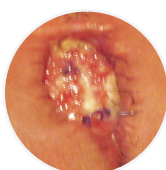
Benefits of Melgisorb Ag

- Absorbs up to 45% more than market leading silver hydrofiber dressing¹
- High fibre strength allows removal in one piece
- Rapid and sustained antimicrobial effect²
- Sustained silver release for up to 21 days²

Precaution: Dressing change frequency will depend on the wound condition and the level of exudate. Initially it may be necessary to change the dressing every 24 hours. If the wound appears dry, saturate the dressing with sterile saline solution prior to removal. Gently remove the dressing from the wound bed. Irrigate the wound site in accordance with standard protocols prior to application of a new dressing. Melgisorb Ag is indicated for external use only.



Cavity wound



Post-op surgical wound



Sacral pressure injury

Areas of use

Melgisorb Ag is intended for a wide range of moderately to heavily exuding partial to full thickness wounds including:

- Surgical wounds
- Trauma wounds
- Leg ulcers
- Pressures injuries
- Diabetic foot ulcers
- Graft and donor sites
- Under compression bandages
- Critically colonised wounds
- Superficial and partial thickness burns

Melgisorb Ag ordering information[‡]

Product Code	Size	Pcs/box
256055	5 x 5 cm	10
256105	10 x 10 cm	10
256155	15 x 15 cm	10
256205	20 x 30 cm	5
256605	3 x 44 cm	10

[‡]Packaged sterile in single packs.

Exufiber® Ag⁺

Hydrolock® Technology

Antimicrobial gelling fibre dressing

High retention capacity

- Reduces leakage onto healthy skin¹
- Reduces the risk of maceration¹
- Absorbs and retains exudate and blood¹⁻³

PVA material platform incorporating patented Hydrolock Technology

- Highly absorbent, also under compression⁴
- Locks in fluid, minimising the risk of leakage and maceration¹
- Can be left in place for up to seven days⁵
- Easy to apply



High wet tensile strength

- Enables one-piece dressing removal⁶
- Reduces the risk of residue and fibres being left in the wound²

Sustained antimicrobial action with silver sulphate

- Kills a broad range of pathogens (in vitro)^{3,7}
- May reduce odour⁵
- Keeps its antimicrobial effect for up to seven days (in vitro)^{3,5}



How Exufiber Ag+ works

When Exufiber Ag+ comes into contact with wound exudate it transforms into a gel which facilitates moist wound healing and easy removal during dressing changes. The silver is released within the dressing when it comes into contact with fluid, and acts as a preservative in the dressing to inhibit or reduce microbial growth.

Benefits of Exufiber Ag+

- High wet tensile strength to enable dressing removal in one piece⁶
- High retention capacity¹ to prevent leakage and maceration
- Absorbs and retains exudate and blood¹⁻³
- Kills a broad range of pathogens including Vancomycin-resistant Enterococci (VRE) and MRSA (in vitro)^{3,5}
- Highly absorbent, also under compression therapy⁴
- Can be left in place for up to seven days⁵
- Can be left in place during X-ray, radiotherapy treatment and MRI

Precautions: All wounds should be inspected frequently. Consult a healthcare professional if signs of infection are present for adequate treatment. Exufiber Ag+ is not intended for dry wounds or full thickness burns. If the dressing dries out and is difficult to remove, it should be moistened according to clinical practice and allowed to soak until it lifts easily. It may take several minutes for Exufiber Ag+ to transform into a gel. Remove the dressing by gently cleansing/flushing.

Areas of use

Exufiber Ag+ wound dressing is intended to be used on a wide range of exuding wounds:

- Leg and foot ulcers
- Pressure injuries
- Partial thickness burns
- Surgical wounds
- Donor sites
- Oncology wounds

Exufiber Ag+ ordering information†

Product Code	Size	Pcs/box
603421	5 x 5 cm	10
603425	10 x 10 cm	10
603423	15 x 15 cm	10
603424	20 x 30 cm	10
603420	2 x 45 cm	5

†Packaged sterile in single packs.

Absorbent dressings

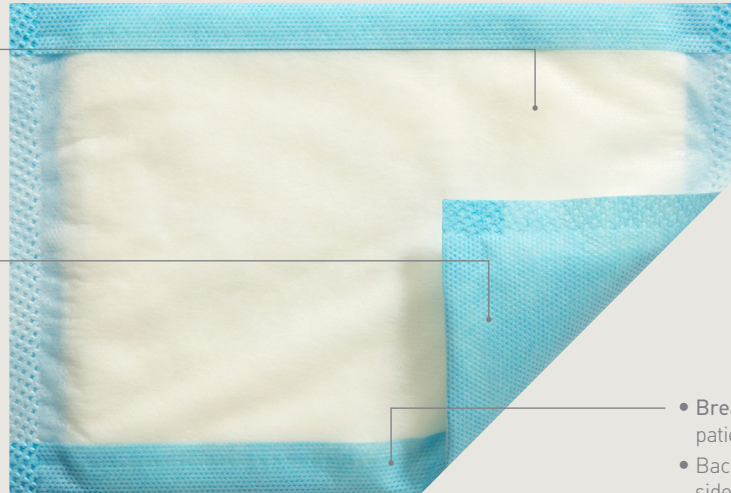
Mesorb®
Mextra® Superabsorbent

Mesorb®

Absorbent dressing with strike-through exudate barrier

- Highly absorbent core for excellent exudate management
- Low-adherent wound contact layer for patient comfort

- Fluid-repellent strike-through barrier to prevent leakage and outer contamination



- Breathable backing for patient comfort
- Backing covering the sides to prevent side leakage

How Mesorb works

Wound exudate is absorbed and transferred into **Mesorb** by the wound contact layer and the diffusion layer. The highly absorbent core absorbs exudate, while simultaneously providing a good protection and ventilating wound cushion.

The fluid-repellent backing prevents external contamination of the wound and protects clothes and bed linen from exudate strike-through. As the backing covers the sides of the dressing, it also prevents side leakage.

Benefits of Mesorb

- Highly absorbent
- Good protective cushioning
- Breathable
- Cost-effective
- The strike-through exudate barrier reduces frequency of dressing changes and prevents soiling of clothing and bed linen

Areas of use

Mesorb is intended for use on moderately to heavily exuding wounds. **Mesorb** can be used as a primary dressing (directly on the wound) or as a secondary dressing, where high absorbency is required, e.g. together with **Mepitel®** or **Mepilex® Transfer**.

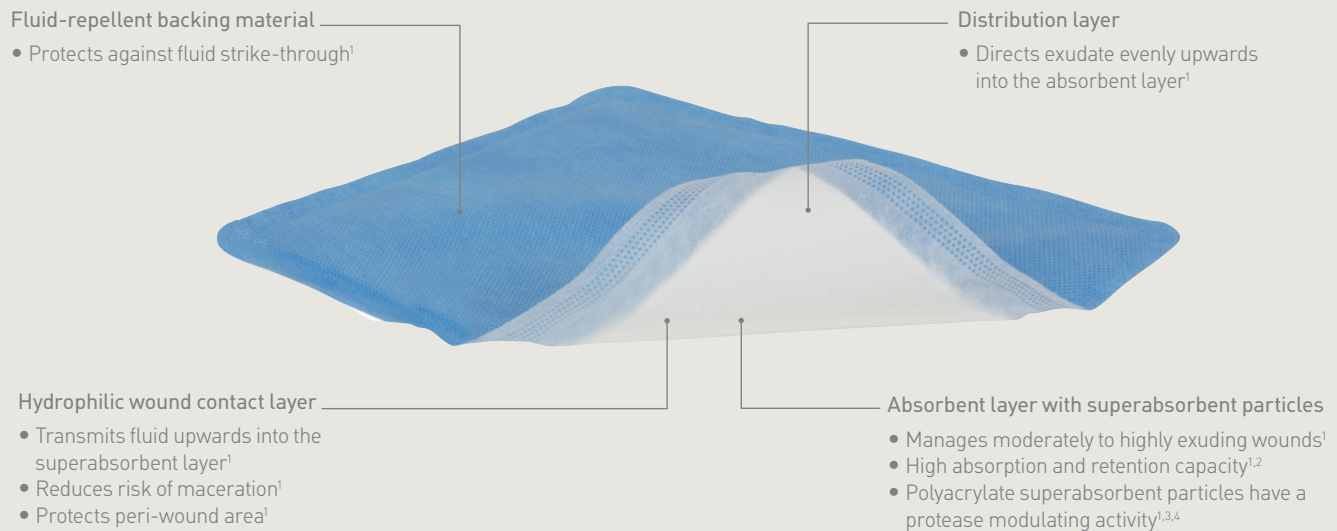
Mesorb ordering information†

Product Code	Size	Pcs/box
677001	10 x 13 cm	50
677201	13 x 15 cm	50
677401	10 x 23 cm	50
677601	15 x 23 cm	50
677701	23 x 25 cm	30
677801	23 x 30 cm	30

† Packaged sterile in single packs.

Mextra® Superabsorbent

Superabsorbent dressing with a fluid-repellent backing film



How Mextra® Superabsorbent works

The upgraded Mextra Superabsorbent absorbs 15% more exudate² than the former dressing. Increased fluid absorption reduces the number of dressing changes¹, treatment costs and the risk of skin maceration. Mextra Superabsorbent absorbs wound exudate and locks it in. High fluid absorption and retention reduces the number of dressing changes, treatment costs and the risk of leakage and skin maceration¹. The upgraded Mextra Superabsorbent has softer borders and is more conformable³. Improved conformability makes it easier to apply and means that it fits along the contours of your patient's body better¹.

Benefits of Mextra Superabsorbent

- Minimises the risk of leakage and maceration¹
- Minimises the need for frequent dressing changes¹
- Minimises treatment costs¹
- Maintains structure and integrity without becoming bulky upon exudate absorption¹
- Protects against fluid strike-through¹
- Promotes patient comfort¹
- Has protease modulating properties^{1,3} and provides a conducive environment for healing to proceed

Notes: The superabsorbent particles in the absorbent layer has protease modulating activity

Areas of use

Mextra Superabsorbent is intended for use on moderately to highly exuding wounds. It absorbs wound exudate through the wound contact layer, retains the exudate within the core and thereby reduces the risk of maceration. The fluid-repellent non-woven backing acts as an exudate barrier and prevents exudate strike-through.

Mextra Superabsorbent ordering information[‡]

Product Code	Size	Pcs/box
610000	12.5 x 12.5 cm	10
610100	12.5 x 17.5 cm	10
610200	12.5 x 22.5 cm	10
610300	17.5 x 22.5 cm	10
610400	22.5 x 27.5 cm	10
610500	22.5 x 32.5 cm	10
610600	22.5 x 42.5 cm	10

[‡]Packaged sterile in single packs.

Film Dressings

Mepitel® Film
Mepore® Film

Mepitel® Film

Self-adhesive breathable, silicone film dressing

Frame delivery system

- Easy application
- Supporting protection foil and paper frame for ease of application

Polyurethane film

- Transparent, breathable, elastic polyurethane film for patient comfort and optimised wound healing environment
- Shower-proof, bacteria and viral barrier^{1-5,†}

† Microbes larger than 25 nm



Safetac® technology layer

- Less pain during dressing changes¹
- Does not stick to the wound, for less disturbance²
- Seals wound margins to avoid maceration³

How Mepitel Film works

Mepitel Film provides a flexible, transparent covering to protect the skin or wound from microbial contamination, fluid strike-through and from other external contamination, while conforming to surface irregularities and body contours. Mepitel Film maintains a moist environment, even though the vapour permeability allows excess moisture to pass away from the skin. Due to Safetac, Mepitel Film provides instant tack adhesion and also ensures atraumatic dressing changes. The dressing does not leave residues and the adhesion level does not increase over time.

Benefits of Mepitel Film

- Minimises pain and trauma at dressing changes^{6,7}
- Limits the risk for damage of newly formed tissue⁸
- Transparent for easy inspection
- Conforms well to body contours, promoting patient comfort during wear
- Bacteria and viral barrier where microbes larger than 25nm³⁻⁵
- Low potential for skin irritation and allergy
- Leaves no residue
- Shower-proof^{1,2}

Precautions Mepitel Film is not a wound contact layer and does not allow wound exudate to pass through the dressing to a secondary layer. Mepitel Film can not be used as primary fixation for IV, cannulae, ports or other infusion and/or life sustaining devices.

Areas of use

Mepitel Film is designed for a wide range of superficial wounds, such as pressure injuries (Stage I and II), superficial skin injuries and superficial burns. Mepitel Film protects fragile and sensitive skin. Mepitel Film can also be used as a protective cover for open surgical wounds, e.g abdomen, to fixate primary dressings and can be used in combination with gels and ointments. Fixation tapes and devices can be placed on top of Mepitel Film, in this way Mepitel Film is used as a protective landing zone for the fixation tape.

Mepitel Film ordering information†

Product Code	Size	Pcs/box
296170	6 x 7 cm	10
296270	10 x 12cm	10
296470	10 x 25 cm	10
296670	15 x 20 cm	10

† Packaged sterile in single packs.

Mepore® Film

Self-adhesive breathable, transparent film dressing

Frame delivery system

- Easy application

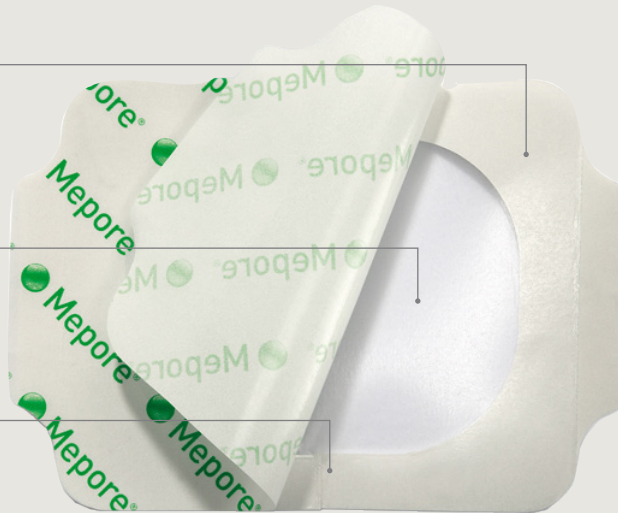
Polyacrylic adhesive

- Skin-friendly adhesive
- Secure fixation

Polyurethane film

- Breathable and elastic
- Transparent
- Barrier to moisture and bacteria^{1†}

[†]Microbes larger than 25 nm

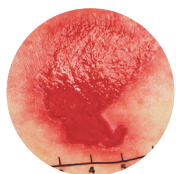


How Mepore Film works

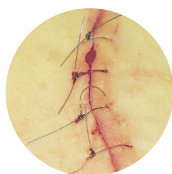
Mepore Film maintains a moist environment in the wound and due to its high vapour permeability, allows excess moisture to pass away from the wound and surrounding skin.

Benefits of Mepore Film

- High breathability
- Easy application
- Conforms easily to body contours
- Skin-friendly adhesive
- Maintains a moist environment
- Bacteria and viral barrier where microbes larger than 25nm¹
- Protects wound surface
- Protects skin from friction injuries
- Shower-proof²



Fragile epithelialising wound



Surgical wound



Skin at risk

Areas of use

Mepore Film is designed for a wide range of clean wounds in the granulation phase such as:

- Superficial burns
- IV sites
- Abrasions
- Lacerations
- Donor sites
- Superficial pressure injuries
- Closed surgical wounds
- Prevention of skin breakdown
- As a secondary dressing

Precautions: Mepore Film should not be used on full thickness wounds involving muscle, tendon, bone or on full thickness burns.

Mepore Film ordering information[‡]

Product Code	Size	Pcs/box
270600	6 x 7 cm	100
271500	10 x 12 cm	70
272500	10 x 25 cm	20
273000	15 x 20 cm	10

[‡]Packaged sterile in single packs.

Island Dressings

Mepore®
Mepore® Pro
Mepore® Film&Pad

Mepore®

Self-adhesive absorbent dressing

Soft, elastic, non-woven fabric backing with high breathability

Absorbent wound pad

Skin-friendly adhesive



How Mepore works

The porous structure of the non-woven backing fabric ensures air and water vapour permeability. **Mepore** is flexible, conforms well to body contours and allows body movements when in place. The polyacrylate adhesive has been designed to be gentle to the skin, but at the same time provide secure fixation. The wound pad can absorb moderate amounts of wound exudate and the low-adherent wound contact layer reduces the risk of adherence to the wound.

Benefits of Mepore

- Skin-friendly water-based adhesive
- Low-adherent wound contact layer minimises risk of adherence to the wound
- Flexible fluid repellent backing
- Easy-to-remove protection paper allows for convenient and aseptic application
- Air permeable - reduces risk of maceration and gives better comfort

Precautions: Care should be taken to ensure that Mepore is not applied under tension, to prevent shearing forces causing damage to the skin. This is particularly important when the dressing is applied over joints.

Areas of use

Mepore is intended for use on low to moderately exuding wounds, such as:

- Surgical wounds
- Cuts
- Abrasions

Mepore ordering information†

Product Code	Size	Pcs/box
670800	6 x 7 cm	60
670900	9 x 10 cm	50
671000	9 x 15 cm	50
671100	9 x 20 cm	30
671200	9 x 25 cm	30
671300	9 x 30 cm	30
671400	9 x 35 cm	30

†Packaged sterile in single packs.

Mepore® Pro

Self-adhesive absorbent surgical dressing

Backing film

- Soft, elastic, non-woven polyester
- Barrier to moisture and bacteria[†]
- Breathable

[†]Microbes larger than 25 nm

Absorbent wound pad

Skin-friendly adhesive



How Mepore Pro works

The backing film allows showering and protects the wound from moisture and contamination. It also protects the clinician, clothing and bed linen from blood or exudate strike-through. Due to an absorbent pad and a high vapour permeability of the backing film, **Mepore Pro** offers good total fluid handling. The polyacrylate adhesive is designed to be gentle to the skin, and at the same time provide secure fixation. The easy-to-remove protection paper permits sterile application and simplifies dressing application.

Benefits of Mepore Pro

- Low-adherent wound contact layer minimises risk of adherence to the wound
- Backing film provides barrier to moisture and bacteria
- Easy-to-remove protection paper allows for convenient and aseptic application
- Breathable film
- Skin-friendly water-based adhesive
- Low friction to clothing and bed linen
- Rounded corners for secure fixation (all sizes up to 9 x 15cm)
- Large sizes ideal for post-surgical use

Precautions: Care should be taken to ensure that Mepore Pro is not applied under tension, to prevent shearing forces causing damage to the skin. This is particularly important when the dressing is applied over joints.

Areas of use

Mepore Pro is intended for use on low to moderately exuding wounds, such as:

- Surgical wounds
- Cuts
- Abrasions

Mepore Pro ordering information[†]

Product Code	Size	Pcs/box
670820	6 x 7 cm	60
670920	9 x 10 cm	40
671020	9 x 15 cm	40
671120	9 x 20 cm	30
671220	9 x 25 cm	30
671320	9 x 30 cm	30

[†]Packaged sterile in single packs.

Mepore® Film&Pad

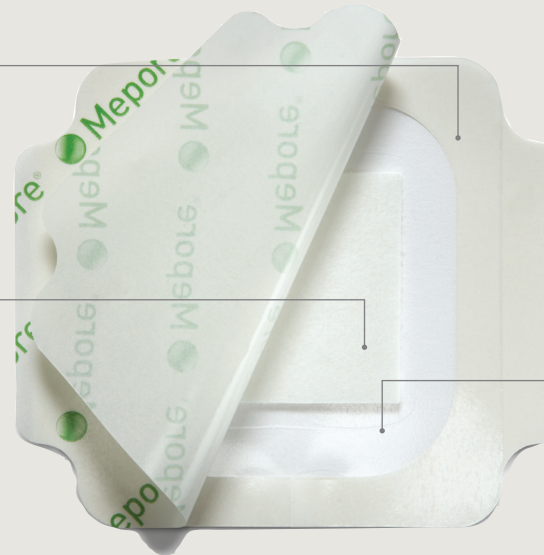
Self-adhesive absorbent film dressing

Frame delivery system

- Easy application

Polyacrylic adhesive

- Skin-friendly adhesive
- Secure fixation



Polyurethane film

- Breathable and elastic
- Transparent
- Barrier to moisture and bacteria[†]

[†]Microbes larger than 25 nm



How Mepore Film&Pad works

Thanks to its highly absorbent pad and high vapour permeable backing film, **Mepore Film&Pad** offers very good fluid handling. **Mepore Film&Pad** provides a flexible transparent covering to protect the wound, while conforming to surface irregularities and body contours. The skin-friendly polyacrylate adhesive is designed to be gentle to the skin, and at the same time provide secure fixation. **Mepore Film&Pad** dressings are easy to apply and change aseptically, also when wearing gloves.

Benefits of Mepore Film&Pad

- Low-adherent wound contact layer
- High breathability
- Excellent fluid handling
- Easy application, also when wearing gloves
- Conforms easily to body contours
- Bacteria and viral barrier where microbes larger than 25nm¹
- Gentle and secure fixation
- Skin-friendly adhesive
- Wide assortment
- Shower-proof²

Areas of use

Mepore Film&Pad is intended for use on low to moderately exuding wounds, such as:

- Surgical wounds
- Cuts
- Abrasions

Mepore Film&Pad ordering information[‡]

Product Code	Size	Pcs/box
275100	4 x 5 cm	85
275200	5 x 7 cm (Oval)	85
275300	5 x 7 cm (Square)	85
275400	9 x 10 cm	30
275500	9 x 15 cm	30
275600	9 x 20 cm	30
275700	9 x 25 cm	30
275900	9 x 35 cm	25

[‡]Packaged sterile in single packs.

Bandages

Tubifast® TwoWay Stretch®

Tubifast® Garments

Tubigrip®

TSSB®

Tubinette®

Elset® / Elset® 'S'

Setopress®

Tubifast® 2-Way Stretch®

Lightweight tubular retention dressing

Tubular bandage does not require pins or tape

Quick and easy to use - cut to size and stretch over the dressing for an even, non-constricting fit

Decreased fraying, so there is less risk of fibres in the wound¹



The roll design ensures use by minimising waste

Available in five colour-coded widths, Tubifast 2-Way Stretch has been designed to fit snugly over all limbs, no matter what the shape or size

Tubifast 2-Way Stretch's light, radial and longitudinal elasticity allows patients complete freedom of movement, with added comfort²

How Tubifast® works

Tubifast 2-Way Stretch is manufactured from viscose with very fine elastane threads knitted into the fabric radially and longitudinally to provide light elasticity. The Tubifast bandage holds dressings securely, without constriction or compression.

Each size is identified by a coloured line knitted into the bandage. It is quick and easy to use - cut to size and stretch over the dressing for an even, non-constricting fit.

Benefits of Tubifast

- Tubifast bandages holds dressings securely, without constriction or compression
- Tubular presentation - no requirement for pins or tape
- Colour-coded for quick reference
- Wide range of sizes to fit everything from small limbs to large adult trunks
- Quick and easy application
- Radial and longitudinal elasticity allows patients complete freedom of movement, with added comfort²
- Decreased fraying reduces the risk of fibres in the wound

Material properties

- Viscose, Elastane and Polyamide
- Does not contain natural rubber latex

Areas of use

Tubifast may be used for dressing retention and skin covering for any part of the body. It can also be used for patch wrapping and as an undercast stockinette.

Use as a secondary dressing over other Mölnlycke dressings, such as Mepilex®, Mepilex Ag, Mepilex Lite, Mepitel®, Mepilex Transfer, Mepilex XT and Mepilex Heel.

Washing Instructions



Tubifast 2-Way Stretch ordering information[‡]

Product Code	Line	Product	Limb size	Width*
2434	RED	Small Limbs	9-18cm	3.5cm
2436	GREEN	Small and medium limbs	14-24cm	5cm
2438	BLUE	Large limbs	24-40cm	7.5cm
2440	YELLOW	Extra-large limbs, heads, children's trunks	35-64cm	10.75cm
2444	PURPLE	Large adult trunks	64-130cm	20cm

[‡] Packaged in single packs; non-sterile

* Length for all Tubifast 2-Way Stretch is 10 m.

Tubifast® Garments

2-Way Stretch®

Ready-to-wear garments

Convenient, quick and simple way to wet or dry wrap with no requirement for pins, tapes or ties¹

Sizes for younger children incorporate fun Skin Care World characters to aid compliance¹

Comfortable to wear under nightwear and ordinary clothes¹



Help to promote fully active days and restful nights (when used in conjunction with emollient therapy)¹

SoftSeam Technology™ helps to reduce irritation of sensitive skin

Complete freedom of movement through the two way stretch construction

How Tubifast Garments work

Ready-made Tubifast Garments, for dressing retention and wet or dry wrapping, are available in full-sleeved vests, tights, leggings, socks and gloves. For children of six months and over.

With no tapes, pins or ties, Tubifast Garments are quick and easy to apply, and their two-way stretch construction ensures complete freedom of movement, so aiding compliance.

Comfortable to wear under nightwear and ordinary clothes, they also help to promote fully active days and restful nights. They are also washable for continued use.

Benefits of Tubifast Garments

- SoftSeam Technology helps to reduce irritation of sensitive skin
- Convenient, quick and simple way to wrap, so aiding compliance
- Comfortable to wear under nightwear and ordinary clothes
- Freedom of movement
- Available in full-sleeved vests, tights, leggings, socks and gloves

Areas of use

Wet wrapping is a therapy used in the treatment of atopic eczema and involves the use of an emollient under retention bandaging. This can be done using the emollient Epaderm Ointment together with Tubifast Garments or Tubifast bandages. An emollient is applied to the affected skin, which is then covered with a damp layer of Tubifast Garment or bandage. Working together, the emollient and the damp layer keep the skin hydrated and moist, and help reduce inflammation¹.

The damp Tubifast Garment or bandage also acts as a retaining layer, ensuring that the emollient stays in contact with the skin. The damp layer also cools and soothes the skin, helping to reduce the itch². A second, dry layer is then applied, which keeps the patient's clothing dry and prevents further scratching from aggravating the skin and causing potential injury.

Dry wrapping is a similar process to wet wrapping.

An emollient is applied to the affected skin, which is then covered with a single, dry layer of Tubifast Garment or bandage.

Tubifast® Garments

Ready-to-wear garments



Areas of use

Tubifast Garments may be used as dressing retention and wet or dry wrapping therapy used in the treatment of atopic eczema.

Use as a secondary dressing over other Mölnlycke® dressings such as Mepilex®, Mepilex Ag, Mepilex Lite, Mepitel®, Mepilex Transfer, Mepilex XT and Mepilex Heel.

Material properties

- Viscose, Elastane and Polyamide
- Does not contain natural rubber latex

Washing Instructions



Important Information

Note: It is recommended that Tubifast Garments are sized according to dimensions as well as age. If in any doubt regarding the selection of size, the next largest size should be chosen (e.g. if the child is wearing a nappy with the Tubifast Garments, please allow for extra sizing).

Tubifast Garments ordering information‡

Product Code	Description	Age/Size
992007	Vest	6-24 months
992008	Vest	2-5 years
992009	Vest	5-8 years
992010	Vest	8-11 years
992011	Vest	11-14 years
992012	Tights	6-24 months
992013	Leggings	2-5 years
992014	Leggings	5-8 years
992015	Leggings	8-11 years
992016	Leggings	11-14 years
992017	Socks	1 size: 2-14 yrs
5923	Gloves	Small Child

‡ Packaged non-sterile in single packs.

Tubigrip®

Multi-purpose elasticated tubular bandage



How Tubigrip works

Tubigrip provides lasting, effective support with complete freedom of movement for the patient. Once the bandage has been applied, covered elastic threads within the fabric move to adjust to the contours of the body and distribute pressure evenly over the surface. The application of Tubigrip is quick and easy.

Tubigrip stays securely in position without pins or tapes, unlike conventional bandages. Tubigrip can easily be reapplied after washing, without loss of effect. Tubigrip 10m helps reduce waste, as only the exact amount required is cut from the roll. Tubigrip 10m is available in two shades – natural and beige.

Benefits of Tubigrip

- Provides comfortable, effective tissue support
- Easy to apply and reapply
- Full range of sizes to suit most applications
- No pins or tapes needed
- Washable and reusable

Areas of use

Tubigrip provides tissue support in the treatment of strains and sprains, soft tissue injuries, general oedema, post-burn scarring, and rib cage injuries.

Material properties

Cotton, Elastodiene (contains natural rubber latex), Polyester

Washing Instructions



Tubigrip ordering information†

Product Code	Assortment	Natural 10m	Beige 10m
A	Infant legs and arms	1435	-
B	Small wrists	1436	1449
C	Medium wrists, Small elbows	1443	1450
D	Large wrists, Medium elbows, Small/Medium ankles, Medium knees	1437	1451
E	Large elbows, Medium/Large ankles, Medium knees	1434	1448
F	Large knees, Small thighs	1438	1452
G	X-Large knees, Medium thighs	1439	1453
J	Large thighs, Small trunks	1440	-
K	Small/Medium trunks	1441	-
L	Large trunk	1442	-
M	X-Large trunk	1444	-

† Packaged in boxes containing non-sterile rolls

Caution: This product contains natural rubber latex which may cause allergic reactions, including anaphylactic responses.

TSSB®

Tubigrip Shaped Support Bandage

The anatomically shaped bandage



How TSSB Tubigrip Shaped Support Bandage works

TSSB Tubigrip Shaped Support Bandage provides lasting, effective support, while allowing ambulant patients complete freedom of movement. The bandage stretches to provide support without wrinkling or slipping down.

Only a single measurement around the calf or forearm is required for precise size selection. The range ensures a good fit for the majority of patients. TSSB can be washed for repeated use.

Benefits of Tubigrip TSSB

- Anatomically shaped to provide support along the complete length of the limb
- Elasticated cotton fabric construction is comfortable as well as effective
- Simple size selection is quick and convenient
- Washable and reusable
- Reapplication after washing is quick and easy for patients
- Provides effective light compression¹

Material properties

Cotton, Elastodiene (contains natural rubber latex) and Polyester

Washing Instructions



Precautions: This product contains natural rubber latex which may cause allergic reactions, including anaphylactic responses.

Areas of use

Tubigrip Shaped Support Bandage (TSSB) is a support bandage used to aid venous and lymphatic return in the management of venous disorders of the legs and arms.

TSSB may also be used as an undercast stockinette in cast bracing, as a support following a cast removal, and to provide pressure therapy in the treatment of post-burn scarring.

TSSB ordering information[‡]

Product Code	Assortment	Size
1472	Small B/C	32-36 cm
1473	Medium C/D	35-39 cm
1474	Large D/E	38-42 cm
1475	Small	32-36 cm
1476	Medium	35-39 cm
1477	Large	38-42 cm
1478	X-Large	41-45 cm
1471	X-Large Extra Thigh	41-45 cm

[‡] Individually packed in cartons of 10.
The below-knee style is also suitable for use on the arms.

TubINETTE®

100% plain viscose surgical stockinette

Helps to protect bedding and clothing from dermatological preparations

Holds dressings securely and comfortably in place

Non-constrictive

Easy to apply and remove

How TubINETTE works

TubINETTE is used to hold dressings securely in place and to protect clothing from ointments and creams.

TubINETTE is made from 100% viscose and is intended for use where dressings have to be changed frequently.

Benefits of TubINETTE

- Holds dressings comfortably and securely in place
- Quick and easy to apply, with or without applicator
- Particularly suitable for use with frequent dressing changes

Material properties

100% Viscose

Areas of use

TubINETTE holds dressings securely and comfortably in place, without constriction or compression.

The tubular construction makes application quick and easy, particularly when using a tubular bandage applicator.

TubINETTE ordering information†

Product Code	Size	Pcs/box
2416	01 Fingers & Toes	1
2417	12 Bulky finger dressings	1

†Supplied individually cartoned in 20-metre rolls; non-sterile

Elset® / Elset® 'S'

Light compression bandages



How Elset /Elset 'S' work

Elset bandages are manufactured from tough, lightweight rayon and covered elastic yarns. Elset and Elset 'S' have slip and conforming properties that help to maintain compression as oedema and swelling are reduced during treatment. Elset is used in the Charing Cross Four Layer Bandage Technique for the treatment of venous leg ulcers. In addition, their light, open weave is comfortable for patients, especially in long-term usage.

The 12m length of Elset 'S' makes it possible to provide one-piece compression bandaging over the full leg.

Both bandages may be washed and reused.

Benefits of Elset/Elset 'S'

- Provides effective light compression
- Maintains compression as oedema and swelling reduces
- Light, open weave for long-term patient comfort
- Elset 'S' is long enough for one-piece, full-leg bandaging
- Visual application guide
- Washable for repeated use

Washing instructions



Areas of use

Elset and Elset 'S' are lightweight compression bandages used to provide compression for the leg following vascular surgery and for general surgical and orthopaedic use. Elset 'S' is specifically recommended for above- and below-knee stump bandaging.

Material properties

Viscose, Natural rubber latex, Silicone (end seal)

Elset ordering information†

Product Code	Width	Stretched length
3482	10cm	6 m
3489	15 cm	8 m

Elset 'S' ordering information†

Product Code	Width	Stretched length
993486	10 cm	12 m
993487	15 cm	12 m

† Non-sterile; individually packed in cartons of 12

Setopress®

High compression bandage



How Setopress works

Setopress is a lightweight high compression bandage. To ensure correct application, a simple visual guide is permanently printed on the bandage. The visual guide consists of colour rectangles which become squares when the correct extension is reached. Extending the Brown rectangles to squares provides 40mmHg at the ankle. Extending the Green rectangles to squares provides 30mmHg at the ankle.

If a patient is not accustomed to compression therapy or finds it difficult to comply, moderate compression may be used initially. When applied correctly, Setopress high compression bandages produce a level of compression that has been shown to heal even long-standing leg ulcers within 12 weeks¹.

The visual application guide makes it easy to apply Setopress consistently and correctly.

Benefits of Setopress

- Provides effective high compression²
- Allows for 2 different levels of compression
- Easy-to-use application technique
- Long enough for even the largest limbs
- Thin enough to be worn with shoes to encourage mobility
- Washable for repeated use

Areas of use

Setopress high compression bandages are used in the treatment of venous leg ulcers and associated conditions requiring graduated compression of the leg.

Washing instructions



Material properties

- Polyamide, Elastane and Cotton
- Does not contain natural rubber latex

Precautions

- DO NOT apply Setopress if arterial insufficiency is present or suspected
- DO NOT use the figure-of-eight bandaging technique
- DO NOT use on limbs with a circumference of less than 18cm

Setopress ordering information[‡]

Product Code	Size	Pcs/box
3505	10 cm x 3.5 m	12

[‡] Non-sterile; individually packed in cartons of 12

Fixation

Mepitac®
Mefix®

Mepitac®

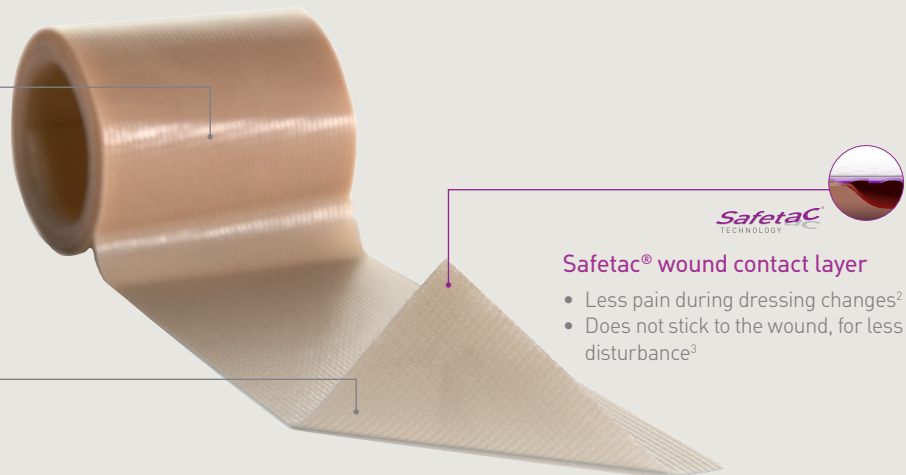
The fixation tape

Polyurethane backing film

- Breathable
- Shower-proof¹

Knitted fabric

- Conformable
- Easy to cut



Safetac® wound contact layer

- Less pain during dressing changes²
- Does not stick to the wound, for less disturbance³

How Mepitac works

Mepitac is highly conformable and easy to apply and remove. The Safetac technology layer ensures secure fixation and atraumatic removal from skin and hair. If inspection or repositioning is necessary, Mepitac can be lifted and re-applied. It is an ideal fixation solution for patients with fragile and sensitive skin or with allergies to traditional adhesives. Mepitac is suitable for patients requiring repeated application and removal of tape over the same area (e.g. neonates and dialysis patients).

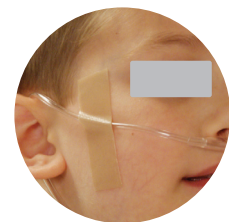
Benefits of Mepitac

- Atraumatic to the skin on removal^{2,3}
- Conforms well to body contours
- Leaves no residue
- Shower-proof film backing¹
- Breathable

Precautions: The adhesion of Mepitac may decrease when used in humid conditions such as incubators or on patients who are diaphoretic. Mepitac is not suitable for fixation of arterial catheters and arterial cannulae.

Areas of use

- Fixation of medical devices such as drains, tubes, probes, electrodes, IV cannulae, and dressings



Mepitac ordering information[†]

Product Code	Size	Pcs/box
298300	2 x 300 cm	1
298400	4 x 150 cm	1

[†]Packaged sterile in single packs.

The self-adhesive fabric tape

Non-woven polyester fabric backing

- Soft and elastic
- Non-absorbent

Protection Paper

- Easy to remove
- Pre-measured
- Perforated split



Polyacrylate Adhesive

- Skin-friendly
- Water-based

How Mefix works

The porous structure of the non-woven fabric ensures air and water vapour permeability. **Mefix** is stretchable, conforms well to body contours and allows body movements when in place. The fabric is non-absorbent and provides a barrier to blood and fluid strike-through. The polyacrylate adhesive has been designed to be gentle to the skin but at the same time provide secure fixation.

The protection paper is pre-measured in 10cm intervals and has a perforated split for easy removal and application. **Mefix** may be easily cut to the desired shape and size.

Benefits of Mefix

- Skin-friendly adhesive
- Provides secure fixation
- Stretchable, conformable fabric backing
- Pre-measured release paper allows for convenient measurement/cutting
- May be applied over flexing areas such as neck, elbows, knees
- Air permeable
- Easy-to-remove backing paper with perforated split

Precautions: Care should be taken to ensure that Mefix is not applied under tension to prevent shearing forces causing damage to the skin. This is particularly important when applied over joints.

Areas of use

- Fixation of dressings, catheters and cannulae

Mefix ordering information†

Product Code	Size	Pcs/box
310299†	2.5 cm x 10 m	1
310599	5 cm x 10 m	1
311099	10 cm x 10 m	1
311599	15 cm x 10 m	1
312000	20 cm x 10 m	1
313000	30 cm x 10 m	1

‡ Packaged in boxes containing individual, non-sterile rolls.

† This size does not have a perforated split in the protection paper

Scar Therapy

Mepiform®

Mepiform®

A thin, discreet dressing for scar management



SafetaC
TECHNOLOGY

SafetaC® wound contact layer

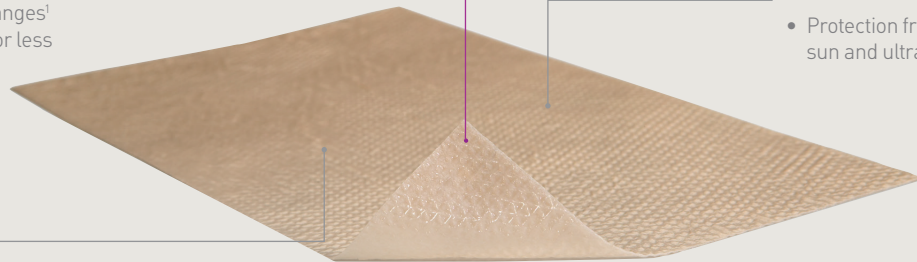
- Less pain during dressing changes¹
- Does not stick to the wound, for less disturbance²

UPF class 5

- Protection from the sun and ultraviolet ray³

Non-woven backing film

- Breathable
- Shower-proof⁴



How Mepiform works

Topical silicone empirically has been shown to have positive impact on hypertrophic and keloid scars^{5,6}. It may take from 3 months up to a year or more to improve an old scar, depending on the condition of the scar tissue. **Mepiform** should optimally be worn 24 hours a day. It is recommended that **Mepiform** is removed once a day (e.g. when showering or bathing) for inspection and washing of the skin. For prophylactic treatment, **Mepiform** should be used for 2–6 months depending on the condition of the scar.

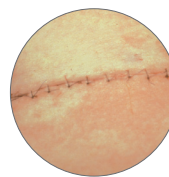
Benefits of Mepiform

- Conforms well to body contours
- No extra fixation is needed
- May be cut to size
- Thin, flexible and discreet
- May be worn in daily activities
- May be re-applied
- May be used for several days

Precaution: Should maceration or rash occur, allow the skin to rest until the symptom has disappeared. If recommended by treating physician, closely monitor gradually re-initiated treatment. Mepiform has an ultraviolet protection factor equivalent to 5⁷.

Areas of use

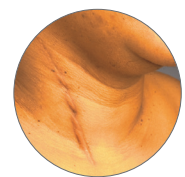
- Old and new hypertrophic and keloid scars
- Closed wounds which may prevent the formation of hypertrophic and keloid scars



Closed surgical wounds



Keloids



Hypertrophic scars

Mepiform ordering information[‡]

Product Code	Size	Pcs/box
293100	4 x 30 cm	5
293200	5 x 7.5 cm	5
293400	10 x 18 cm	5

[‡] Packaged sterile in single packs.

Skin Therapy

Epaderm[®] Ointment
Epaderm[®] Cream

Epaderm® Ointment

An emollient for dry skin conditions

- 3-in-1 relief for dry skin conditions
- No colourings, fragrances, additives or preservatives



- For eczema, psoriasis and other dry skin conditions
- Available in 25g, 125g, 500g and 1kg tubs
- Suitable for all ages¹ including babies¹

Epaderm Ointment

Developed by dermatologists, Epaderm Ointment is a 3-in-1 emollient skin cleanser and bath additive that provides relief for dry skin conditions. Epaderm Ointment does not contain any fragrances, colourings or additives. It can be used on all dry skin conditions and is suitable for all ages including babies. Guidelines published by NICE² state that greasy emollients like Epaderm Ointment as more effective than non-greasy alternatives.

How Epaderm Ointment works

Epaderm is an emollient developed by dermatologists specifically for sufferers of dry skin conditions.

Epaderm offers the three aspects of complete emollient therapy in one³, as it can be used on the skin, as a bath additive or as a skin cleanser.

Epaderm creates a barrier which aids moisture retention within the skin. It is highly versatile.

Benefits of Epaderm Ointment

- Contains no fragrances, colourings or additives
- Aids moisture retention within the skin
- Can be used on the skin, as a bath additive or a skin cleanser and offers complete emollient therapy in one product
- Epaderm is ideal for use in wet or dry wrapping
- Suitable for all ages, including babies
- SLS Free⁴

⁴ Sodium Lauryl Sulfate

Children usually require 250g per week, and children over 10 years of age and adults usually require 600g per week for application to the whole body⁴.

Areas of use

Epaderm® Ointment can be used for eczema, psoriasis and all other dry skin conditions. It is suitable for all ages, including babies.

Alternative Epaderm Ointment uses

Using Epaderm Ointment as a skin cleanser

When caring for dry skin conditions, it is vital to ensure that moisturisation is carried out wherever possible. However, it is equally important that no soaps or products containing detergents are used as they will increase water loss from the skin⁴. Using Epaderm Ointment as a skin cleanser ensures that dry skin can be properly washed, without losing additional moisture or having to deal with the problems that common soap additives might produce. Scoop a small amount from the tub using gloves or a spatula, lather under warm water and then use as a normal soap.

Using Epaderm Ointment in the bath

Soaking the skin in an emollient, for optimum rehydration, is another key step of complete emollient therapy³.

As Epaderm Ointment contains no fragrances, colourings or additives, baths can be taken as often as required. Take 4g from the tub using gloves or a spatula. Melt this in a tumbler of hot water, ensuring it has cooled sufficiently before adding to the bath. Do not apply hot water directly to the skin. When using Epaderm Ointment as a bath additive, care should be taken, as it will make the surface of the bath slippery.

Children usually require 250g per week, and children over 10 years of age and adults usually require 600g per week for application to the whole body⁴.

Material Properties

- Emulsifying Wax
- Yellow Soft Paraffin
- Liquid Soft Paraffin

Epaderm Ointment ordering information

Product Code	Size	Pcs/box
400861	25g	12
99400846	125g	6
99400847	500g	6
99400818	1kg	6

NICE² guidelines for emollient use

NICE recommends that emollients should form the basis of atopic eczema management and should always be used, even when the atopic eczema is clear².

1 measure (4g Epaderm)



Epaderm Ointment Application Guide

Minimum Adult Amounts Required	
Face, Ears, Neck	1 measure twice a day
Arms, Back	2 measures twice a day
Legs	4 measures twice a day
Hands	1/2 measure twice a day
Genitals	1/2 measure twice a day

Children under ten years of age require half of the above amounts

Epaderm® Cream

An emollient for dry skin conditions

- 2-in-1 relief for dry skin conditions
- No colourings, fragrances, additives or preservatives
- Suitable for all ages, including babies¹



- For eczema, psoriasis and other dry skin conditions
- Available in various sizes

Epaderm Cream

Epaderm Cream is a 2-in-1 emollient formulated with ingredients that moisturise and soften the skin. It provides all of the moisturising and protective benefits of paraffin-based emollients and can be used for eczema, psoriasis and other dry skin conditions.

Epaderm Cream is especially effective if applied immediately after washing to counteract the loss of essential oils from the skin. It can be used on all dry skin conditions and is suitable for all ages, including babies.

How Epaderm Cream works

Epaderm Cream is an emollient specifically for sufferers of dry skin conditions.

Epaderm Cream offers 2-in-1 relief as it can be used on the skin or as a skin cleanser.

Epaderm Cream contains glycerine* which helps the skin cells hydrate², giving you longer lasting³, and more effective results⁴.

Glycerine offers protection against irritation caused by detergents or other allergens⁵.

*Glycerine - a naturally occurring humectant which absorbs water and promotes water retention within the stratum corneum.

Benefits of Epaderm Cream

- Creates a barrier that aids moisture retention within the skin
- Can be used on the skin or as a skin cleanser
- Suitable for all ages, including babies
- SLS Free[^]

[^] Sodium Lauryl Sulfate

Children usually require 250g per week, and children over 10 years of age and adults usually require 600g per week for application to the whole body⁶.

Areas of use

Epaderm® Cream can be used for eczema, psoriasis and all other dry skin conditions. It is suitable for all ages, including babies.

Alternative Epaderm Cream uses

Using Epaderm Cream as a skin cleanser

When caring for dry skin conditions, it is vital to ensure that moisturisation is carried out wherever possible. However, it is equally important that no soaps or products containing detergents are used as they will increase water loss from the skin⁷. Using **Epaderm Cream** as a skin cleanser ensures that dry skin can be properly washed, without losing additional moisture or having to deal with the problems that common soap additives might produce. Dispense a small amount onto your hand, lather under warm water and then use as a normal soap.

NICE⁸ guidelines for emollient use

NICE recommends that emollients should form the basis of atopic eczema management and should always be used, even when the atopic eczema is clear⁸

Material Properties

- Yellow Soft Paraffin
- Liquid Paraffin
- Emulsifying Wax
- Chlorocresol
- Purified Water

1 measure (4g Epaderm)



Epaderm Cream ordering information

Product Code	Size	Pcs/box
99400851	50g	12
99400850	500g	6

Epaderm Cream Application Guide

Minimum Adult Amounts Required	
Face, Ears, Neck	1 measure twice a day
Arms, Back	2 measures twice a day
Legs	4 measures twice a day
Hands	1/2 measure twice a day
Genitals	1/2 measure twice a day

Children under ten years of age require half of the above amounts

Other Dressings

Mepore® IV
Lyof foam® Max T

Mepore® IV

Transparent, breathable IV film dressing

Frame delivery system

- Easy application

Reinforcement

- Non-woven reinforcement for extra strength when needed
- Supporting protection foil and paper frame for ease of application

Polyacrylic adhesive

- Skin-friendly adhesive
- Secure fixation



Polyurethane film

- Breathable and elastic
- Transparent
- Barrier to moisture and bacteria^{1†}

† Microbes larger than 25 nm

How Mepore IV works

Mepore IV provides a secure and flexible fixation of intravascular devices. The viral- and bacteria-proof transparent film gives a barrier to strike-through and outer contamination. Due to its high vapour permeability, Mepore IV allows excess moisture to pass away from the skin. The non-woven reinforcement offers extra strength for reliable fixation. The polyacrylate adhesive has been designed to be gentle to the skin, and at the same time provide secure fixation.

The application system with the protection foil, paper frame, and generously-sized side tab, ensures easy application.

Benefits of Mepore IV

- Reliable and secure fixation
- Skin-friendly adhesive
- Non-woven reinforcement for extra strength
- Breathable
- Transparent for visual inspections of the insertion site
- Conforms easily to body contours
- Bacteria and viral barrier where microbes larger than 25nm^{1†}
- Fluid impermeable
- Easy application, also when wearing gloves
- Shower-proof²

Areas of use

Mepore IV is intended for fixation of intravascular devices, such as:

- Peripheral catheters
- Central catheters
- Paediatric catheters
- PICCs / Midlines

Mepore IV ordering information[‡]

Product Code	Size	Pcs/box
274000	5.5 x 5 cm	100
274200	8 x 9 cm	70
274400	10 x 11 cm	70

[‡] Packaged sterile in single packs.

Lyofoam® Max T

Recommended with tracheostomy tubes

Polyurethane backing film

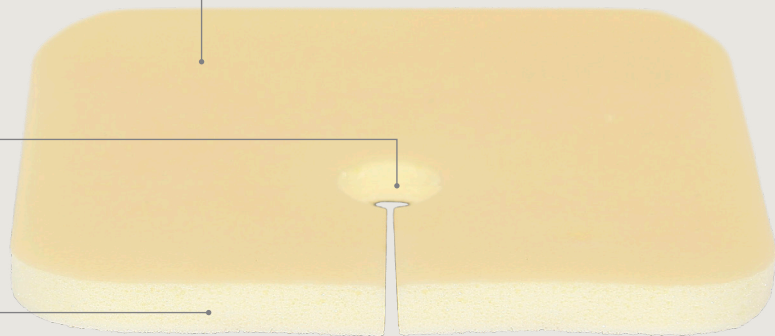
- Moisture vapor permeable
- Shower-proof¹
- Provides bacterial and viral barrier^{2,3}

Aperture

- One third from the edge of the dressing
- Allows optimal handling around tracheostomy tubes

Hydrophilic polyurethane foam

- High absorbency and fluid retention capacity
- Non-adhesive
- Soft, conformable and easy to apply and remove



How Lyofoam Max T works

Lyofoam Max T is a soft tracheostomy dressing that absorbs exudate/secretion and provides protection for the skin around the tracheostomy tubes.

Benefits of Lyofoam Max T

- High absorbency and fluid retention capacity
- Reduced risk of skin maceration, less potential for leakage and longer wear-time
- Moisture resistant¹ backing film acts as a barrier to bacteria and viral penetration^{2,3}
- Protects and cushions the skin around the tracheostomy tubes
- Easy to apply and remove
- Soft and conformable
- Provides comfort to patients
- Non-sensitising

Areas of use

Lyofoam Max T is designed for use around tracheostomy tubes to provide absorption and skin protection.

Frequency of change

Lyofoam Max T should be changed according to clinical practice or when saturated.

Lyofoam Max T ordering information[‡]

Product Code	Size	Pcs/box
603207	9 x 9 cm	10

[‡]Packaged sterile in single packs.

Turning & Positioning Systems

Pressure Injury Prevention & Combined Dressings

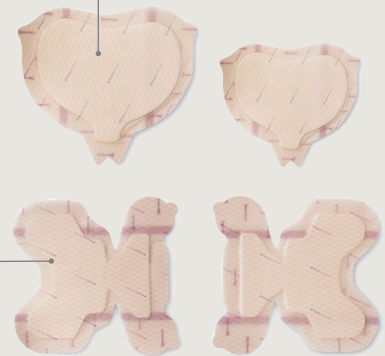
Mölnlycke® Tortoise®
Turning and Positioning System



Mepilex® Border Heel



Mepilex® Border Sacrum



Mölnlycke® Z-Flo®
Fluidized Positioner



Mölnlycke® Z-Flex™
Heel Boot



Mölnlycke® Z-Flex™ Heel Boot

Maintain offloading of heels



How the Mölnlycke Z-Flex Heel Boot works

The heel is the second most common location for pressure injuries in adults¹. A heel pressure injury can be devastating to patient mobility and quality of life, and can lead to osteomyelitis and even limb amputation². Patients who are more prone to heel pressure injury development include those suffering from risk factors such as diabetes mellitus, vascular disease, immobility and an overall Braden Scale score of 18 or less¹.

International guidelines recommend that off-loading devices should completely lift the heel from the bed³. The Mölnlycke Z-Flex Heel Boot was designed to lift the heel while being comfortable to wear and easy to use.

The Z-Flex Heel Boot combines Mölnlycke's fluidised positioner with a single low-pressure air chamber. The fluidised positioner moulds and contours around the vulnerable Achilles tendon, supporting and protecting the tendon. The air chamber in the boot uses Positive Air Displacement to redistribute pressure from the heel and Achilles tendon to the whole lower leg. This adds comfort while encouraging natural alignment of the leg without the need for a wedge or pillow.

Benefits of the Mölnlycke Z-Flex Heel Boot

- Adjustable shin straps to accommodate a variety of leg sizes
- Accommodates use of sequential compression devices
- Anatomically natural foot position is supported by an adjustable ankle support strap
- Designed to be comfortable for the patient
- Built-in gate allows skin assessment of the heel without removing the boot
- Thermal regulating material helps keep legs comfortable
- For single patient use only but can travel with patient across care continuum
- Not made from natural rubber latex or DEHP

Mölnlycke Z-Flex Heel Boot ordering Information

Product Code	Pcs/box
1400122	2
1400123	8

Mölnlycke® Z-Flo® Fluidized Positioner

Assisting patient positioning and offloading



How the Mölnlycke Z-Flo Fluidized Positioner works

Z-Flo Fluidized Positioners are used to redistribute force over a greater surface area or to help offload bony prominences while maintaining neutral body alignment. Unlike beanbag positioners and pillows, these fluidised positioners are not subject to the effect of gravity or memory. Once moulded to meet the anatomic needs of an individual patient, they will hold that shape until remoulded, and are available in a range of sizes.

Benefits of the Mölnlycke Z-Flo Fluidized Positioner

- Will not flatten or heat up like rolled towels and blankets¹
- Does not shift, lose shape or retain moisture like foam rings and wedges²
- Are not subject to the effect of gravity, unlike beanbag positioners and other tools
- Conforms to and supports the patient's body in a comfortable, therapeutic position until next reposition
- Moulds to individual patient and anatomic shapes
- Redistributes force over a greater surface area or helps offload bony prominences
- For single patient use only but can travel with patient across care continuum
- Not made from natural rubber latex or DEHP

Mölnlycke Z-Flo Fluidized Positioner ordering information

Product Code	Description	Size	Pcs/box
1401003	Medium adult positoner	41 x 76 cm	1
1401005	Large adult positoner	64 x 91 cm	1
1401007	Small adult positoner	29 x 50 cm	1

Mölnlycke® Tortoise® Turning and Positioning System

Assisting patient positioning and offloading



How the Mölnlycke Tortoise Turning and Positioning System works

The Mölnlycke Tortoise Turning and Positioning System is designed to make it easier for you to move patients safely into position with less physical exertion – and it is proven to reduce caregiver back injuries related to patient turning and repositioning¹.

The Tortoise system includes a positioning mat with a low-pressure air chamber designed to adapt to the patient by positive air displacement. The low-friction mat is fitted with ergonomic handles on both sides, so you and a colleague both maintain proper body mechanics as you turn the patient. The Tortoise system works in conjunction with the Mölnlycke Z-Flo Fluidized Positioners which can be moulded to maintain the right therapeutic position for the patient.

Benefits of the Mölnlycke Tortoise Turning and Positioning System

- Can help reduce the incidence of pressure injuries and associated costs^{1,2}
- Reinforced handles with an ergonomic grip to maintain proper body mechanics
- May save money on specialty bed rental^{1,3}
- Helps ease patient turning
- Helps redistribute pressure over the patient's sacrum and buttocks
- Proven to reduce caregiver back injuries related to patient turning and repositioning¹

Mölnlycke Tortoise Turning and Positioning System Ordering Information

Product Code	Size	Pcs/box
1400800	Adult	1
1400801	Bariatric	1

Other Bandages

Collar 'n' Cuff®

Collar 'n' Cuff®

Foam padded sling

Collar 'n' Cuff® reduces cost as only the precise amount needed for each application is cut from the roll

Provides tailor-made support for each patient

Provides effective, comfortable support for patients' limbs

Wide range of potential applications



Versatile and economical material – can be made into a variety of slings and braces

Simple construction
100% cotton stockinette cover
Supplied with plastic fasteners

How Collar 'n' Cuff works

The soft foam in the sleeve of Collar 'n' Cuff provides strong, but comfortable, support when fastened in position with the plastic strips supplied.

Used in place of traditional slings, Collar 'n' Cuff provides comfort for the patient, without additional padding. As a balanced arm sling, Collar 'n' Cuff provides effective support at the elbow and wrist, without obscuring the affected limb and without applying any force to the injured side.

Benefits of Collar 'n' Cuff

- Versatile and economical material – can be made into a variety of slings and braces, e.g. balanced arm sling, wrist support sling, clavicle brace shoulder immobiliser
- Simple construction ensures rapid, tailor-made support for each patient
- Provides effective, comfortable support for patients' limbs
- Wide range of potential applications
- Collar 'n' Cuff reduces cost as only the precise amount needed for each application is cut from the roll

Areas of use

Collar 'n' Cuff can be used to form a variety of effective slings and braces, such as a balanced arm sling, wrist support sling, clavicle brace or shoulder immobiliser.

Material properties

- Polyurethane foam core
- 100% cotton stockinette cover
- Plastic securing ties

Collar 'n' Cuff ordering information†

Product Code	Size
5558	5cm x 6m Natural

† Supplied individually packed in cartons of 2

Application Guides

Mepilex[®]

Mepilex[®] Border Lite

Mepilex[®] Border Flex

Mepilex[®] Border Sacrum

Mepilex[®] Border Heel

Mepilex[®] Border Post-Op

Mepitac[®]

Tubifast[®]

Tubigrip[®]

Mepilex® Application guide

Heel

Examples: • Dressing a wound on a heel • Protection for blisters • Cushioning to prevent pressure injuries



Between toes

Examples: • Dressing a wound between toes



Tip of a toe

Examples: • Cushioning out a tip of a toe • Toe nail removal



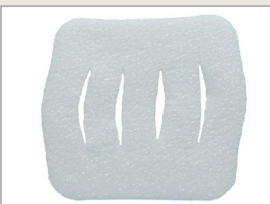
Fingers and toes

Examples: • Finger injuries • Toe injuries



Hands

Examples: • Hand contraction • Knuckle or palm wounds



Elbows

Examples: • Cushioning to prevent pressure injuries • Post treatment of bursitis



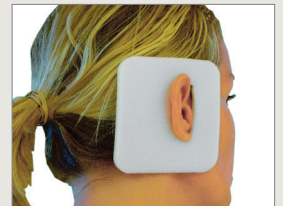
Axilla

Examples: • Lymph nodes • Exuding wounds



Ears

Examples: • Cushioning to prevent pressure injuries on the ears • Wounds around the ear



Around tubes and catheters

Examples: • At PEG, suprapubic catheter and drainage sites • Can also be used around external fixation pins



Mepilex Ordering Information†

Product Code	Size	Pcs/box
294015	5 x 5 cm	5
294100	10 x 10 cm	5
294200	10 x 20 cm	5
294300	15 x 15 cm	5
294400	20 x 20 cm	5
294500	20 x 50 cm	2

Mepilex Heel Ordering Information

Product Code	Size	Pcs/box
288100	13 x 20 cm	5

† Packaged sterile in single packs.

Mepilex® Border Lite Application guide

Finger 5 x 12.5 cm



Toe 5 x 12.5 cm



Heel 10 x 10 cm



Joint 10 x 10 cm



Ear 4 x 5 cm



Mepilex Border Lite Ordering Information†

Product Code	Size	Pcs/box
281000	4 x 5 cm	10
281100	5 x 12.5 cm	5
281200	7.5 x 7.5 cm	5
281300	10 x 10 cm	5
281500	15 x 15 cm	5

† Packaged sterile in single packs.

Mepilex® Border Flex Application guide

How to apply Mepilex Border Flex on a foot ulcer with smaller size dressings.

- 7.5x7.5 cm
- 10x10 cm
- 12.5x12.5 cm



1. Hold the larger section of the release liner and partially peel back.



2. Position the exposed part of the dressing over the wound and apply.



3. Continue to remove the larger section of the release liner and smooth down the borders.



4. Remove the second release liner.



5. Smooth down the borders.

How to apply Mepilex Border Flex on a leg ulcer with larger size dressings.

- 15x15 cm
- 15x20 cm



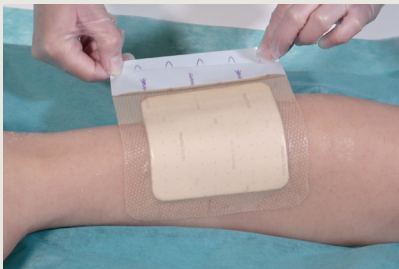
1. Remove the middle release liner.



2. Apply to wound.



3. Remove second release liner.



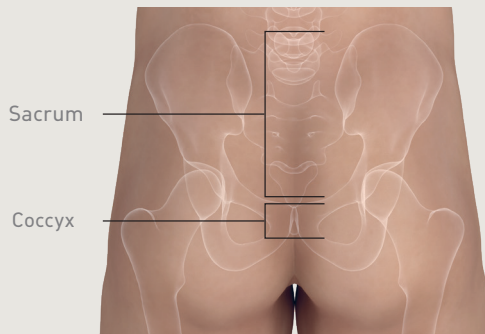
4. Remove third release liner.



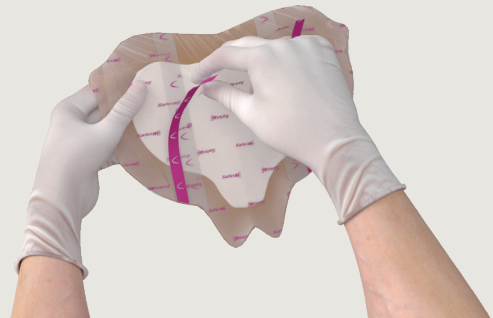
5. Smooth down the borders.

Mepilex® Border Sacrum Application guide

Prepare the area: cleanse intact skin. Dry the surrounding skin thoroughly. Ensure that skin is free of dimethicone, skin sealants and emollients. Use of skin barrier under dressing is not necessary.



1. Area to protect. Assess the patient's anatomy and determine appropriate dressing positioning.



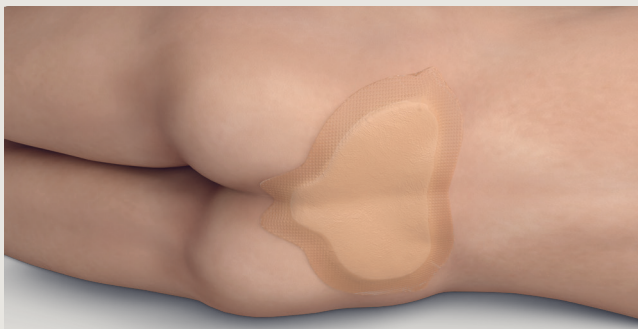
2. After skin is prepared, remove the centre release film by gently pulling on pink-lined edge.



3. Hold buttocks apart. Apply dressing to sacral area and into upper aspect of gluteal cleft, with dressing 'base' positioned to cover coccyx area.



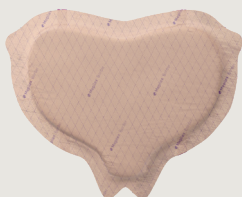
4. Remove side release films and gently smooth each side into place.



5. Product placement.



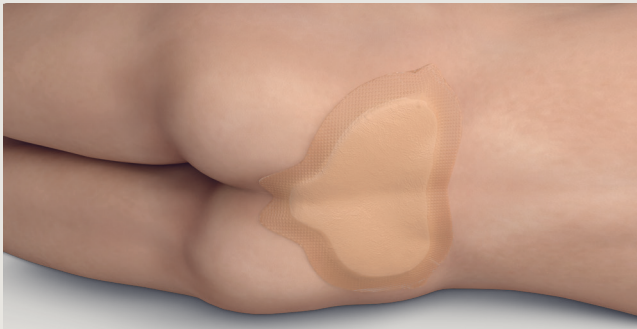
6. Press and smooth the dressing to ensure the entire dressing is in contact with the skin.



Proper fit:

- Dressing should be positioned to fit patient anatomy.
- Ensure dressing conforms to the skin and avoid gaps or air pockets.

Pressure injury prevention re-application guide



1. Assess to confirm dressing is intact and applied correctly.



2. Gently pull handling tabs to begin to release dressing from skin.



3. Continue to release dressing from skin using handling tabs until skin exposed for skin check.



4. While maintaining dressing position at gluteal cleft, perform assessment of skin.



5. Reapply the foam and borders of the dressing.



6. Confirm dressing is replaced to its original position, making sure the border is intact and flat.



7. Press and smooth the dressing to ensure the entire dressing is in contact with the skin.

Mepilex Border Sacrum Ordering Information[†]

Product Code	Size	Pcs/box
282050	16 x 20 cm	5
282450	22 x 25 cm	5

[†]Packaged sterile in single packs.

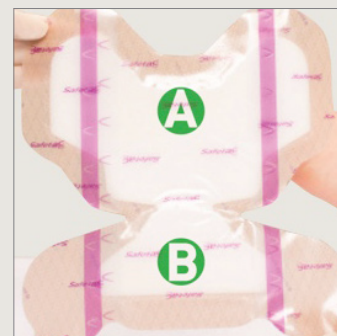
Mepilex® Border Heel Application guide

Note

In case of clinical signs of infection, the use of Mepilex Border Heel may be continued if proper treatment for infection is initiated. Do not use dressing with dry, intact eschar.

Prepare the area:

Cleanse intact skin. Dry the surrounding skin thoroughly. Ensure that skin is free of dimethicone, skin sealants and emollients. Use of skin barrier under dressing is not necessary.



1. After the skin/wound is prepared, dry the area thoroughly. Then remove the central backing and slide the dressing under the heel to the desired location.



2. Apply the adherent part of the dressing marked 'A' (see illustration above) to the posterior heel/Achilles tendon areas, positioning the narrowest part of the dressing at the base of the heel. Do not stretch.



3. Remove the backing from one of the area 'A' flaps (ankle flaps). Apply and smooth. Repeat with the other side. Do not stretch.



4. Gently apply the adherent part of the dressing marked 'B' (see illustration above) under the plantar surface of the foot. Do not stretch.



5. Remove the backing from one of the area 'B' flaps (flaps with tabs). Apply and smooth the border. Repeat with the other side. Do not stretch.



6. Press and smooth the dressing to ensure the entire dressing is in contact with the skin.

Tips and tricks

- **Think 'A'** for 'Achilles' to remember how to apply the dressing correctly.
- Apply the dressing to clean, dry skin.
- Do not stretch the dressing during application.
- Apply a non-skid sock if patient is ambulatory, this will also improve stay-on-ability.
- If the patient is mobile and walking around, we would recommend appropriate non-slip footwear to reduce the risk of falls.
- Consider the use of Tubifast® or other tubular bandages as extra support for very agitated patients or for those where the dressing comes off prematurely: the dressing is designed with the intention of being gentle to the skin.

Pressure injury prevention re-application guide



1. Gently pull handling tabs to release dressing from skin.



2. Continue to release the dressing from the skin using the handling tabs until the skin is exposed for skin check.



3. While maintaining the dressing position at the proximal edge of 'A' (see picture), perform assessment of the skin.



4. Re-apply the foam and border of the dressing. Make sure the flaps with the tabs are placed over the ankle flaps.



5. Confirm dressing is replaced to its original position, making sure the border is intact and flat.



6. Press and smooth the dressing to ensure the entire dressing is in contact with the skin.

7. Re-apply non-skid sock if using, especially for ambulatory patients. If the patient is mobile and walking around, we would recommend appropriate non-slip footwear to reduce risk of falls.

Mepilex Border Heel Ordering Information[†]

Product Code	Size	Pcs/box
282750	22 x 23 cm	6

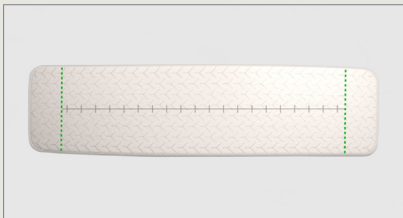
[†] Packaged sterile in single packs.

Mepilex® Border Post-Op Application guide

Before



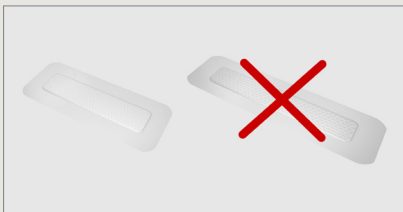
Start by cleansing the wound in accordance with normal procedures and make sure the surrounding skin is completely dry before application.



Select an appropriate dressing size according to the incision by making sure that the wound pad will overlap the wound by at least 1–2 cm.



Open the sterile packaging and remove the dressing.



Don't stretch the dressing while applying and avoid wrinkles.

Body area

Hip



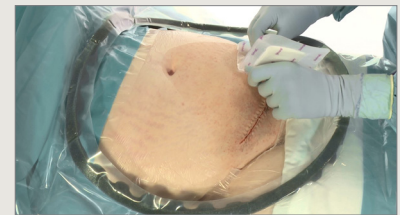
1. Remove the middle part of the release film and apply the dressing on the right position.

Knee



1. Remove the middle part of the release film and apply the dressing on the right position.

C-section



1. Remove the middle part of the release film and apply the dressing on the right position.

Cardiac (Chest + Leg)



1. Remove the middle part of the release film and apply the dressing on the right position.



1. Before removing the release film; cut the border on the side (without the purple line) without cutting into the wound pad.

Application steps



2. Remove the larger of the remaining films continuously while applying the dressing. Repeat for the smaller film and reposition if needed.



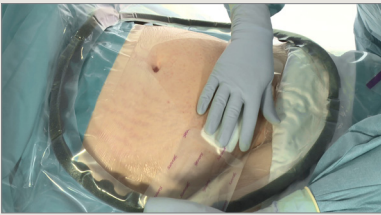
3. Finalise the application by smoothing the full dressing area for maximal adherence.



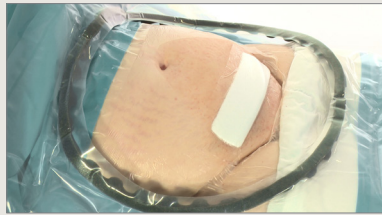
2. Remove the larger of the remaining films continuously while applying the dressing. Repeat for the smaller film and reposition if needed.



3. Finalise the application by smoothing the full dressing area for maximal adherence.



2. Remove the larger of the remaining films continuously while applying the dressing. Repeat for the smaller film and reposition if needed.



3. Finalise the application by smoothing the full dressing area for maximal adherence.



2. Remove the larger of the remaining films continuously while applying the dressing. Repeat for the smaller film and reposition if needed.



3. Finalise the application by smoothing the full dressing area for maximal adherence.



2. Remove the middle part of the release film and apply the cut dressing on the right position. Then remove the larger of the remaining films continuously while applying the dressing. Repeat for the smaller film and reposition if needed.



3. Apply the second dressing without cutting it and make sure the wound pad edges overlap slightly.



4. Finalise the application by smoothing the full dressing areas for maximal adherence.

After

The dressing can now be left in place for up to seven days. Inspect the dressing and surrounding skin daily.

Leave the dressing on unless there are no clinical reasons to change.

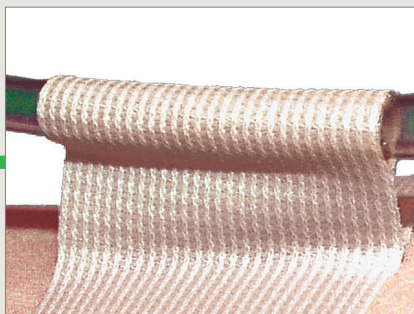
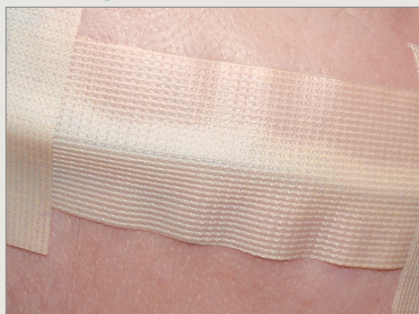
Change the dressing:

- If surgical exudate leaks from the dressing or out into the borders.
- When the absorbent pad is fully saturated (3 out of 4 corners).
- At any sign of an infection.

Mepilex® Border Post-Op
ordering information page 37

Mepitac® Application techniques

Tubing



Tubing - tape over

Used for short-term applications.

- Place Mepitac over tubing, adhesive side down, without creating pressure under the tubing.
- Press Mepitac against tubing.

Tubing - lift

Used to reduce potential pressure under tubing.

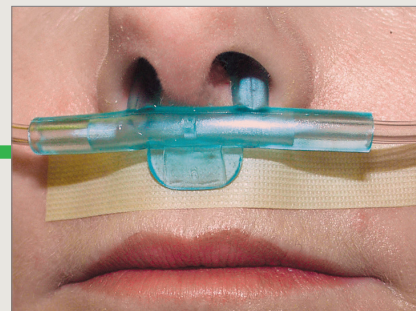
- Centre Mepitac over tubing: encircle tubing with Mepitac.
- Where Mepitac meets, pinch the two adhesive sides together. Secure remainder of Mepitac to skin.

Tubing - V-shape

Used for tube secural.

- Centre Mepitac, adhesive side up, under tubing.
- Cross one section of Mepitac over tubing and secure to skin.
- Repeat with other side of tape.

Other applications



Children

Mepitac is suitable for patients with fragile skin, such as children. Note that the adhesion of Mepitac may decrease when used in humid condition such as incubators or on patients who have a fever or perspire a lot.

Fixation of dressings

Use Mepitac as extra fixation of wound dressings.

Skin protection

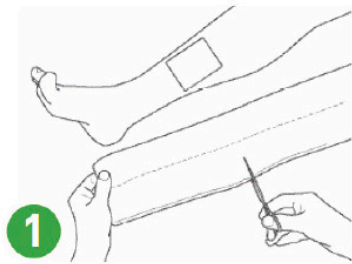
Use Mepitac as skin protection under devices, such as connectors.

Mepitac Ordering Information[‡]

Product Code	Size	Pcs/box
298300	2 x 300 cm	1
298400	4 x 150 cm	1

[‡]Packaged sterile in single packs.

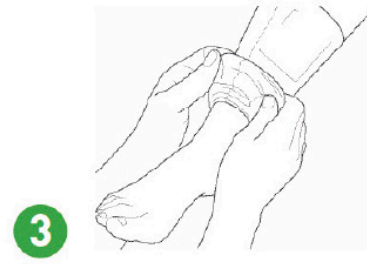
Tubifast® WITH 2-WAY STRETCH™ TECHNOLOGY Application techniques



1 Tubifast 2-Way Stretch is a lightweight conforming stockinette which can be used for dressing retention in dermatological areas or as an undercast stockinette. To apply Tubifast 2-Way Stretch, all that is needed is a pair of scissors and a pair of hands. Simply cut off the required length.

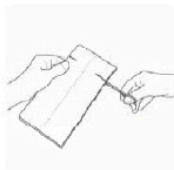


2 Stretch the piece of Tubifast 2-Way Stretch over the hands and over the affected limb, if securing a dressing. If full limb coverage is required, the Tubifast 2-Way Stretch is simply pulled or rolled on as a stocking.



3 The Tubifast 2-Way Stretch covers the dressing and gives it a light, even, non-constricting pressure. It may be applied in a double layer, especially over joints for extra security, or the edges may be tucked under. Whichever method is used, Tubifast 2-Way Stretch is quick, easy and comfortable – it will stay in place and is non-constricting.

Hand application



1 Measure from the metacarpals to just beyond the wrist, double and cut. Cut 2 holes about 5cm from the fold.

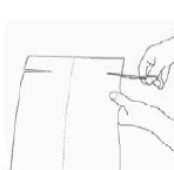


2 Pull Tubifast 2-Way Stretch onto hand and wrist, with the thumb and little finger coming through the holes provided.



3 The remaining bandage is folded over, the middle three fingers coming through the remaining hole. The bandage and dressing are now secure.

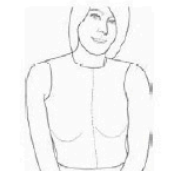
Vest application



1 Take a piece of body size Tubifast 2-Way Stretch and measure from top of shoulder to waist. Cut holes about 10cm down, and 4-5cm in at either side.



2 Pull the Tubifast 2-Way Stretch over the head, with the arms coming through the holes provided.



3 The Tubifast 2-Way Stretch is pulled into position to provide a vest. This application is ideal to hold dressings on the breast or back, and for dermatological use.

Vest with sleeve



1 The body size is applied, as in the previous application, and a piece of arm-size Tubifast 2-Way Stretch is rolled onto the arm.



2 A cut is made underneath and on top of the arm, to provide two tails in the arm piece. Holes are made in the back and front of the vest, to secure the tails.



3 The tails are passed through the holes in the body-size Tubifast 2-Way Stretch and tied, to make an ideal sleeved vest for dermatology or undercast stockinette use.

Hip bandage



1 Measure a piece of trunk-size Tubifast 2-Way Stretch from waist to thigh and cut a hole approx. 15cm down.



2 Pass the Tubifast 2-Way Stretch over the affected leg and pass the other leg through the cut hole.



3 The Tubifast 2-Way Stretch will now hold a dressing securely in position on the hip region.

Head application



1 Measure from neck to top of head and double. Take a little extra (2-4cm) and cut. Fold into 2 equal halves and make a hole 5-6cm up, 2-3cm in.

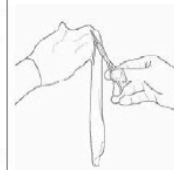


2 Pull over head, the face coming through the hole. Make a complete twist in the remaining bandage and repeat with second layer.

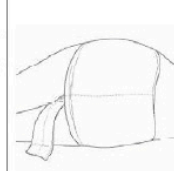


3 The head bandage is now completed and the dressing held securely in position.

Perineum dressing



1 Measure from waist to mid-thigh and cut a hole halfway through the Tubifast 2-Way Stretch approx. 15cm up.



2 The Tubifast 2-Way Stretch is pulled up, both legs coming through the hole, with the remaining tail at the back.



3 The tail is brought between the legs, and holes are made in the body piece. The two ends of the tail pieces are passed through the holes and tied, securing the perineal dressing in place.

Tubifast 2-Way Stretch

Tubifast 2-Way Stretch is the world's first and only lightweight elasticated tubular bandage with radial and longitudinal stretch[†]. This unique mode of action allows patients complete freedom of movement, with added comfort. Ideal for dressing retention and skin covering for any part of the body. It can also be used for patch wrapping and as an under-cast stockinette. Tubifast 2-Way Stretch holds dressings securely in place without the need for tapes, pins or ties. It is quick and easy to use, with less risk of fraying[‡] than traditional tubular bandages. Because of its tubular construction, Tubifast 2-Way Stretch is particularly suitable for holding dressings in place on difficult areas such as stumps of amputee patients. If you are concerned about your condition, or your condition worsens, discontinue use and consult your healthcare professional.

Tubifast 2-way Stretch Ordering Information[†]

Product Code	Line	Product	Limb size	Width*
2434	RED	Small Limbs	9-18cm	3.5cm
2436	GREEN	Small and medium limbs	14-24cm	5cm
2438	BLUE	Large limbs	24-40cm	7.5cm
2440	YELLOW	Extra-large limbs, heads, children's trunks	35-64cm	10.75cm
2444	PURPLE	Large adult trunks	64-130cm	20cm

[‡] Packaged in single packs; non-sterile

* Length for all Tubifast 2-way stretch is 10 m.

Tubigrip® Application techniques

Wrist



1 Take a piece of the correct size Tubigrip and measure from 5cm below the elbow to the head of the metacarpals, double and add 2-3cm.



2 Make small cuts about 4cm at either side of the fold, to accept the thumb, ensuring that the elastics are not cut through.

3

Taking the shortest piece first, pull onto the arm, the thumb coming through the 1st cut in the bandage.



4

Take the remaining bandage and fold over the hand, the thumb coming through the 2nd hole. Pull bandage into position, ensuring it is not tucked under.



Elbow



1 Measure approx. a hand's breadth at either side of the joint and double, adding 2-3cm.



2 Apply the bandage, cut edge uppermost and double over, taking the second layer 2-3cm further than the 1st layer.

Knee



1 Measure approx. a hand's breadth at either side of the joint and double, adding 2-3cm.



2 Apply the bandage, cut edge uppermost and double over, taking the second layer 2-3cm further than the 1st layer.

Ankle



1 Measure from the widest point of the calf to the base of toes, double and add 2-3cm.



2 Apply, ensuring that the 2nd layer is higher than the 1st. An applicator may be useful if the joint is painful.

Padded joint



1 Measure as for knee application but times 3. Apply 1st layer of Tubigrip, then a layer of gauze or wool strips on top of it.



2 The Tubigrip is taken over the wool and another layer of wool is added, finishing with the 3rd layer of Tubigrip.

Chest



1 Take a double layer of Tubigrip measured from axilla to waist. It can be run up the arms and lifted over the head.



2 Alternatively, the Tubigrip can be stepped into, the cut edges uppermost.

Arm fixation



1 Using in conjunction with Collar 'n' Cuff, measure the Tubigrip from axilla to waist and waist to shoulder. The patient can step into the Tubigrip which is pulled up to the axilla.



2 The 2nd layer is drawn over the affected arm and onto the shoulder. A cut can be made so the hand can be observed.

SHAPED SUPPORT BANDAGE (TSSB)



ARM
For full arm applications, a shaped support bandage is ideal. A small cut is made 4-5cm from the bottom to accommodate the thumb.



LEG
For full leg applications, a long shaped support bandage can be used. This gives a graduated pressure, ensuring an adequate venous return.



BELOW KNEE
For ease of application, shaped Tubigrip can be quickly and easily pulled into place.



SELECTING SIZE
Place the guide around the widest part of the area to be covered and slot the tape into the buckle. Read the size of Tubigrip required (cm for shaped), to obtain the correct tension.



CUTTING
If the shaped Tubigrip is too long, fold in half and cut equal amounts from top and bottom.



APPLYING
Pull the lower part of the bandage into the upper part and apply as a stocking, lower part first and then pulling up the upper part.

Tubigrip and Tubigrip Shaped Support Bandage (TSSB)

Tubigrip provides tissue support in the treatment of strains and sprains, soft tissue injuries, joint effusions, general oedema, post-burn scarring and ribcage injuries and is also used for pressure dressings and arm fixation. TSSB is a support bandage used to aid venous and lymphatic return in the management of venous disorders of the legs and arms. TSSB may also be used as an undercast stockinette in cast bracing, for support following cast removal and to provide pressure therapy in the treatment of post-burn scarring. If you are concerned about your condition, or your condition worsens, discontinue use and consult your healthcare professional.

Tubigrip Ordering Information†

Product Code	Assortment	Natural 10m	Beige 10m
A	Infant legs and arms	1435	-
B	Small wrists	1436	1449
C	Medium wrists, Small elbows	1443	1450
D	Large wrists, Medium elbows, Small/Medium ankles, Medium knees	1437	1451
E	Large elbows, Medium/Large ankles, Medium knees	1434	1448
F	Large knees, Small thighs	1438	1452
G	X-Large knees, Medium thighs	1439	1453
J	Large thighs, Small trunks	1440	-
K	Small/Medium trunks	1441	-
L	Large trunk	1442	-
M	X-Large trunk	1444	-

TSSB Ordering Information†

Product Code	Assortment	Size
1472	Small B/C	32-36 cm
1473	Medium C/D	35-39 cm
1474	Large D/E	38-42 cm
1475	Small	32-36 cm
1476	Medium	35-39 cm
1477	Large	38-42 cm
1478	X-Large	41-45 cm
1471	X-Large Extra Thigh	41-45 cm

† Individually packed in cartons of 10. The below-knee style is also suitable for use on the arms.

References

Page 7: 1. Davies P, Rippon M. Evidence review: the clinical benefits of Safetac® technology in wound care. *Journal of Wound Care*. 2008; Supplement:3-31. 2. Santamaria N, Gerdtz M, Liu W et al. Clinical effectiveness of a silicone foam dressing for the prevention of heel pressure ulcers in critically ill patients: Border II Trial. *Journal of Wound Care*. 2015;24(8):340-345. 3. Santamaria N, Santamaria H. An estimate of the potential budget impact of using prophylactic dressings to prevent hospital-acquired PUs in Australia. *Journal of Wound Care*. 2014;23(11):583-589.

Page 8-13: 1. Price P et al. Findings of an International Pain Survey. *International Wound Journal* 2008 2. World Union of Wound Healing Societies. Principles of best practice: Minimising pain at wound dressing-related procedures. A consensus document. London: MEP Ltd. 2004. 3. Upton D, Solowiej K. Pain and stress as contributors to delayed wound healing. *Wound Practice and Research*. 2010; 18(3):114-122. 4. White R. Evidence for atraumatic soft silicone wound dressing use. *Wounds UK*. 2005;1(3):104-109. 5. Dykes PJ, Heggie R, Hill SA. Effect of adhesive dressings on the stratum corneum of the skin. *Journal of Wound Care*. 2001;10(2):7-10. 6. Meaume S, Van de Looverbosch D, Heyman H et al. A study to compare a new self-adherent soft silicone dressing with a self-adherent polymer dressing in stage II pressure ulcers. *Ostomy Wound Management*. 2003;49(9):44-52. 7. White R. A Multinational survey of the assessment of pain when removing dressings. *Wounds UK*. 2008;4(1):14-22. 8. Upton D, Solowiej K. The Impact of Atraumatic Vs Conventional Dressings on Pain and Stress. *Journal of Wound Care*. 2012;21(5):209-215.

Page 17: 1. Mölnlycke Health Care. Mepilex Border Flex - Fluid handling capacity. Report no. PD-527642. Data on file. 2. Mölnlycke Health Care. Mepilex Border Flex - Estimation of spreading area using dot pattern on backing film. Report no. PD-528872. Data on file. 3. Nelson Laboratories (Salt Lake City, UT, USA). Viral penetration ASTM Methods F 1671. Report no. 322509. Data on file. 4. Mölnlycke Health Care. Wet penetration. Report no. 2002-0423-001. Data on file. 5. Mölnlycke Health Care. Tests of Mepilex Lite laminate. Report no. 20071123-004. Data on file. 6. Nelson Laboratories (Salt Lake City, UT, USA). Viral penetration ASTM Methods F 1671. Report no. 413098. Data on file. 7. Mölnlycke Health Care. Mepilex Border Flex - Waterproofness. Report no. PD-532095. Data on file. 8. Mölnlycke Health Care. Mepilex Border Flex - Absorption and dispersion tests on inclined plane, viscous test solution. Report no. PD-528871. Data on file. 9. Mölnlycke Health Care. Mepilex Border Flex - Bacteria encapsulation. Report no. PD-537072. Data on file. 10. ALTEN. Comparison of Mepilex Border Flex dressing and Mepilex Border dressing in wet condition. Report no. PD-530246. 18 January 2017. Data on file. 11. ProDerm. Assessment of wearing properties of wound dressings on the knees. Report no. PD-535012. 22 August 2016. Data on file. 12. ProDerm. Assessment of wearing properties of wound dressings on the elbows. Report no. PD-535013. 22 August 2016. Data on file. 13. Mölnlycke Health Care. Mepilex Border Flex - Spreading layer spreads fluid evenly across the surface. Report no. PD-528874. Data on file. 14. White R. A Multinational survey of the assessment of pain when removing dressings. *Wounds UK*. 2008;4(1):14-22. 15. Woo KY, Coutts PM, Price P et al. A randomised crossover investigation of pain at dressing change comparing 2 foam dressings. *Advances in Skin and Wound Care*. 2009;22(7):304-310. 16. Meaume S, Van de Looverbosch D, Heyman H et al. A study to compare a new self-adherent soft silicone dressing with a self-adherent polymer dressing in stage II pressure ulcers. *Ostomy Wound Management*. 2003;49(9):44-52. 17. Rippon M, Davies P, White R. Taking the trauma out of wound care: the importance of undisturbed healing. *Journal of Wound Care*. 2012;21(8):359-368. 18. Mölnlycke Health Care. Mepilex Border Flex - Conformability Report no. PD-528870. Data on file. 19. Mepilex Border Flex Instructions for Use. Data on file.

Page 18: 1. Post-Marketing Surveillance Reports Mepilex Border. 2. Internal laboratory tests, filed in Laboratory Dep MHC. 3. External test Lab report id ALC.H.69438:0603 AMTAC Laboratories Ltd, Cheshire, UK, filed in Laboratory Dep MHC. 4. Internal laboratory tests, filed in Laboratory Dep MHC. 5. External Test, Lab Report no. 322509 (Nelson Laboratories), filed in Laboratory Dep MHC. 6. Statement towards ASTM F 1671 (viral penetration test), PD-4040335. 7. Mölnlycke Health Care. Tensile force. Lab report 201303 01-002. Data on file. 8. Upton D, Solowiej K. The Impact of Atraumatic Vs Conventional Dressings on Pain and Stress. *Journal of Wound Care*. 2012;21(5):209-215. 9. White R. Evidence for atraumatic soft silicone wound dressing use. *Wounds UK*. 2005;1(3):104-109. 10. Wiberg AB, Feili F, Asp A, Daun EK. Preventing maceration with a soft silicone dressing: in-vitro evaluations. Poster presented at the 3rd Congress of the WUWHs, Toronto, Canada. 2008. 11. Mölnlycke Health Care. Fluid handling capacity. SMTL lab report SMTL 13/4161/1. Data on file. 12. White R. A Multinational survey of the assessment of pain when removing dressings. *Wounds UK*. 2008;4(1):14-22.

Page 19: 1. Upton D, Solowiej K. The Impact of Atraumatic Vs Conventional Dressings on Pain and Stress. *Journal of Wound Care*. 2012;21(5):209-215. 2. White R. Evidence for atraumatic soft silicone wound dressing use. *Wounds UK*. 2005;1(3):104-109. 3. Wiberg AB, Feili F, Asp A, Daun EK. Preventing maceration with a soft silicone dressing: in-vitro evaluations. Poster presented at the 3rd Congress of the WUWHs, Toronto, Canada. 2008. 4. Post-Marketing Surveillance Reports Mepilex Border. 5. Internal laboratory tests, filed in Laboratory Dep MHC. 6. External test Lab report id ALC.H.69438:0603 AMTAC Laboratories Ltd, Cheshire, UK, filed in Laboratory Dep MHC. 7. Internal laboratory tests, filed in Laboratory Dep MHC. 8. External Test, Lab Report no. 322509 (Nelson Laboratories), filed in Laboratory Dep MHC. 9. Statement towards ASTM F 1671 (viral penetration test), PD-4040335. 10. Feili F, Nobelius A, Asp A et al. Retention capacity. Poster presentation at the EWMA Conference, Lisbon, Portugal. 14-16 May 2008.

Page 20: 1. Post-Marketing Surveillance Reports Mepilex Border. 2. Internal laboratory tests, filed in Laboratory Dep MHC. 3. External test Lab report id ALC.H.69438:0603 AMTAC Laboratories Ltd, Cheshire, UK, filed in Laboratory Dep MHC. 4. Internal laboratory tests, filed in Laboratory Dep MHC. 5. External Test, Lab Report no. 322509 (Nelson Laboratories), filed in Laboratory Dep MHC. 6. Statement towards ASTM F 1671 (viral penetration test), PD-4040335.

Page 21: 1. Post-Marketing Surveillance Reports Mepilex Border. 2. Internal laboratory tests, filed in Laboratory Dep MHC. 3. External test Lab report id ALC.H.69438:0603 AMTAC Laboratories Ltd, Cheshire, UK, filed in Laboratory Dep MHC. 4. Internal laboratory tests, filed in Laboratory Dep MHC. 5. External Test, Lab Report no. 322509 (Nelson Laboratories), filed in Laboratory Dep MHC. 6. Statement towards ASTM F 1671 (viral penetration test), PD-4040335. 7. Cox J. Predictors of Pressure Ulcers in Adult Critical Care Patients. *American Journal of Critical Care*. 2001;20(5):364-375. 8. Primiano M, Friend M, McClure C et al. Pressure Ulcer Prevalence and Risk Factors During Prolonged Surgical Procedures. *AORN Journal*. 2011; 94(6):555-566. 9. Whittington KT, Briones R. National Prevalence and Incidence Study: 6-Year Sequential Acute Care Data. *Advances in Skin & Wound Care*. 2004;17(9):490-494. 10. Nguyen KH, Chaboyer W, Whitty J. Pressure injury in Australian public hospitals: a cost-of-illness study. *Australian Health Review*. 2015;39:329-336.

Page 22: 1. Davies P. User evaluation of interface dressings for pressure ulcer prevention. Mölnlycke Health Care (GMCS-2017-058). 2017. 2. Bill B, Pederson J, Call E et al. Wound dressing shear test method (bench) providing results equivalent to humans. Poster presentation at the 14th Annual EPUAP Conference, Oporto, Portugal. 2011. 3. Black J et al. Consensus statement: Global evidence based practice recommendations for the use of wound dressings to augment pressure ulcer prevention protocols. August 2012. 4. Call E, Pedersen J, Bill B et al. Enhancing pressure ulcers prevention using wound dressings: what are the modes of action? *Int Wound J*. 2015;12(4):408-413; doi: 10.1111/iwj.12123.

Page 23: 1. Black J et al. Consensus statement: Global evidence based practice recommendations for the use of wound dressings to augment pressure ulcer prevention protocols. August 2012. 2. Mölnlycke Health Care. Fluid handling capacity - Mepilex® Border. SMTL lab report SMTL 10/3299/1 100. Data on file. 3. Wiberg AB, Feili F, Asp A, Daun EK. Preventing maceration with a soft silicone dressing: in-vitro evaluations. Poster presented at the 3rd Congress of the WUWHs, Toronto, Canada. 2008. 4. White R. Evidence for atraumatic soft silicone wound dressing use. *Wounds UK*. 2005;1(3):104-109. 5. White R. A

Multinational survey of the assessment of pain when removing dressings. Wounds UK. 2008;4(1):14-22. 6. Post-Marketing Surveillance Reports Mepilex Border. 7. Internal laboratory tests, filed in Laboratory Dep MHC. 8. External test Lab report id ALC.H.69438:0603 AMTAC Laboratories Ltd, Cheshire, UK, filed in Laboratory Dep MHC.

Page 24: 1. Davies P. User evaluation of interface dressings for pressure ulcer prevention. Mölnlycke Health Care [GMCS-2017-058]. 2017. 2. Black J et al. Consensus statement: Global evidence based practice recommendations for the use of wound dressings to augment pressure ulcer prevention protocols. August 2012. 3. White R. Evidence for atraumatic soft silicone wound dressing use. Wounds UK. 2005;1(3):104-109. 4. Wiberg AB, Feili F, Asp A, Daun EK. Preventing maceration with a soft silicone dressing: in-vitro evaluations. Poster presented at the 3rd Congress of the WUWHS, Toronto, Canada. 2008. 5. White R. A Multinational survey of the assessment of pain when removing dressings. Wounds UK. 2008;4(1):14-22. 6. Dykes PJ, Heggie R, Hill SA. Effect of adhesive dressings on the stratum corneum of the skin. Journal of Wound Care. 2001;10(2):7-10.

Page 25: 1. Post-Marketing Surveillance Reports Mepilex Border. 2. Internal laboratory tests, filed in Laboratory Dep MHC. 3. External test Lab report id ALC.H.69438:0603 AMTAC Laboratories Ltd, Cheshire, UK, filed in Laboratory Dep MHC. 4. Internal laboratory tests, filed in Laboratory Dep MHC. 5. External Test, Lab Report no. 322509 (Nelson Laboratories), filed in Laboratory Dep MHC. 6. Statement towards ASTM F 1671 (viral penetration test), PD-4040335. 7. Upton D, Solowiej K. The Impact of Atraumatic Vs Conventional Dressings on Pain and Stress. Journal of Wound Care. 2012;21(5):209-215. 8. White R. Evidence for atraumatic soft silicone wound dressing use. Wounds UK. 2005;1(3):104-109. 9. Wiberg AB, Feili F, Asp A, Daun EK. Preventing maceration with a soft silicone dressing: in-vitro evaluations. Poster presented at the 3rd Congress of the WUWHS, Toronto, Canada. 2008. 10. White R. A Multinational survey of the assessment of pain when removing dressings. Wounds UK. 2008;4(1):14-22.

Page 27: 1. Waterproofness in accordance to EN 13726-2. Mepilex passes the waterproofness test, see lab report 20090417-002. 2. Mepilex passes the viral test in accordance to ASTM F 1671, performed by Nelson Laboratories US. 3. The statement explains why REF. 17 states "larger than 25nm". 4. Upton D, Solowiej K. The Impact of Atraumatic Vs Conventional Dressings on Pain and Stress. Journal of Wound Care. 2012;21(5):209-215. 5. White R. Evidence for atraumatic soft silicone wound dressing use. Wounds UK. 2005;1(3):104-109. 6. Wiberg AB, Feili F, Asp A, Daun EK. Preventing maceration with a soft silicone dressing: in-vitro evaluations. Poster presented at the 3rd Congress of the WUWHS, Toronto, Canada. 2008. 7. Mölnlycke Health Care. Fluid handling and retention properties - Mepilex XT. Report no. 20130729-001 (SMTL). Data on file. 8. Mölnlycke Health Care. Fluid handling and retention properties with viscous test fluid - Mepilex XT. Report No. 20130515-001/20120815-004/20130104-004. Data on file. 9. Meuleneire F, Fostier A. Local treatment of heel pressure ulcers with a silicone foam dressing. Poster presented at the 3rd Congress of the WUWHS, Toronto, Canada. 2008. 10. Zillmer R, Agren MS, Gottrup F, Karlsmark T. Biophysical effects of repetitive removal of adhesive dressings on peri-ulcer skin. Journal of Wound Care. 2006;15(5):187-191. 11. Gee Kee EL, Kimble RM, Cuttie L et al. Randomized controlled trial of three burns dressings for partial thickness burns in children. Burns. 2015; http://dx.doi.org/10.1016/j.burns.2014.11.005 [Epub ahead of print]. 12. Eager CA. Comparison of two foams through the measurement of healing time, frequency of dressing changes and peri wound status. Poster presentation at the 14th Annual Symposium on Advanced Wound Care and Medical Research Forum on Wound Repair. 2001. 13. Mölnlycke Health Care. Biocompatibility Evaluation. Data on File.

Page 28-29: 1. Waterproofness in accordance to EN 13726-2. Mepilex passes the waterproofness test, see lab report 20090417-002. 2. Mepilex passes the viral test in accordance to ASTM F 1671, performed by Nelson Laboratories US. 3. The statement explains why REF. 17 states "larger than 25nm". 4. Upton D, Solowiej K. The Impact of Atraumatic Vs Conventional Dressings on Pain and Stress. Journal of Wound Care. 2012;21(5):209-215. 5. White R. Evidence for atraumatic soft silicone wound dressing use. Wounds UK. 2005;1(3):104-109. 6. Wiberg AB, Feili F, Asp A, Daun EK. Preventing maceration with a soft silicone dressing: in-vitro evaluations. Poster presented at the 3rd Congress of the WUWHS, Toronto, Canada. 2008.

Page 30: 1. Upton D, Solowiej K. The Impact of Atraumatic Vs Conventional Dressings on Pain and Stress. Journal of Wound Care. 2012;21(5):209-215. 2. White R. Evidence for atraumatic soft silicone wound dressing use. Wounds UK. 2005;1(3):104-109. 3. Wiberg AB, Feili F, Asp A, Daun EK. Preventing maceration with a soft silicone dressing: in-vitro evaluations. Poster presented at the 3rd Congress of the WUWHS, Toronto, Canada. 2008. 4. Internal laboratory tests, filed in Laboratory Dep MHC. 5. External test Lab report AMTAC report id ALC H: 67627:0503, files in Laboratory Dep MHC. 6. Statement towards ASTM F 1671 (viral penetration test), PD-4040335. 7. External Test Lab Report no.254633 (Nelson Laboratories), filed in Laboratory Dep MHC.

Page 31: 1. Internal laboratory tests, filed in Laboratory Dep, MHC. Laboratory report, 20101228-001. 2. Internal laboratory tests, filed in Laboratory Dep, MHC. Laboratory report, 20110120-002. 3. External test Lab reports. Viral proof in accordance to ASTM F 1671, performed by Nelson Laboratories US. Filed in Laboratory Dep MHC a) External lab report id 322509; b) external lab report id 413098.

Page 33-34: 1. Bugmann P.H. et al. A silicone coated nylon dressing reduces healing time in burned paediatric patients in comparison with standard sulfadiazine treatment: a prospective randomized trial. Burns, 1998. 2. Patton P. et al. An open, prospective, randomized pilot investigation evaluating pain with the use of a soft silicone wound contact layer vs. a primary dressing. Journal of Burn Care and Research, 2013. 3. David F. et al. A randomised, controlled, non-inferiority trial comparing the performance of a soft silicone-coated wound contact layer (Mepitel One) with a lipidocolloid wound contact layer (UrgoTul) in the treatment of acute wounds. International Wound Journal, 2017. 4. Collin O. Use of Mepitel One dressing following hand surgery: a case study series. Poster presentation at Wounds UK Conference, United Kingdom, 2009. 5. Mölnlycke lab report 20081210-003. Data on file. 6. Edwards J, et al. Hand burn management: minimizing pain and trauma at dressing change. BJON. 2013; Vol 22, No 20. 7. Adamietz, I. A. et al. Effect of Self-Adhesive, Silicone-Coated Polyamide Net Dressing on Irradiated Human Skin. Radiation Oncology Investigations, 1995. 8. Campanella SD, et al. A randomised controlled pilot study comparing Mepitel and SurfaSoft on paediatric donor sites treated with Recell. Burns. 2011;37(8):1334-42. 9. Gotschall CS, et al. Prospective, randomized study of the efficacy of Mepitel on children with partial-thickness scalds. Journal of Burn Care & Rehabilitation. 1998;19(4):279-283. 10. Rippon M, Davies P, White R, Bosanquet N. Cost implications of using an atraumatic dressing in the treatment of acute wounds. Journal of Wound Care. 2008;17(5):224-227.

Page 35: 1. Upton D, Solowiej K. The Impact of Atraumatic Vs Conventional Dressings on Pain and Stress. Journal of Wound Care. 2012;21(5):209-215. 2. White R. Evidence for atraumatic soft silicone wound dressing use. Wounds UK. 2005;1(3):104-109. 3. Wiberg AB, Feili F, Asp A, Daun EK. Preventing maceration with a soft silicone dressing: in-vitro evaluations. Poster presented at the 3rd Congress of the WUWHS, Toronto, Canada. 2008.

Page 37: 1. Zarghooni K. et al. Effect of a modern dressing compared to standard dressings on outcome after primary hip and knee arthroplasty: a prospective, non-randomised controlled study. E-poster presentation at the EWMA Conference, London, United Kingdom. 2015. 2. Bredow J, Hoffmann K, Hellmich M et al. Randomised clinical trial to evaluate performance of flexible self-adherent absorbent dressing coated with silicone layer after hip, knee or spinal surgery in comparison to standard wound dressing. Poster presentation at the 5th Congress of the WUWHS, Florence, Italy. 2016. 3. Van Overeschelde P, Beele H, Olivecrona C, Smet S. A randomised controlled trial comparing two wound dressings used after elective hip and knee arthroplasty. Poster presentation at the 5th Congress of the WUWHS, Florence, Italy. 2016. 4. Johansson C, Hjalmarsson T, Bergentz M et al. Preventing post-operative blisters following hip and knee arthroplasty. Wounds International. 2012;3(2):1-6. 5. PD-430530, Equivalence Form for Mepilex Border Post-Op. 6. Internal laboratory test, filed at Laboratory Dep MHC. 7. Internal wear test and/or focus group, filed in Laboratory Dep MHC. 8. External test at AMTAC Laboratories (waterproof). Lab Report ALC H:69438:0603. 9. External test at Nelson Laboratories (viral penetration test), Lab Report 322509 and 413098. 10. Statement towards ASTM F 1671 (viral penetration test), PD-4040335. 11. Feili F, Svensby A, McCarty S. A laboratory evaluation of the fluid retention properties of post-operative absorbent dressings. Poster presentation at the 5th Congress of the WUWHS, Florence, Italy. 2016. 12. Feili, F, Svensby A, McCarty S. Fluid handling properties of post-operative wound dressings. Poster presentation at 5th Congress of the WUWHS, Florence, Italy. 2016. 13. Meaume S, Van de Looerbosch D, Heyman H et al. A study to compare a new self-adherent soft silicone dressing with a self-adherent polymer dressing in stage II pressure ulcers. Ostomy Wound Management.

2003;49(9):44-52. 14. Wiberg AB, Feili F, Asp A, Daun EK. Preventing maceration with a soft silicone dressing: in-vitro evaluations. Poster presented at the 3rd Congress of the WUWHS, Toronto, Canada. 2008. 15. Feili F, Svensby A, McCarty S. Blood absorption capacity of post-operative wound dressings. Poster presentation at the 5th Congress of the WUWHS, Florence, Italy. 2016. 16. Johnstone A, McGown K. Innovations in the reduction of pressure ulceration and pain in critical care. *Wounds UK*. 2013;9(3):76-80.

Page 38 1. Mölnlycke Health Care. Fluid handling capacity. Lab. report 20121101-002. Data on file. 2. Mölnlycke Health Care. Tensile force. Lab. report 20121019-004. Data on file. 3. Johansson C, Hjalmarsson T, Bergentz M et al. An assessment of a self-adherent, soft silicone dressing in post-operative wound care following hip and knee arthroplasty. Poster presentation at the EWMA Conference, Brussels, Belgium. 2011. 4. White R. A Multinational survey of the assessment of pain when removing dressings. *Wounds UK*. 2008;4(1):14-22. 5. White R. Evidence for atraumatic soft silicone wound dressing use. *Wounds UK*. 2005;1(3):104-109. 6. Meaume S, Van de Looverbosch D, Heyman H et al. A study to compare a new self-adherent soft silicone dressing with a self-adherent polymer dressing in stage II pressure ulcers. *Ostomy Wound Management*. 2003;49(9):44-52. 7. Feili F, Nobelius A, Asp A et al. Retention capacity. Poster presentation at the EWMA Conference, Lisbon, Portugal. 14-16 May 2008. 8. Wiberg AB, Feili F, Asp A, Daun EK. Preventing maceration with a soft silicone dressing: in-vitro evaluations. Poster presented at the 3rd Congress of the WUWHS, Toronto, Canada. 2008. 9. Waring P, Biefeldt S, Matzold KP, Butcher M. An evaluation of the skin stripping of wound dressing adhesives. *Journal of Wound Care*. 2011;20(9):412-422. 10. Dykes PJ, Heggie R, Hill SA. Effect of adhesive dressings on the stratum corneum of the skin. *Journal of Wound Care*. 2001;10(2):7-10. 11. PD-430530, Equivalence Form for Mepilex Border Post-Op. 12. Internal laboratory test, filed at Laboratory Dep MHC. 13. Internal wear test and/or focus group, filed in Laboratory Dep MHC. 14. External test at AMTAC Laboratories [waterproof]. Lab Report ALC H:69438:0603. 15. External test at Nelson Laboratories (viral penetration test), Lab Report 322509 and 413098. 16. Statement towards ASTM F 1671 (viral penetration test), PD-404335.

Page 40: 1. Mölnlycke Health Care. Lab. report 20140806-001. Data on file. 2. Chadwick P, McCardle J. Exudate management using a gelling fibre dressing. *The Diabetic Foot Journal*. 2015;18(1):43-48. 3. Exufiber instructions for use. Data on file.

Page 45: 1. pd-295850: Material list and equivalence. 2. Internal Laboratory report 20071210-004 Waterproofness, in accordance to EN 13726-3:2003. 3. External test Lab report id ALC.H:69438:0603. Tested according to Drug Tariff no 47:1994, AMTAC Laboratory, UK. Filed in Laboratory Dep MHC. 4. Clinical studies Mepilex Border Ag, b). Huss F, Thorfinn J, An open, non-controlled, post-marketing investigation evaluating the experience of using a self-adherent antimicrobial soft silicone, silver containing, foam dressing, Mepilex Border Ag, in second degree burns. MxB Ag, 2011. Data and final report filed by Clinical Research, MHC. 5. External test Lab report id 322509. Viral proof in accordance to ASTM F 1671, performed by Nelson Laboratories US. Filed in Laboratory Dep MHC. 6. Internal laboratory report 20071123-004: Resistance to Wet Bacterial Penetration in accordance to ISO 22610:2006. 7. Statement towards ASTM F 1671 (viral penetration test), PD-404335. 8. White R. A Multinational survey of the assessment of pain when removing dressings. *Wounds UK*. 2008;4(1):14-22. 9. Dykes PJ, Heggie R, Hill SA. Effect of adhesive dressings on the stratum corneum of the skin. *Journal of Wound Care*. 2001;10(2):7-10. 10. Wiberg AB, Feili F, Asp A, Daun EK. Preventing maceration with a soft silicone dressing: in-vitro evaluations. Poster presented at the 3rd Congress of the WUWHS, Toronto, Canada. 2008. 11. External lab report: NAMS A 09C 29253 01/09C 29253 02. Data on file.

Page 46: 1. Antimicrobial effect of Mepilex Border Ag in vitro. Internal laboratory report 20090528-004: Broad range, instant and sustained antimicrobial effect of Mepilex Border Ag, determined by ASTM E2149-01. 2. Antimicrobial effect of Mepilex Border Ag in vitro. Internal laboratory report 20090518-010: Determination of sustained antimicrobial effect of Mepilex Border Ag, batch No. EKDA 012-2-2 (A) against *C. albicans* using test method T-1050 rev.2. 3. Antimicrobial effect of Mepilex Border Ag in vitro. Internal laboratory report 20090601-018: Determination of sustained antimicrobial effect of Mepilex Border Ag, batch No. EKDA 012-2-2 (A) against *P. aeruginosa* and *S. aureus* using test method T-1050 rev.3, (8 days). 4. Antimicrobial effect of Mepilex Border Ag in vitro. External laboratory reports: number: 10C_39972_01, 10C_40239_01, and 10C_40240_01 Broad range and sustained effect with ISO 20743:2007) of Mepilex Border Ag, performed by NAMS A. Filed in Laboratory Dep MHC Lab report 20100924-001. 5. Internal laboratory report 20090512-001: Silver release of Mepilex Border Ag in a two compartment model.

Page 47: 1. Internal laboratory tests, filed in Laboratory Dep MHC. 2. External test. Lab Report no.322509 (and 254633), Nelson Laboratories, filed in Laboratory Dep MHC. 3. Statement towards ASTM F 1671 (viral penetration test), PD-404335. 4. External test, MHC document PD-109553. NAMS A, Study no: 05C48747_01. Instant kill. 5. External test, MHC document PD-109561. Sahlgrenska University Hospital, Clinical bacteriology. Sustained antimicrobial effect up to 8 days in CZ01. 6. External test, MHC document PD-196336. NAMS A, Study no:06_C6085_02 and 06_C60858_02. Sustained antimicrobial effect up to 8 days in ASTM-E2149-01. 7. Taherinejad F, Hamberg K. Antimicrobial effect of a silver-containing foam dressing on a broad range of common wound pathogens. Poster presentation at the 3rd Congress of the WUWHS, Toronto, Canada. 2008. 8. Upton D, Solowiej K. The Impact of Atraumatic Vs Conventional Dressings on Pain and Stress. *Journal of Wound Care*. 2012;21(5):209-215. 9. White R. Evidence for atraumatic soft silicone wound dressing use. *Wounds UK*. 2005;1(3):104-109. 10. Wiberg AB, Feili F, Asp A, Daun EK. Preventing maceration with a soft silicone dressing: in-vitro evaluations. Poster presented at the 3rd Congress of the WUWHS, Toronto, Canada. 2008.

Page 49: 1. External lab report, NAMS A. Data on file. 2. Upton D, Solowiej K. The Impact of Atraumatic Vs Conventional Dressings on Pain and Stress. *Journal of Wound Care*. 2012;21(5):209-215. 3. White R. Evidence for atraumatic soft silicone wound dressing use. *Wounds UK*. 2005;1(3):104-109. 4. External lab report, NAMS A. Data on file.

Page 50: 1. Lab report. Data on file. 2. Summary Report P779R rev.2, Appendix 7, Wickham Laboratories Report P501R, Zone of Inhibitions and Lab Report 20080616-006.

Page 51: 1. Mölnlycke Health Care. Laboratory Report PD-520425. Data on file. 2. Mölnlycke Health Care. Laboratory Report PD-521245. Data on file. 3. Mölnlycke Health Care. Laboratory Report 20160104-002. Data on file. 4. Mölnlycke Health Care. Laboratory Report PD-521232. Data on file. 5. Exufiber Ag+ Instructions for use. Data on file. 6. Mölnlycke Health Care. Laboratory Report PD-521248. Data on file. 7. Mölnlycke Health Care. Laboratory Report 20160818-001. Data on file.

Page 54 : 1. Tickle J, Fletcher J. Mextra Superabsorbent made easy. *Wounds UK*. 2012;8(4):1-4. 2. Mölnlycke Health Care. Laboratory report no: PD-522474. Data on file. 2016. 3. Wiegand, C, Hipler UC. In vitro evaluation of MMP binding capacity of a superabsorbent dressing and the reduction of collagenase activity. Poster presentation at the EWMA conference, Copenhagen, Denmark. 2013. 4. Eming S, Smola H, Hartmann B et al. The inhibition of matrix metalloproteinase activity in chronic wounds by a polyacrylate superabsorber. *Biomaterials*. 2008;29(19): 2932-2940. 5. Mölnlycke Health Care. Survey report no: PD-522187. Data on file. 2016.

Page 56: 1. Waterproofness test acc. to SS-EN - Mepitel Film is Waterproof. 2. Sealing effect test - Mepitel Film is waterproof. 3. Wet bacterial penetration test - Mepilex Border passes the wet bacterial penetration test. 4. Viral penetration test acc. to ASTM F 1671 - Mepilex Border passes the viral penetration test. 5. Statement towards ASTM 1671 (viral penetration test), PR-404335. 6. Upton D, Solowiej K. The Impact of Atraumatic Vs Conventional Dressings on Pain and Stress. *Journal of Wound Care*. 2012;21(5):209-215. 7. White R. Evidence for atraumatic soft silicone wound dressing use. *Wounds UK*. 2005;1(3):104-109. 8. Wiberg AB, Feili F, Asp A, Daun EK. Preventing maceration with a soft silicone dressing: in-vitro evaluations. Poster presented at the 3rd Congress of the WUWHS, Toronto, Canada. 2008.

Page 57: 1. Laboratory report no. 20020812-001. Resistance to wet bacterial penetration, T-10055. Laboratory method: DO/LAB/ME049. 2. Water impermeability - done by component supplier for every batch.

Page 60: 1. Nelson laboratories report no. 254633.

- Page 61:** 1. Nelson laboratories report no. 254633. 2. Water impermeability - done by component supplier for every batch.
- Page 63:** 1. Fibre Survey carried out on behalf of Mölnlycke Health Care Limited. May 2009. Data on file. 2. Saville BP. *Physical Testing of Textiles*. 1st ed. UK: Woodhead Publishing. 1999.
- Page 64:** 1. Page B. The Benefits of Tubifast Garments in the management of atopic eczema. *British Journal of Nursing*. 2005;14(5):289-292 2. Cork MJ. Complete Emollient Therapy. *The National Association of Fundholding Practices Official Yearbook*. BPC Waterlow, Dunstable. 1995: 159-168.
- Page 67:** 1. Cornwall JV, Dore CJ, Lewis JD. Graduated compression and its relation to venous refilling time. *British Medical Journal*. 1987;295(6606):1087-1090.
- Page 70:** 1. Blair SD, Wright DD, Backhouse CM et al. Sustained Compression and Healing of Chronic Venous Ulcers. *British Medical Journal*. 1988;297(6657):1159-1161 2. Gould DJ, Campbell S, Newton H et al. Setopress vs. Elastocrepe in Chronic Venous Ulceration. *British Journal of Nursing*. 1998;7(2):66-73.
- Page 72:** 1. Report ALC.H:84024:0804, AMTAC laboratories. Filed at Laboratory Department. Also filed as PD-041854. 2. Upton D, Solowiej K. The Impact of Atraumatic Vs Conventional Dressings on Pain and Stress. *Journal of Wound Care*. 2012;21(5):209-215. 3. White R. Evidence for atraumatic soft silicone wound dressing use. *Wounds UK*. 2005;1(3):104-109.
- Page 75:** 1. Upton D, Solowiej K. The Impact of Atraumatic Vs Conventional Dressings on Pain and Stress. *Journal of Wound Care*. 2012;21(5):209-215. 2. White R. Evidence for atraumatic soft silicone wound dressing use. *Wounds UK*. 2005;1(3):104-109. 3. Lab report PD-380470, Measurement of Ultraviolet protection factor (UPF). 4. Mepiform laminate and film are tested against several properties to show it fulfills the demands. 5. Mustoe TA, Cooter, RD, Gold MH et al. International Clinical Recommendations on Scar Management. *Plastic and Reconstructive Surgery*. 2002;110(2):560-571. 6. Maján JI. Evaluation of a self-adherent soft silicone dressing for the treatment of hypertrophic postoperative scars. *Journal of Wound Care*. 2006;15(5):193-196. 7. SWEREA. Determination of UPF. 2009. Data on file.
- Page 77-78:** 1. Farmer, D. Epaderm Cream evaluation questionnaire. Report no. PD-531402 Rev:01. 5 September 2017. Data on file. 2. National Institute for Clinical Excellence. Frequency application of topical corticosteroids for atopic eczema. *Technology Appraisal Guidance, TA81*. 2004 August 2. 3. Cork MJ. Complete Emollient Therapy. *The National Association of Fundholding Practices Official Yearbook*. BPC Waterlow, Dunstable. 1995: 159-168. 4. Fulmer AW, Kramer GJ. Stratum corneum lipid abnormalities in surfactant-induced dry scaly skin. *The Journal of Investigative Dermatology*. 1986;86(5):598-602.
- Page 79-80:** 1. Farmer, D. Epaderm Cream evaluation questionnaire. Report no. PD-531402 Rev:01. 5 September 2017. Data on file. 2. Breternitz M, Kowatzki D, Langenauer, M et al. Placebo-controlled, double-blind, randomized, prospective study of a glycerol-based emollient on eczematous skin in atopic dermatitis: biophysical and clinical evaluation. *Skin Pharmacol Physiol*. 2008;21(1):39-45. 3. Batt MD, Davis WB, Fairhurst E. Changes in the physical properties of the stratum corneum following treatment with glycerol. *Journal of the Society of Cosmetic Chemists*. 1998;39:367-381. 4. Mölnlycke Health Care. Lab. report PD-427625. Data on file. 5. Greive K. Glycerine: the naturally effective humectant. *Dermatological Nursing*. 2012;11(1):30-35. 6. Primary Care Dermatology Society & British Association of Dermatologists. Guidelines for the management of atopic eczema. *Skin*. 2009;39:399-402. 7. Fulmer AW, Kramer GJ. Stratum corneum lipid abnormalities in surfactant-induced dry scaly skin. *The Journal of Investigative Dermatology*. 1986;86(5):598-602. 8. National Institute for Health and Clinical Excellence. Atopic eczema in children: Management of atopic eczema in children from birth up to the age of 12 years. NICE clinical guidelines. 2007.
- Page 82:** 1. Nelson laboratories report no. 254633. 2. Water impermeability - done by component supplier for every batch.
- Page 83:** 1. Internal laboratory tests, filed in Laboratory Dep, MHC. Laboratory report, 20101228-001. 2. Internal laboratory tests, filed in Laboratory Dep, MHC. Laboratory report, 20110120-002. 3. External test Lab reports. Viral proof in accordance to ASTM F 1671, performed by Nelson Laboratories US. Filed in Laboratory Dep MHC a) External lab report id 322509; b) external lab report id 413098.
- Page 85:** 1. Delmore B, Lebovits S, Suggs B et al. Risk factors associated with heel pressure ulcers in hospitalized patients. *J Wound Ostomy Continence Nurs*. 2015;42(3):242-248. 2. Black J. Preventing pressure ulcers occurring on the heel. *Wounds International*. 2013;4(eSupplement):4-7. 3. National Pressure Ulcer Advisory Panel (NPUAP), European Pressure Ulcer Advisory Panel (EPUAP), Pan Pacific Pressure Injury Alliance (PPPIA). Prevention and treatment of pressure ulcers: clinical practice guideline. Haesler, E. (ed). Perth, Australia: Cambridge Media; 2014.
- Page 86:** 1. Waters T, Short M, Lloyd J et al. AORN Ergonomic Tool 2: Positioning and Repositioning the Supine Patient on the OR Bed. *AORN Journal*. Apr 2011;93:445-449. 2. Brennan MR, Laconti D, Gilchrist R. Using conformational positioning to reduce hospital-acquired pressure ulcers. *J Nursing Care Quality*. 2014;29(2):182-187.
- Page 87:** 1. Trevellini C. Connecting the dots: pressure ulcer prevention and safe patient handling. Poster presentation at National Pressure Ulcer Advisory Panel Biennial Conference, Orlando, Florida, United States of America, 2015. 2. Brennan MR, Laconti D, Gilchrist R. Using conformational positioning to reduce hospital-acquired pressure ulcers. *J Nursing Care Quality*. 2014;29(2):182-187. 3. Elling R. Use of a positive air displacement safe patient handling system to reduce facility-acquired pressure ulcers. Poster presentation.

Proving it every day

At Mölnlycke, we deliver innovative solutions for managing wounds, improving surgical safety and efficiency and preventing pressure injuries. Solutions that help achieve better outcomes and are backed by clinical and health-economic evidence.

In everything we do, we are guided by a single purpose: to help healthcare professionals perform at their best. And we are committed to proving it every day.

www.molnlycke.com.au | www.molnlycke.co.nz

The Mölnlycke, Collar 'n' Cuff, Elset, Epaderm, Exufiber, Hydrolock, Lyofoam, Mefix, Melgisorb, Mepiform, Mepilex, Mepitac, Mepitel, Safetac, Mepore, Mesalt, Mesorb, Mextra, Setopress, Tubifast, TwoWay Stretch, Tubigrip, TSSB, Tubinette, Deep Defense, Z-Flo, Tortoise names and logos are registered globally to one or more of the Mölnlycke Health Care Group of Companies. Z-Flex is a registered trademark used by Mölnlycke Health Care. SoftSeam is a trademark used by Mölnlycke Health Care. ©2020 Mölnlycke Health Care. All rights reserved.

Mölnlycke, 12 Narabang Way, Level 4, Belrose, NSW, 2085.
Phone 1800 005 231. www.molnlycke.com.au.

Mölnlycke, PO Box 62-027, Mt Wellington 1641, New Zealand.
Orders & Enquiries 0800 005 231, www.molnlycke.co.nz.

AUWC_0800120_V1. NZ Version. Revised Feb2020.

